

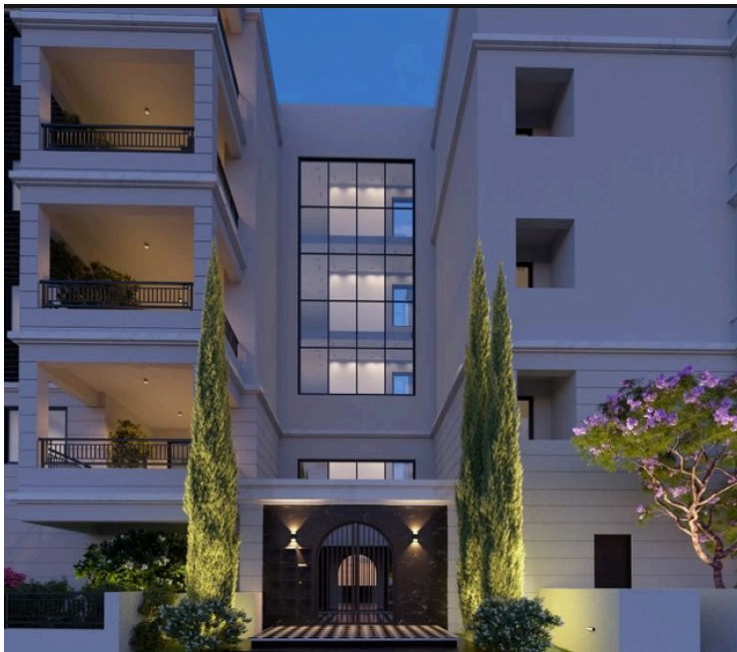
#8178

# New Luxury Penthouses In Petrou & Pavlou Area

 Petrou Kai Pavlou, Limassol

**€450,000** +VAT





# Overview

## Specifications

Bedrooms

 2

Bathrooms

 1

Covered

 84.04 m<sup>2</sup>

Type

**Apartment**

Status

**Off plan**

Toilets

**1**

## Description

Designed with functionality and style in mind, the apartment features an internal space of 84.07 m<sup>2</sup>, providing ample room for relaxing and entertaining. The layout includes two spacious bedrooms one bathroom and one guest w/c.

The home benefits from a central air conditioning system, underfloor heating for cozy winters, and secure entry as part of a gated complex. Residents can also enjoy a well-maintained communal swimming pool, perfect for relaxation.

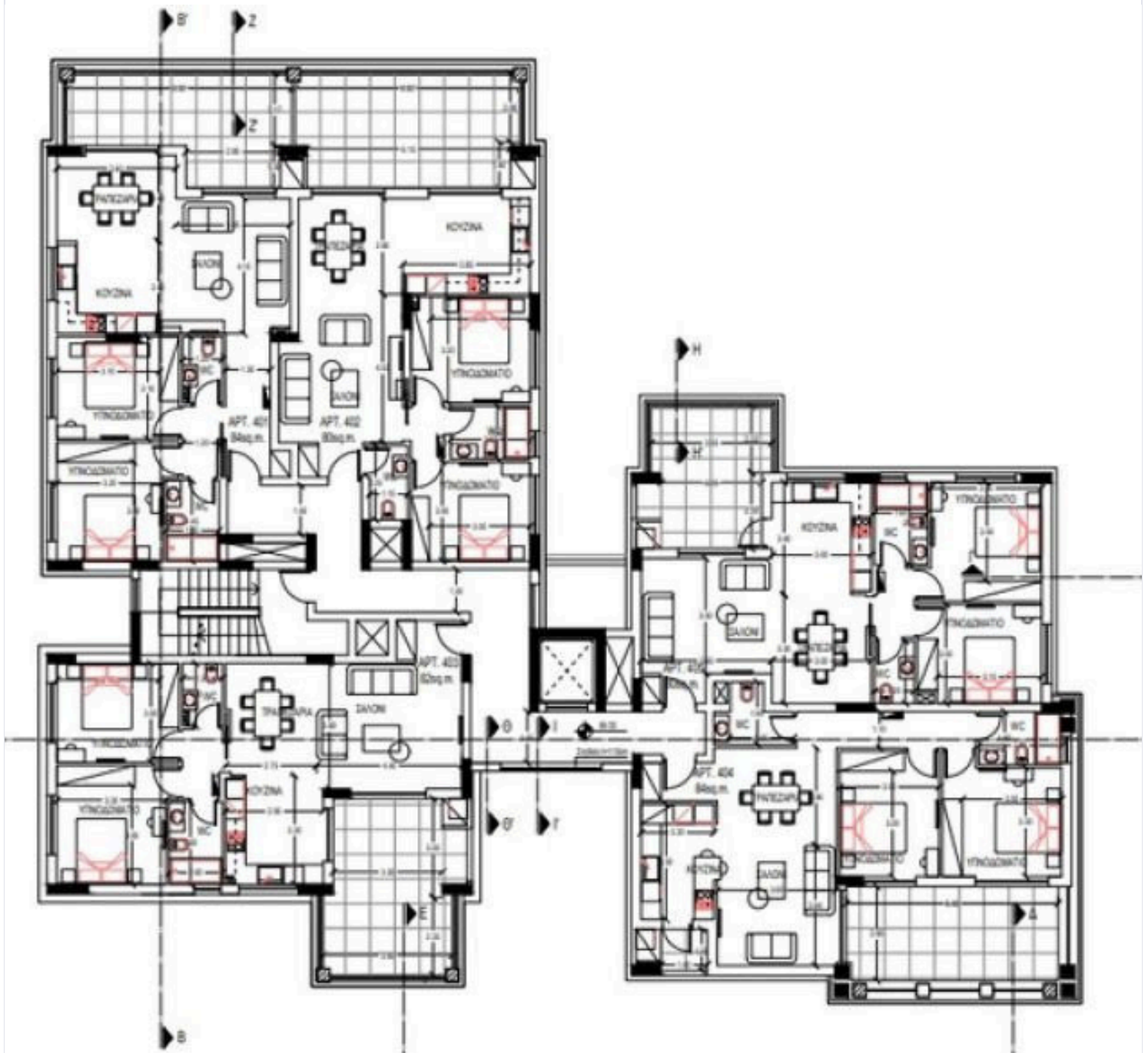
Petrou Kai Pavlou is a vibrant, established area known for its blend of residential comfort and nearby amenities. You'll find supermarkets, shops, schools, cafes, and public transport all within easy reach, making daily life both convenient and enjoyable.

\*Location on map is indicative.





# Floor plans



# Additional information

## Facilities

Aircondition, Central system

Heating, Underfloor

Pool, Communal

Elevator

Landscaped garden

Solar water heater

Gated complex

Parking, Covered

Storage

## Features

Ceramic tiles

Granite countertops

Thermal insulation

Electric car charger (provision)

Pressurized water system

Entrance gate, automated

Smart home automation (provision)

## Contact us



**Katerina Athini**

✉ [katerina@cyprusdomus.com](mailto:katerina@cyprusdomus.com)

