

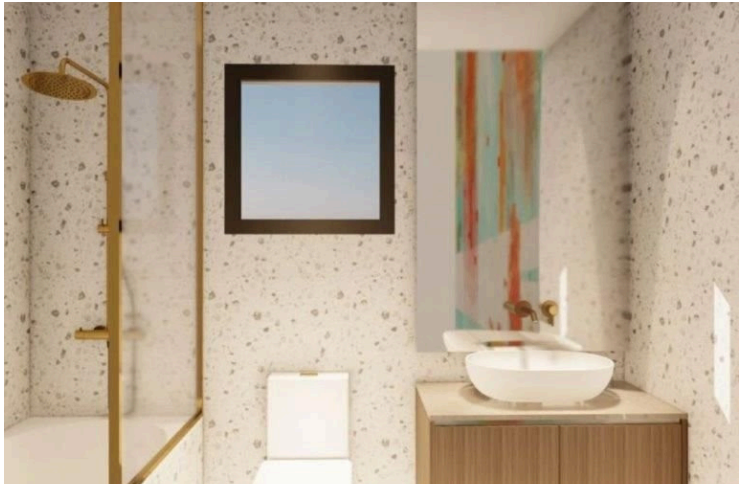
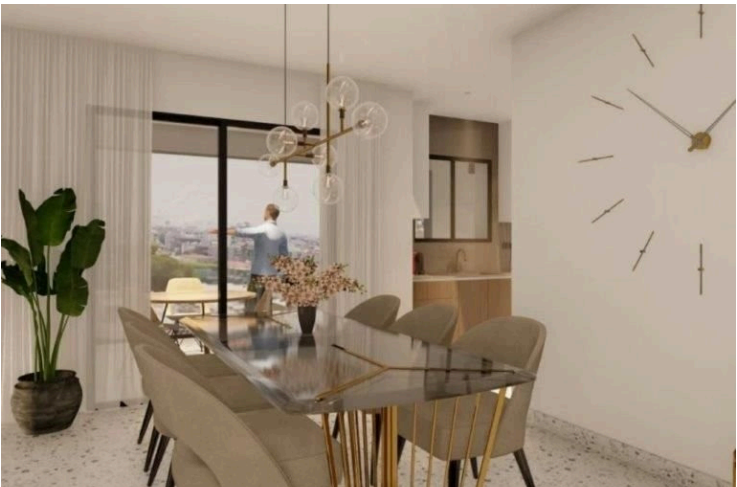
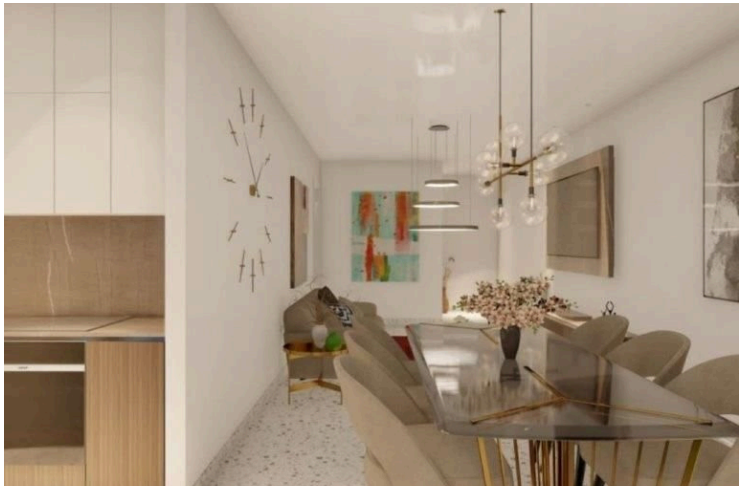
#8200

New Apartment For Sale in Petrou & Pavlou Area

📍 Petrou Kai Pavlou, Limassol

€330,000 +VAT





Overview

Specifications

Bedrooms

 2

Bathrooms

 2

Covered

 77.5 m²

Type

Apartment

Status

Under construction

Energy efficiency rating

 **A**

Description

Modern two-bedroom apartment, with a spacious internal area of 77.5 m². This well-designed home is located on the second floor of a three-story building. It features two comfortable bedrooms and two bathrooms (1 ensuite), making it perfect for small families, couples, or professionals seeking quality living.

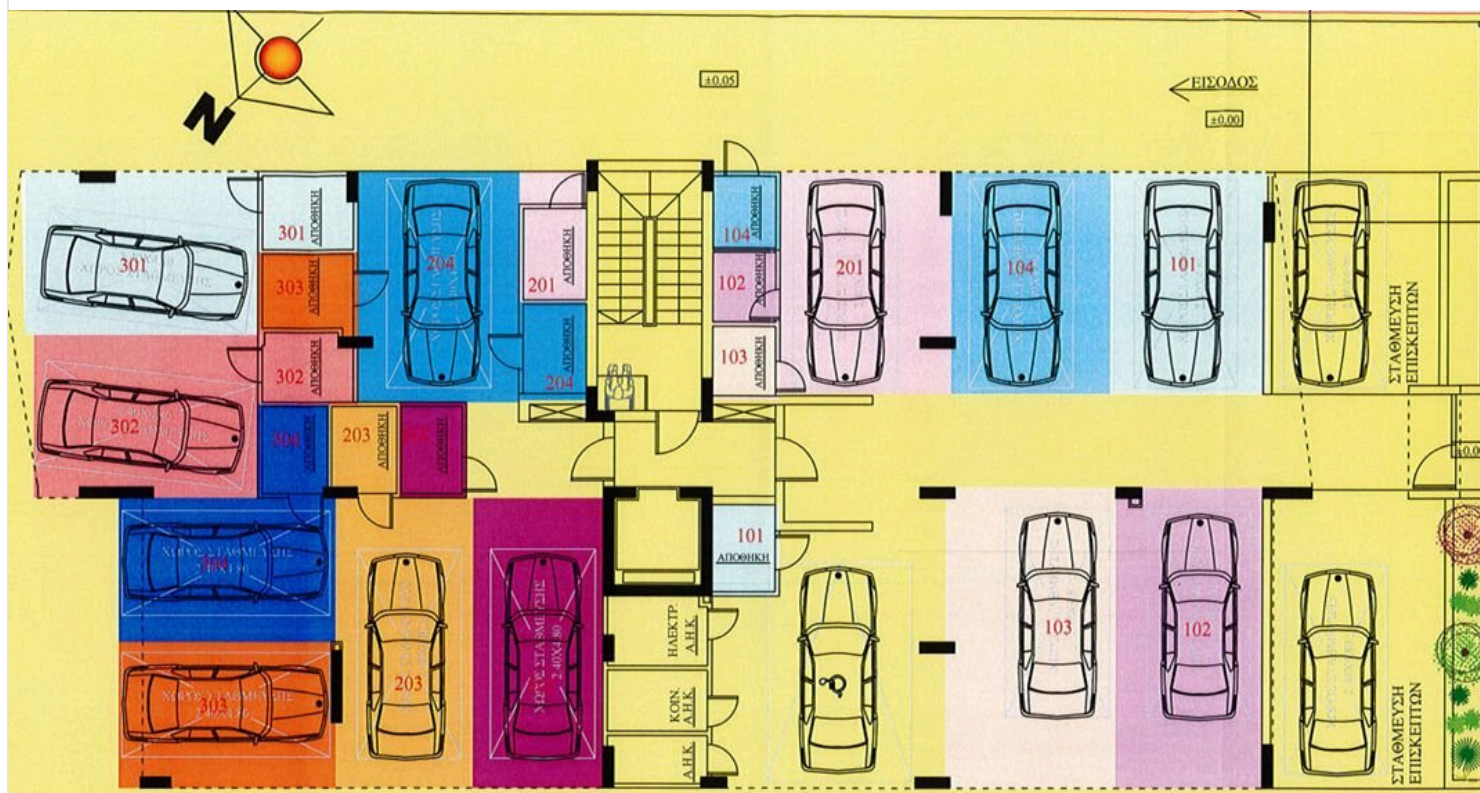
The apartment boasts energy efficiency class A, ensuring low utility costs and a comfortable living environment year-round. Large windows allow for plenty of natural light, and the thoughtful layout provides both style and function.

Situated in Petrou Kai Pavlou, a sought-after residential area known for its peaceful atmosphere and convenient living. The neighborhood offers a blend of quiet streets and easy access to shops, restaurants, schools, and healthcare options. .

*Location on map is indicative.



Floor plans



Additional information

Facilities

Aircondition, Provision

Parking, Covered

Storage

Features

Double glazing

En suite bathroom

Near amenities

Open plan

Contact us



Katerina Athini

✉ katerina@cyprusdomus.com

