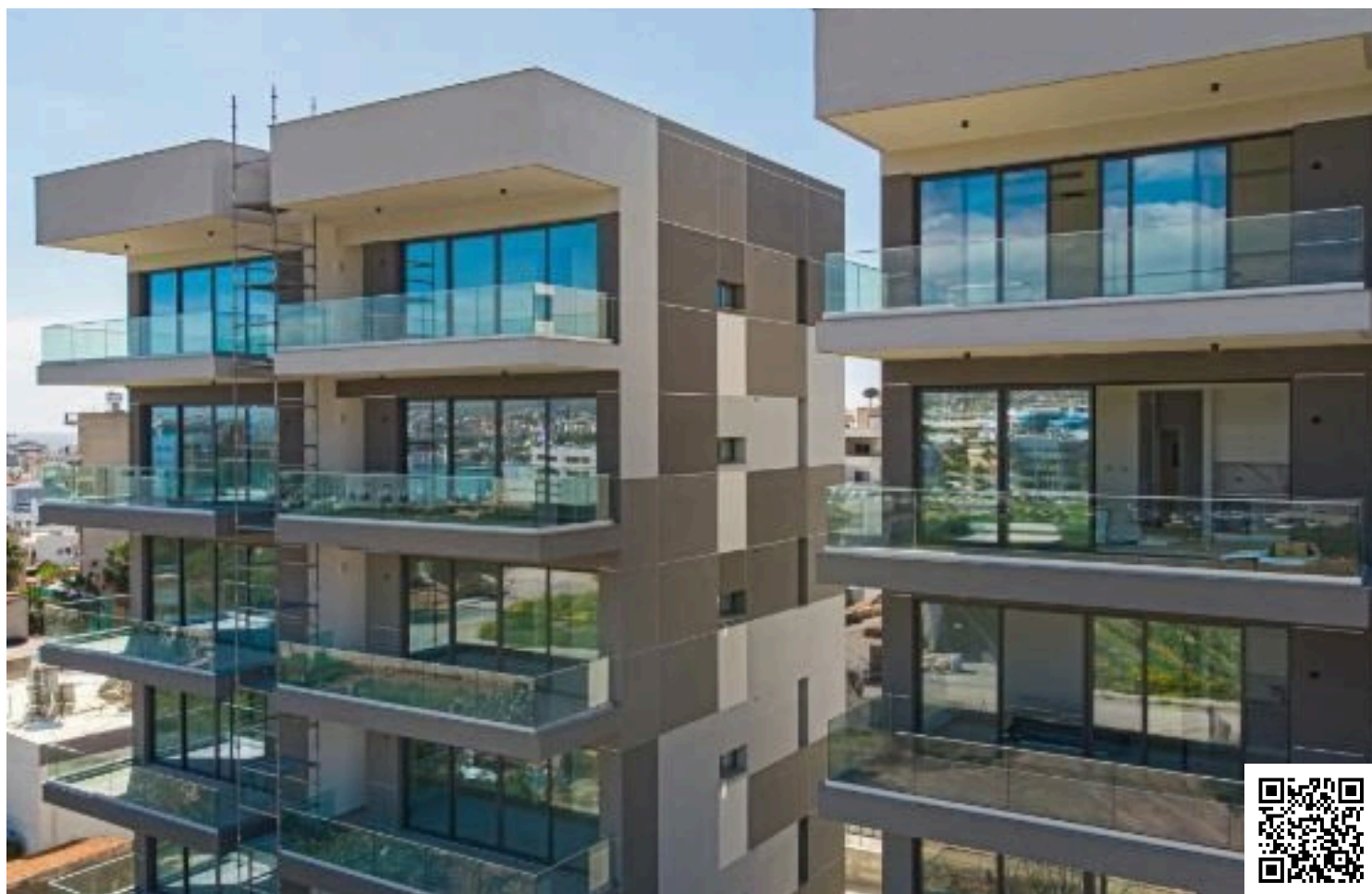


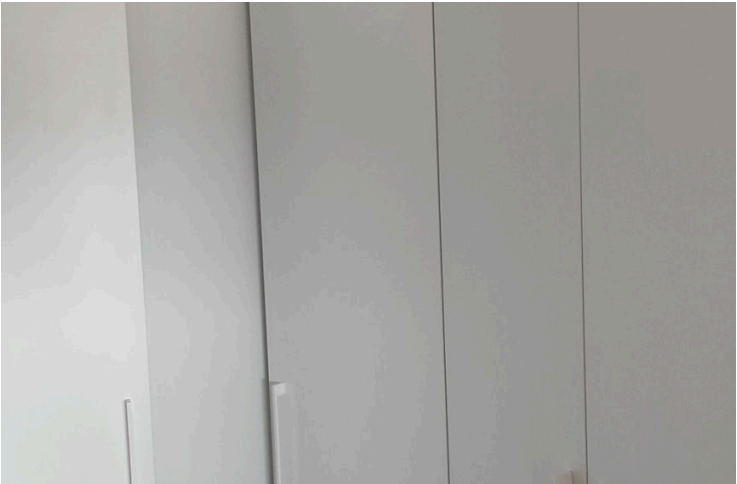
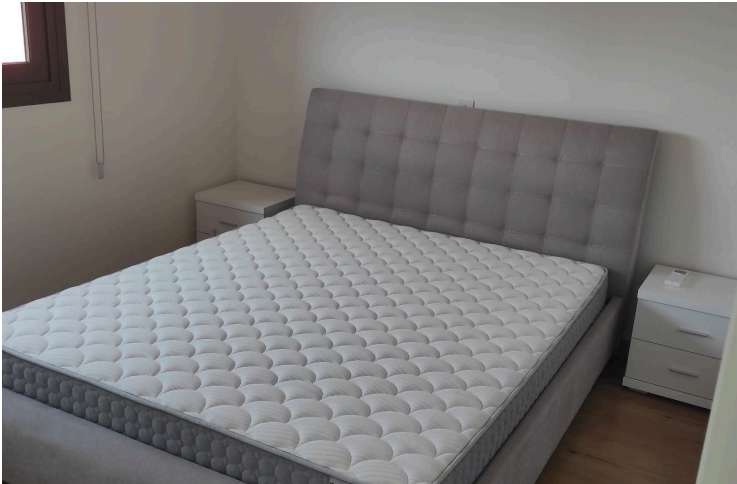
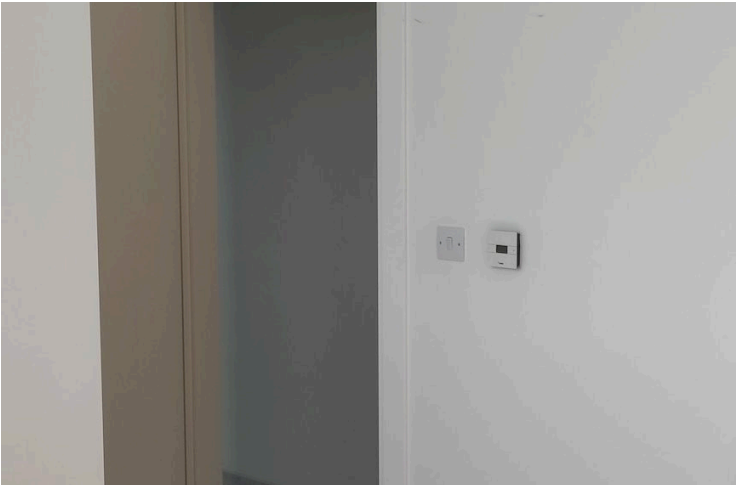
#8205

Modern Sea View Penthouse For Rent in Linopetra

 Linopetra, Limassol

€2,800 /month





Overview

Specifications

Bedrooms

 3

Bathrooms

 2

Covered

 95 m²

Type

Apartment

Toilets

1

Furnished

Fully furnished

Energy efficiency rating

 **B**

Description

Spacious and modern, this 3-bedroom apartment in Linopetra offers comfortable living with an internal space of 95 m². The property is fully furnished throughout, ready for immediate move-in. The open-plan living and dining area is bright and airy, while the kitchen comes complete with quality appliances and ample storage. The master bedroom features an en-suite bathroom.

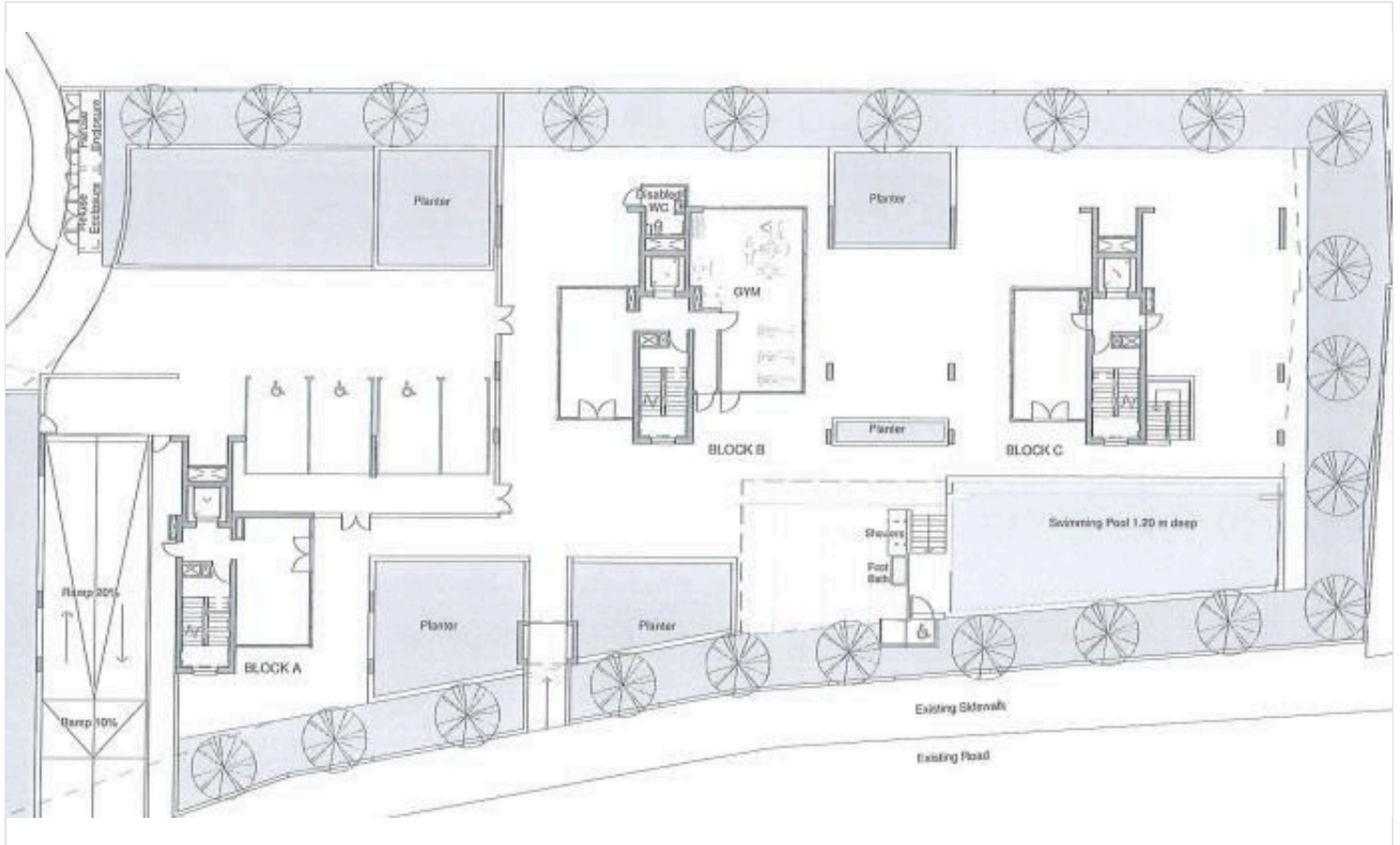
Enjoy year-round comfort with a central AC system and underfloor heating. The building is equipped with an elevator for easy access. Residents can relax and unwind in the communal swimming pool or get active in the onsite gym.

Linopetra is a popular residential area known for its quiet atmosphere and convenient location. It offers a range of local shops, cafes, and supermarkets within walking distance. With excellent access to main roads and public transportation, Linopetra is perfect for professionals and families alike.

*Location on map is indicative.



Floor plans



Additional information

Facilities

Aircondition, Central system

Gym

Pool, Communal

Childrens playground

Heating, Underfloor

Solar water heater

Elevator

Parking, Underground

Features

Double glazing

High ceilings

En suite bathroom

Sound insulation

Entrance gate

Thermal insulation

Contact us



Vassilis Papadopoulos

☎ (+357) 99662023

✉ info@cyprusdomus.com

