

#8218

New Luxury Apartment In Germasogeia Area

 Germasogeia Tourist Area, Limassol

€280,000 +VAT





Overview

Specifications

Bedrooms



Bathrooms



Covered

 **51 m²**

Type

Apartment

Status

Under construction

Description

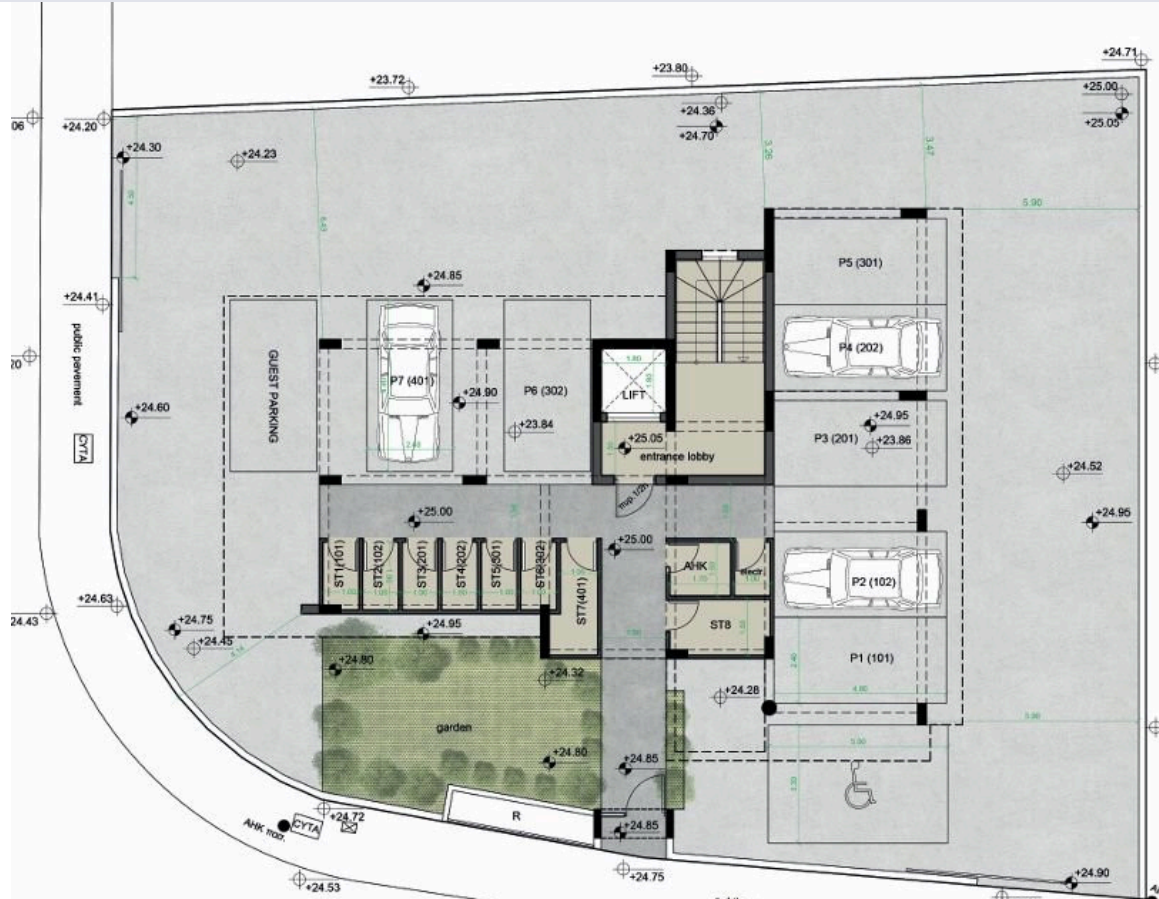
The Project is located in a wonderfully quite area of Germasogeia with a short distance from the sea.

The apartment consists of an open plan kitchen, dining and living area, 1 bedroom and 1 bathroom.

*Location on the map is indicative.



Floor plans



Additional information

Facilities

Parking, Covered

Storage

Contact us



Vassilis Papadopoulos

☎ (+357) 99662023

✉ info@cyprusdomus.com

