

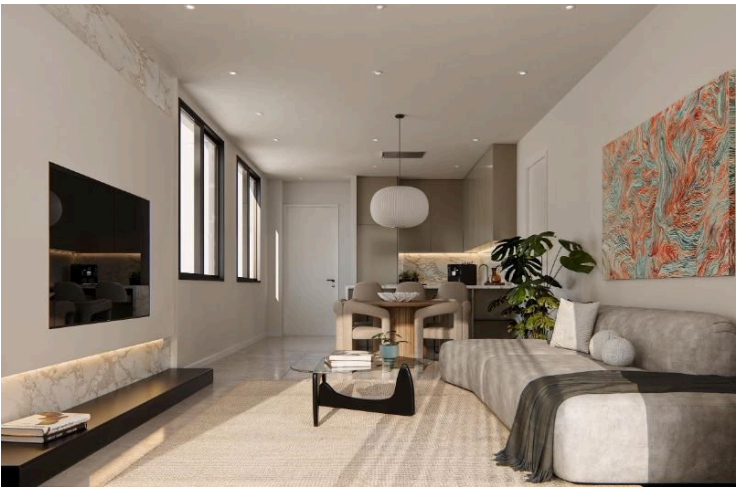
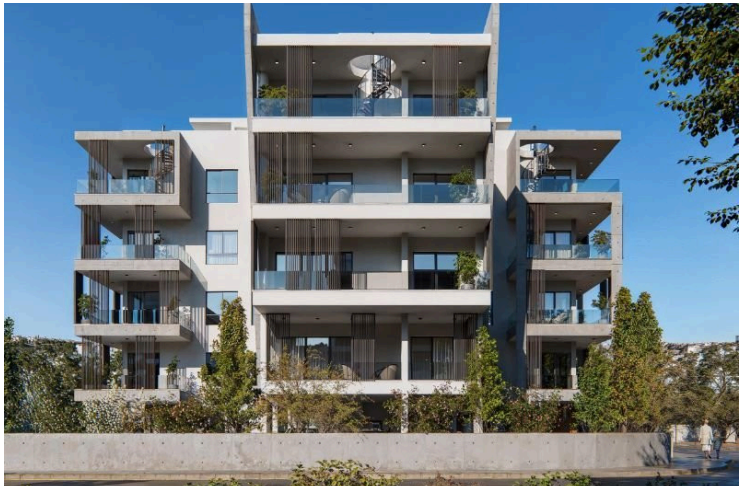
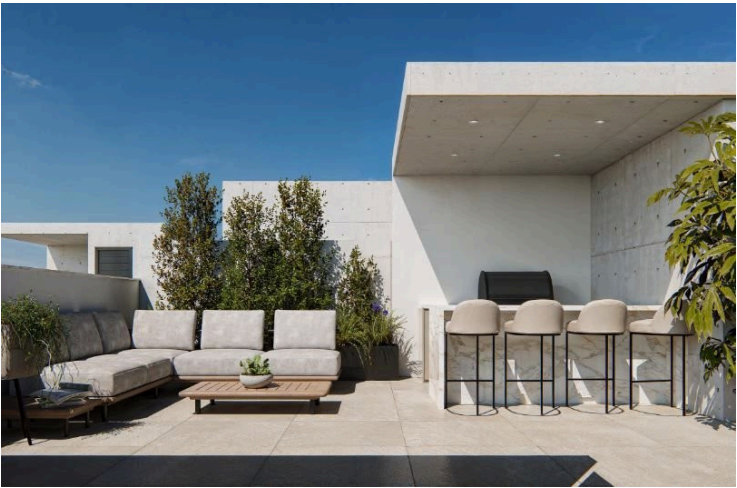
#8235

Spacious Two Bedroom Apartment in Vibrant Germasogeia

📍 Germasogeia, Limassol

€440,000 +VAT





Overview

Specifications

Bedrooms

 2

Bathrooms

 2

Covered

 85.16 m²

Type

Apartment

Status

Off plan

Energy efficiency rating

 **A+**

Description

For sale: Modern off-plan apartment located in the sought-after area of Germ2asogeia. This stylish residence offers 85.16 square meters of internal living space and is situated on the first floor of a four-story building. Designed for comfort and functionality, the apartment features two spacious bedrooms and two elegant bathrooms.

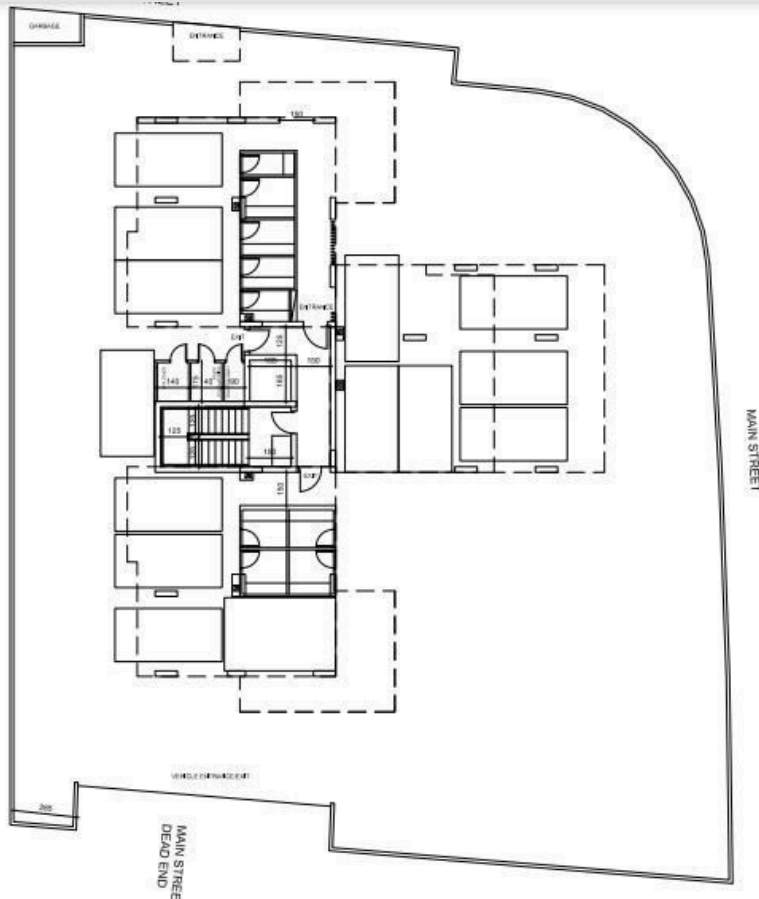
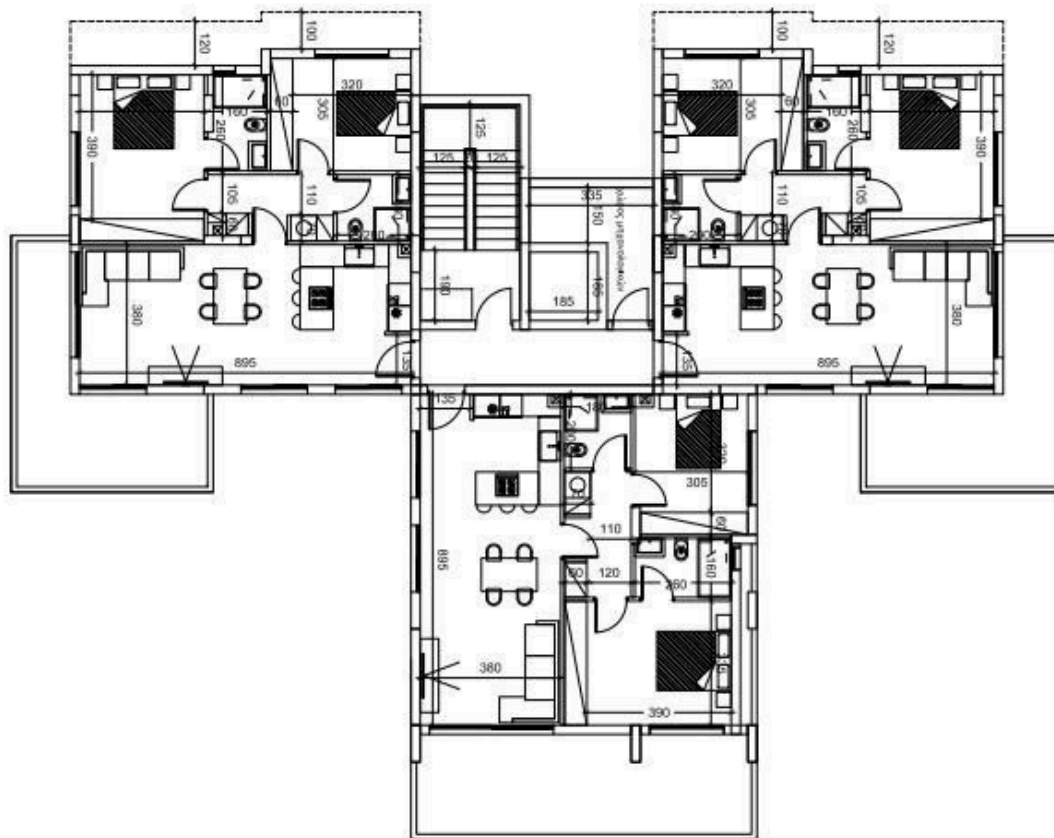
Germasogeia is a vibrant and well-developed area known for its relaxed lifestyle and easy access to urban amenities. Residents enjoy close proximity to the coast, a variety of cafes, restaurants, and shops, as well as parks and recreational facilities. The neighborhood offers a perfect blend of tranquility and convenience, making it an ideal choice for both families and professionals.

The apartment comes with an A+ energy efficiency rating, ensuring low energy consumption and an environmentally friendly living environment. Take advantage of this excellent opportunity to secure a contemporary home in one of the most desirable locations.

*Location on the map is indicative.



Floor plans



Additional information

Facilities

Aircondition, Provision

Childrens playground

Heating, Underfloor

Parking, Covered

Solar photovoltaic panels

Storage

Features

Fire detector

Contact us



Vassilis Papadopoulos

☎ (+357) 99662023

✉ info@cyprusdomus.com

