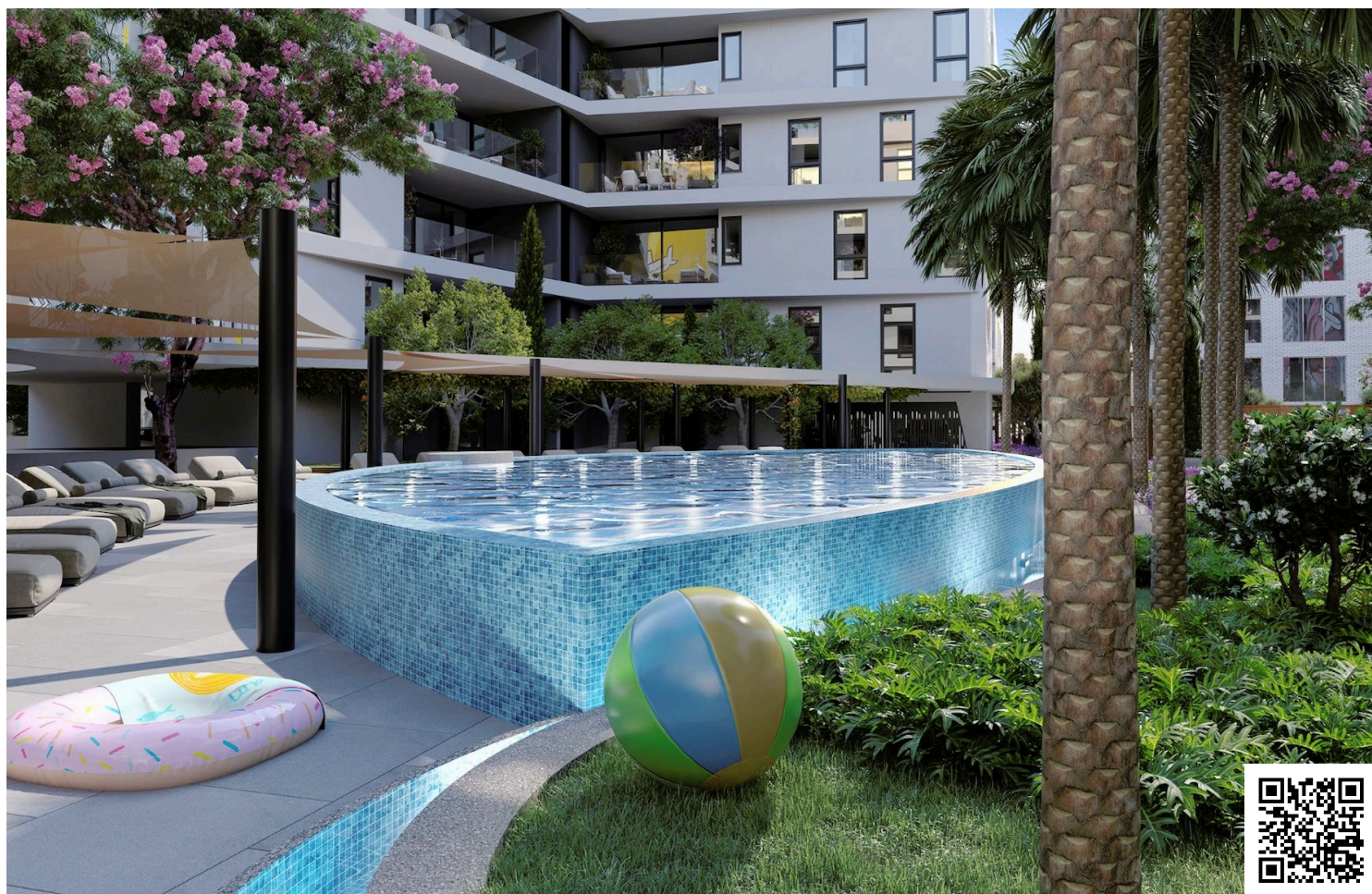


#8250

New Penthouse with common swimming pool in Limassol Centre area

📍 Historical Center, Limassol

€825,000 +VAT





Overview

Specifications

Bedrooms

 2

Bathrooms

 2

Covered

 99 m²

Type

Apartment

Status

Under construction

Toilets

1

Description

This 80 apartment development consists of 4 buildings that surround a beautifully landscaped courtyard. The project offers a unique and exciting environment for prospective residents both on its territory and outside.

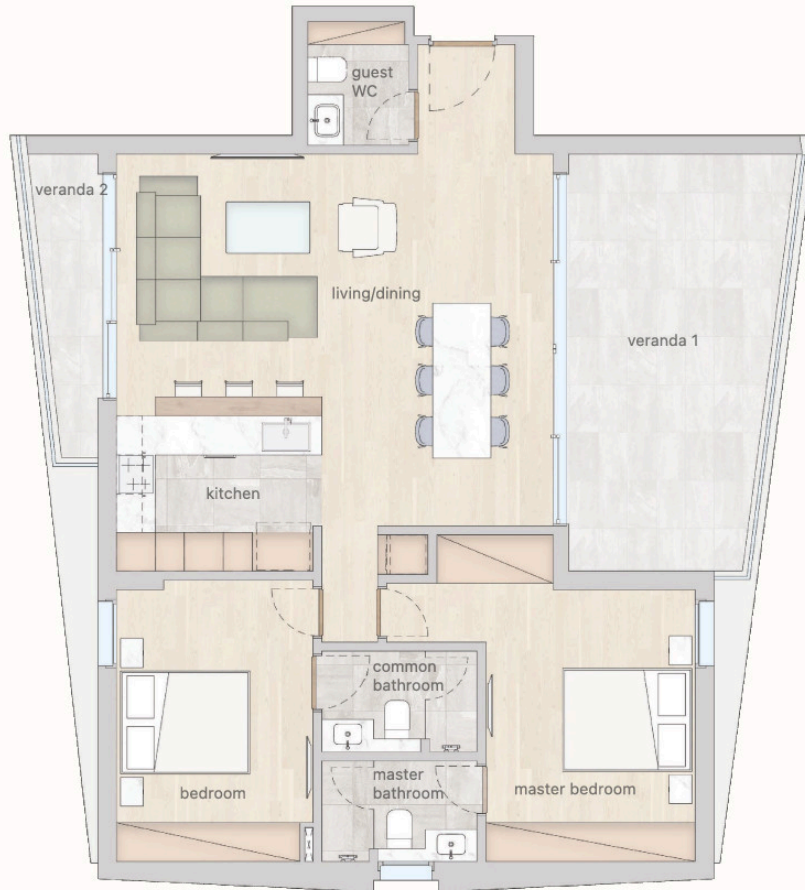
The penthouse consists of an open plan kitchen, dining and living area, 2 bedrooms with en suite bathrooms and 1 guest w/c.

It has 1 covered parking and 1 storage.

*Location on the map is indicative.



Floor plans



One
Bedroom
Apartment



Three
Bedroom
Apartment

Internal Garden View

Two
Bedroom
Apartment



Additional information

Facilities

Childrens playground

Gym

Storage

Clubhouse

Parking, Covered

Gated complex

Pool, Communal

Features

En suite bathroom

Open plan

High ceilings

Near amenities

Contact us



Katerina Athini

 katerina@cyprusdomus.com

