

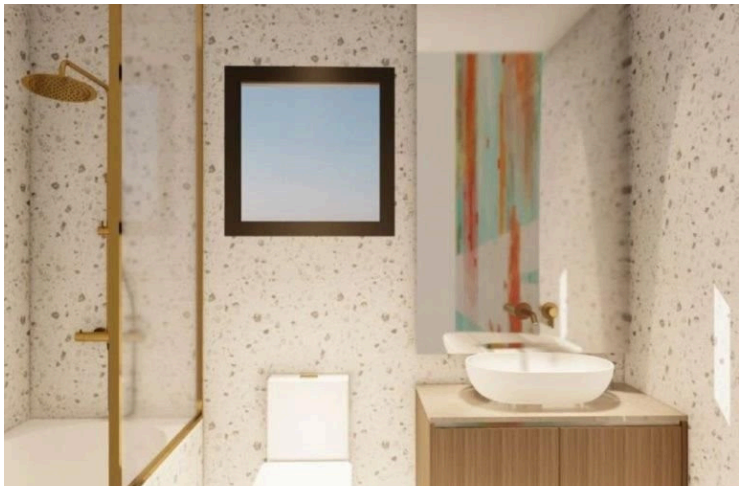
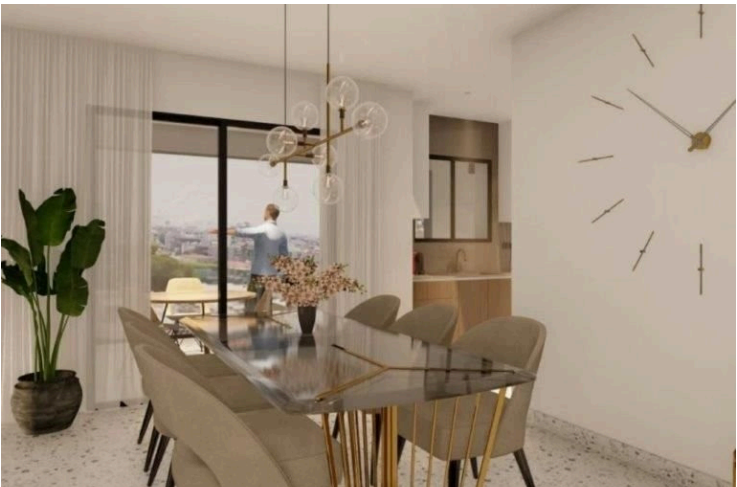
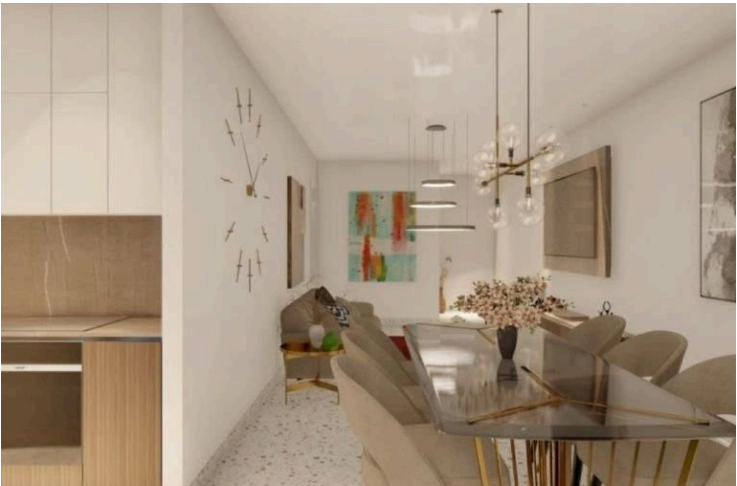
#8372

New Penthouse For Sale in Petrou & Pavlou Area

 Petrou Kai Pavlou, Limassol

€340,000 +VAT





Overview

Specifications

Bedrooms



2

Bathrooms



2

Covered

77.36 m²

Type

Apartment

Status

Under construction

Energy efficiency rating



Description

This penthouse apartment offers 77.36 m² of thoughtfully designed internal space. The property features two spacious bedrooms and two bathrooms (1 en-suite), making it perfect for small families, couples, or professionals looking for comfort and style.

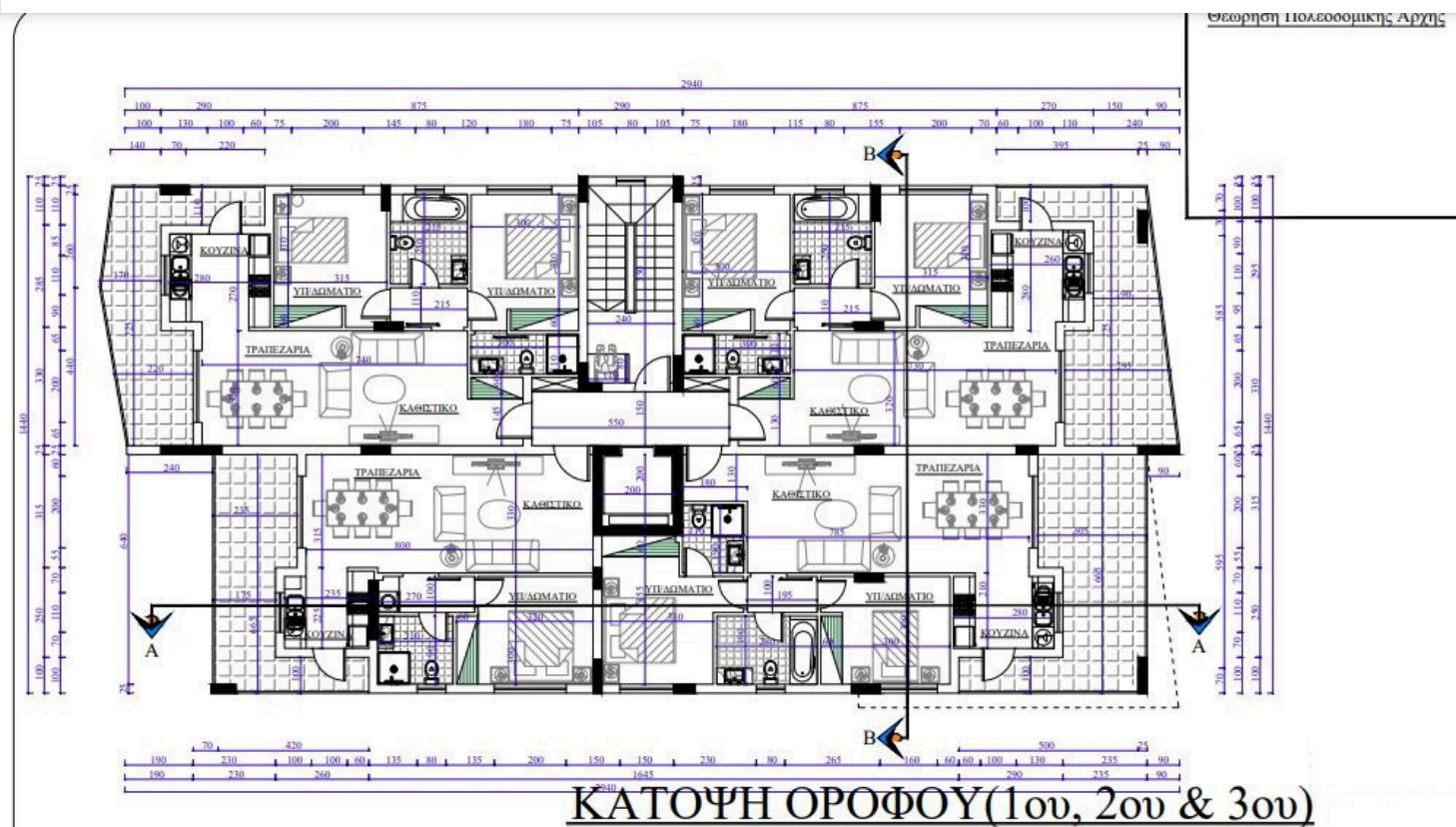
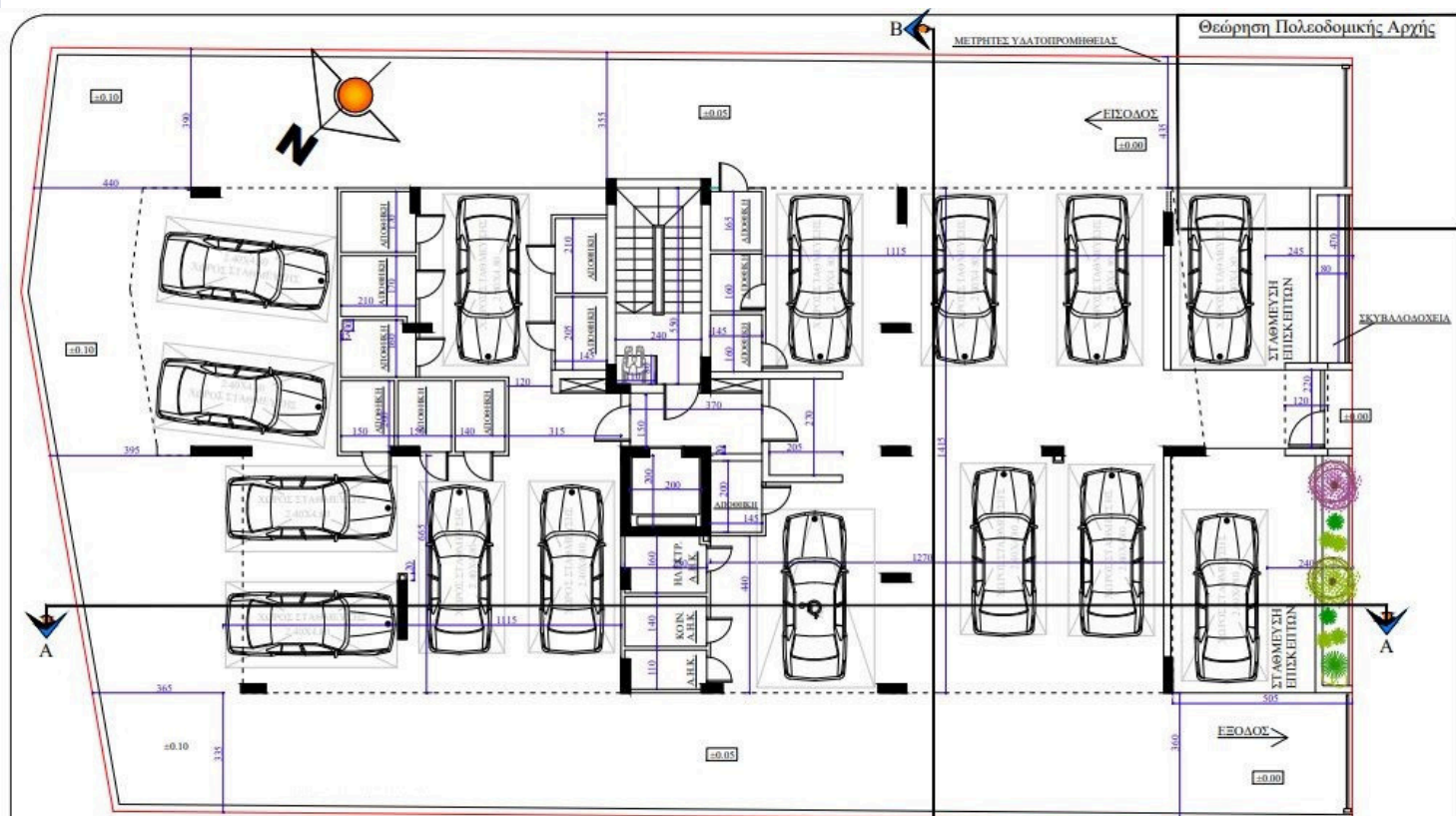
The project is being built with energy efficiency in mind, rated class A, which means lower utility costs and a more eco-friendly home.

Located in the desirable Petrou Kai Pavlou area, the apartment is perfectly positioned close to a variety of amenities including shops, supermarkets, schools, and cafes.

*Location on map is indicative.



Floor plans



Additional information

Facilities

Aircondition, Provision

Parking, Covered

Storage

Features

Double glazing

En suite bathroom

Near amenities

Open plan

Contact us



Katerina Athini

✉ katerina@cyprusdomus.com

