

#8405

New Apartments For sale in Palodia Area

 Palodeia, Limassol

€250,000 +VAT





Overview

Specifications

Bedrooms

 2

Bathrooms

 1

Covered

 76.65 m²

Type

Apartment

Status

Off plan

Toilets

1

Description

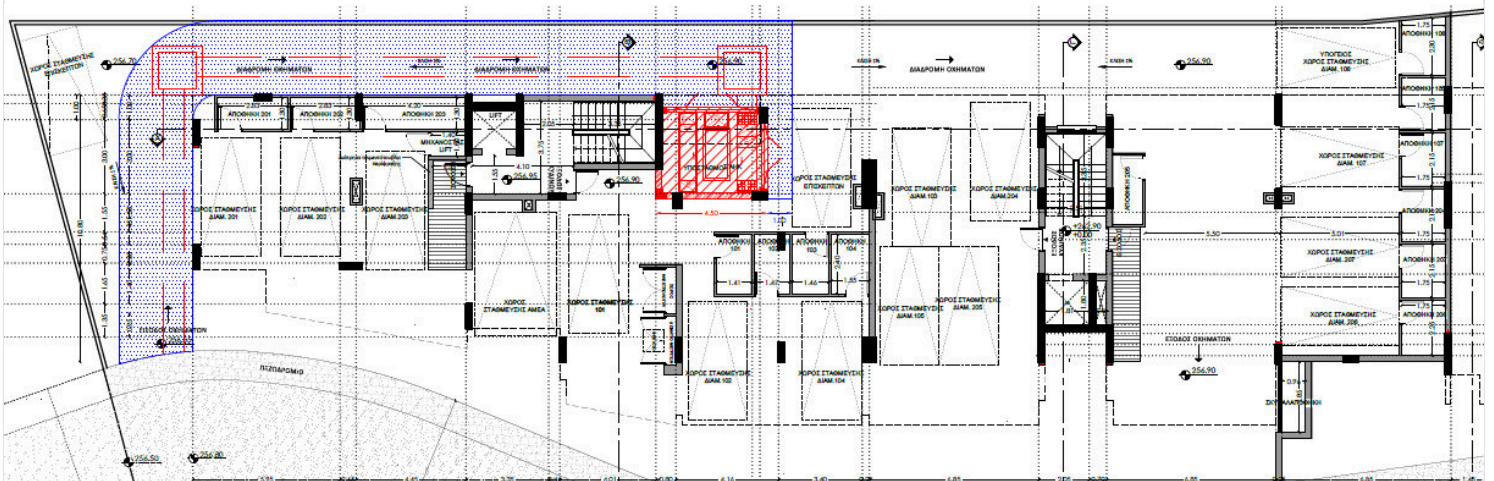
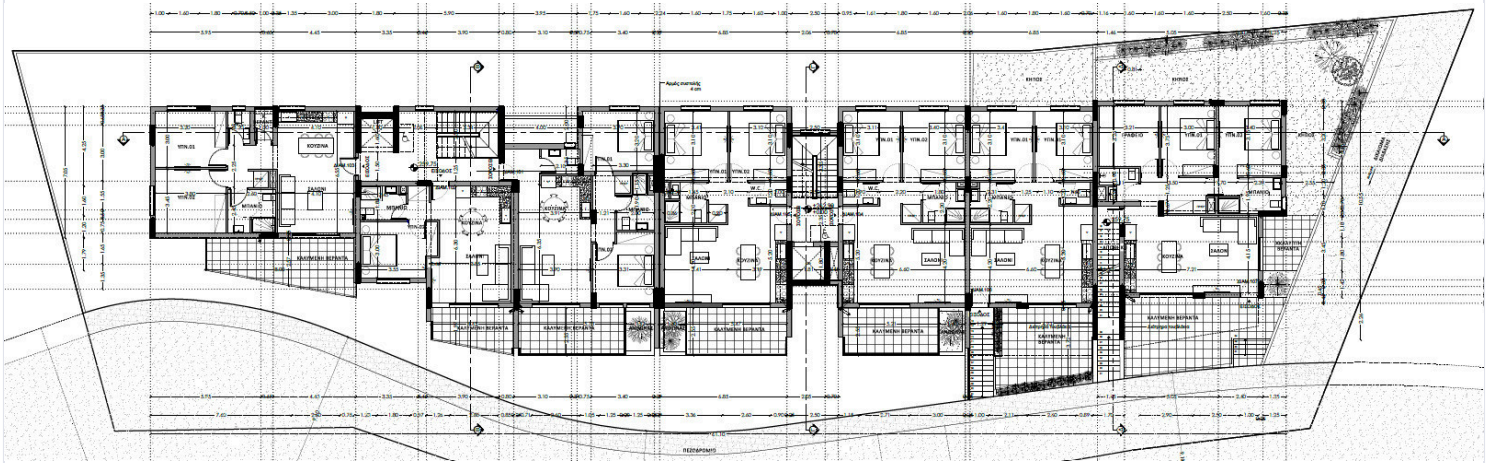
This stylish two-bedroom home offers an internal space of 76.65 square meters, thoughtfully laid out for comfortable modern living. Situated on the first floor of a two-storey development, the apartment features an open-plan kitchen and living area, with large windows for plenty of natural light.

Palodeia is a peaceful residential area known for its green surroundings and friendly community atmosphere. It benefits from close proximity to schools, supermarkets, and other daily amenities, all within a short drive. The area offers a blend of countryside charm while allowing easy access to the city center, making it ideal for both families and professionals.

*Location on map is indicative.



Floor plans



Additional information

Facilities

Parking, Covered

Storage

Contact us



Katerina Athini

✉ katerina@cyprusdomus.com

