

#8406

New Apartments For sale in Palodia Area

 Palodeia, Limassol

€175,000 +VAT





Overview

Specifications

Bedrooms



1

Bathrooms



1

Covered

52.85 m²

Type

Apartment

Status

Off plan

Covered veranda

9.5 m²

Description

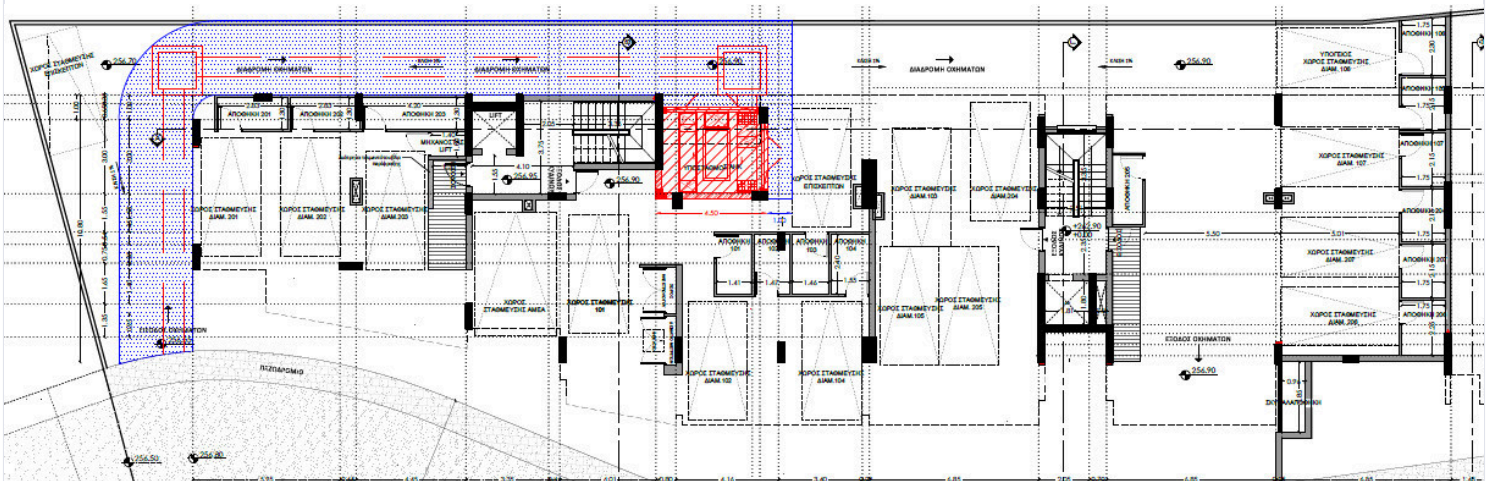
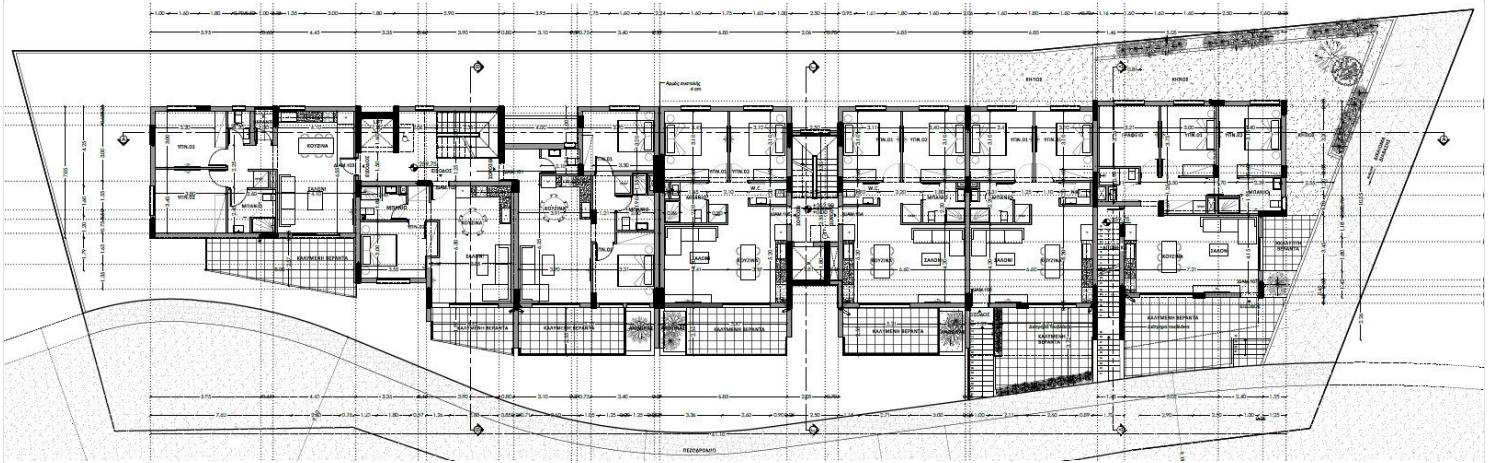
This modern 1-bedroom apartment offers a smart living space of 52.85 square meters. Located on the first floor of a low-rise, two-level building, the apartment features an open-plan living and dining area, a well-designed kitchen, and a contemporary bathroom. Large windows provide natural light, creating a bright and inviting atmosphere throughout the home.

The apartment is ideally situated in Palodeia, a peaceful and sought-after area known for its pleasant environment and convenient location. Palodeia offers beautiful views and a relaxed lifestyle, while being close to all everyday amenities including shops, schools, and leisure facilities. The area is known for its blend of tranquil residential streets and easy access to nearby city attractions.

*Location on map is indicative.



Floor plans



Additional information

Facilities

Parking, Covered

Storage

Contact us



Katerina Athini

✉ katerina@cyprusdomus.com

