

#8407

New Penthouses For sale in Palodia Area

 Palodeia, Limassol

€260,000 +VAT





Overview

Specifications

Bedrooms

 2

Bathrooms

 1

Covered

 76.65 m²

Type

Apartment

Status

Off plan

Toilets

1

Description

This thoughtfully designed property offers a generous internal space of 76.65 square meters, perfect for comfortable living. Featuring two bedrooms, one bathroom and 1 guest w/c, this apartment is ideal for couples, small families, or as a smart investment.

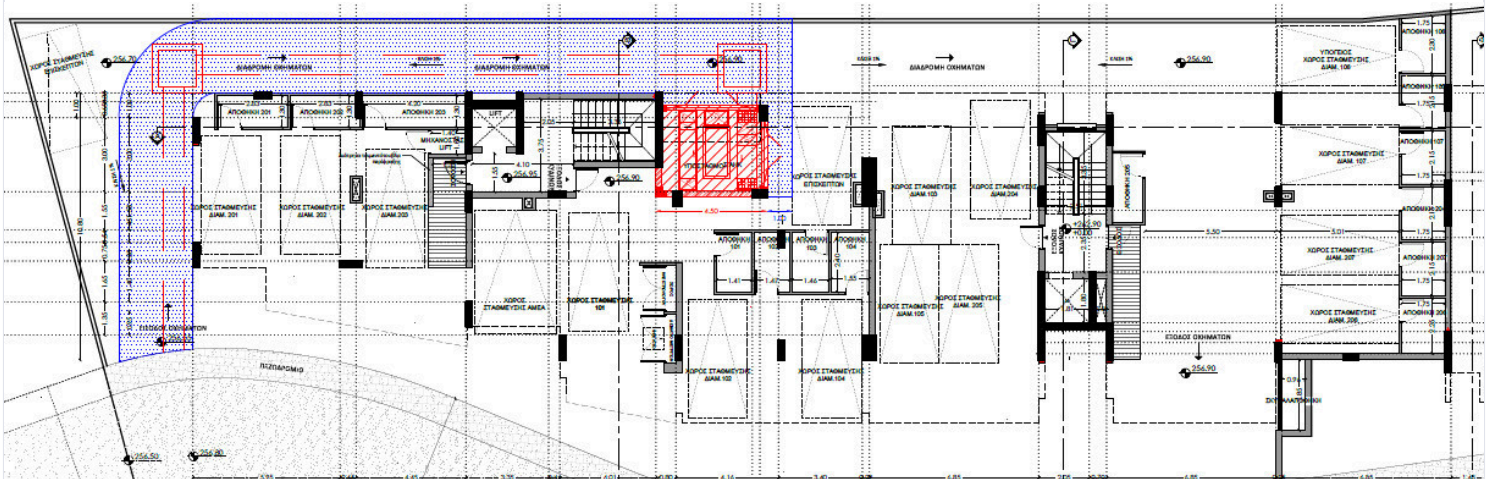
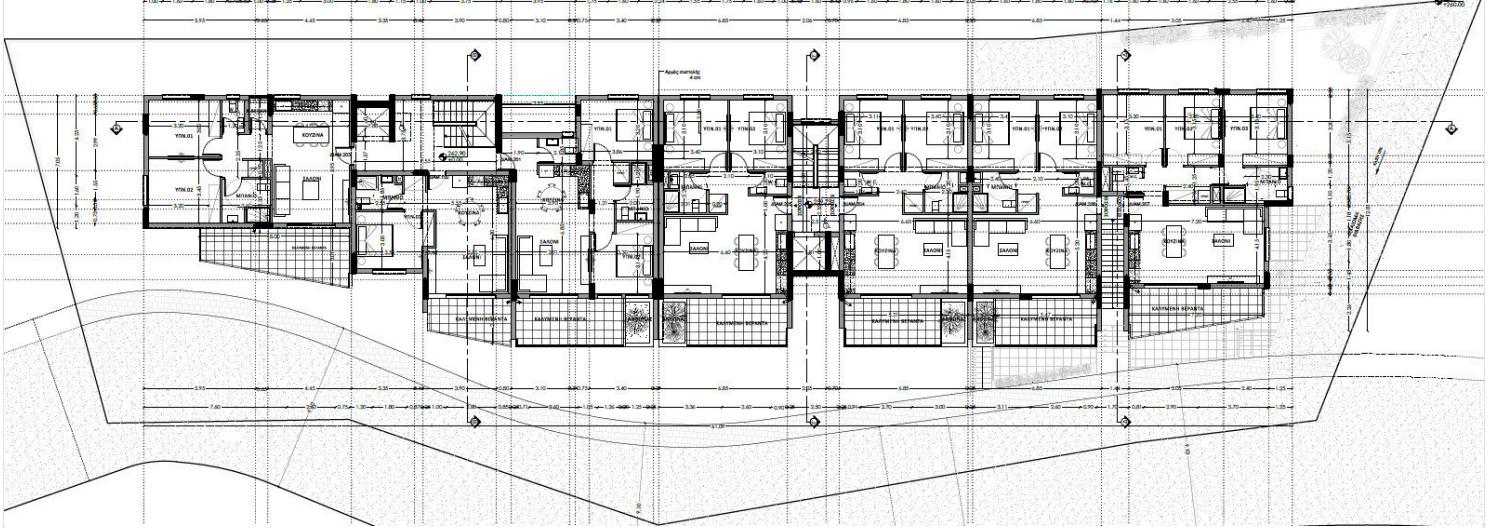
Enjoy light-filled, open-plan living with high-quality finishes throughout. Large windows offer lovely views and bring an airy feel to the space. The penthouse position ensures privacy and plenty of natural light.

Palodeia is a peaceful residential area known for its green surroundings and friendly community atmosphere. It benefits from close proximity to schools, supermarkets, and other daily amenities, all within a short drive. The area offers a blend of countryside charm while allowing easy access to the city center, making it ideal for both families and professionals.

*Location on map is indicative.



Floor plans



Additional information

Facilities

Parking, Covered

Storage

Contact us



Katerina Athini

✉ katerina@cyprusdomus.com

