

#8497

New Houses For Sale in Palodeia area.

 Palodeia, Limassol

€480,000 +VAT





Overview

Specifications

Bedrooms



3

Bathrooms



2

Covered

150 m²

Type

House

Toilets

1

Plot

249 m²

Status

Under construction

Description

This residential complex consists of four detached two-floor residences, all three-bedroom situated in the northern suburbs of Limassol, in Palodeia area.

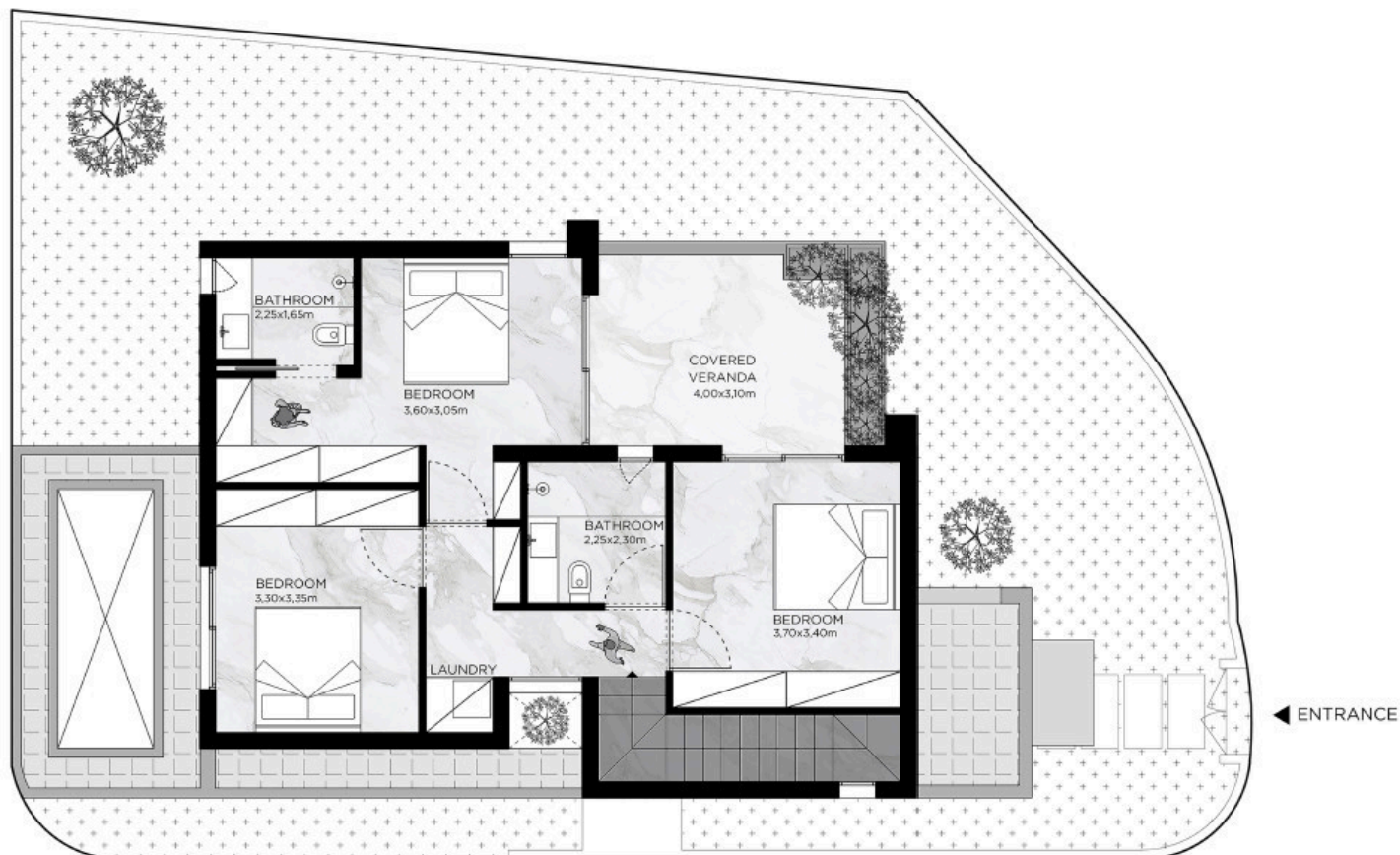
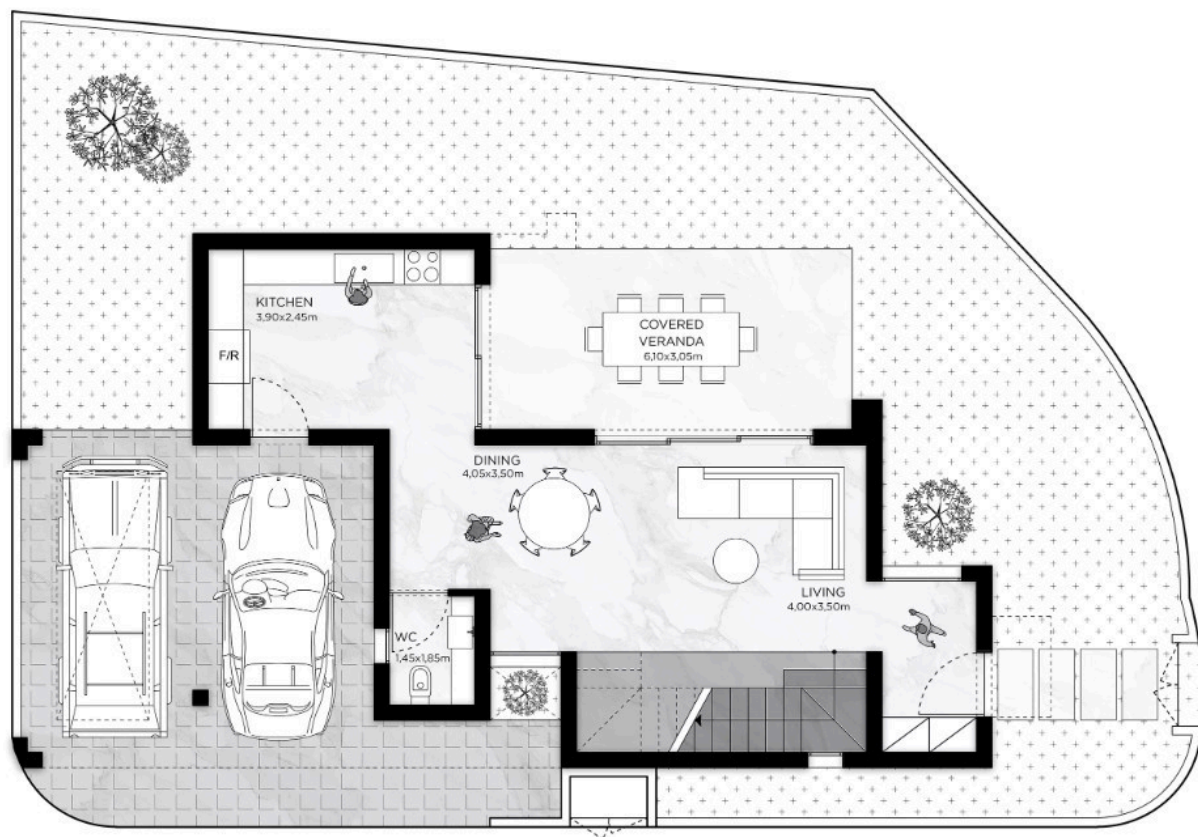
The houses are build on a plot on a hill with a panoramic view, opening to a large expanse of nature.

The house on the ground floor consists of an open plan kitchen, dining and living area, and 1 guest w/c. On the first floor you will find a laundry room, 3 bedrooms and 2 bathrooms (1 ensuite).

*Location on map is indicative.



Floor plans



Additional information

Facilities

Aircondition, Provision

Heating, Provision

Parking, Covered

Solar water heater

Features

Ceramic tiles

Double glazing

Granite countertops

Laundry room

Pressurized water system

Contact us



Katerina Athini

✉ katerina@cyprusdomus.com

