

#8502

New Apartment For Sale In Erimi Area

 Erimi, Limassol

€235,000 +VAT





Overview

Specifications

Bedrooms

 2

Bathrooms

 1

Covered

 86 m²

Type

Apartment

Status

Under construction

Toilets

1

Description

With a generous internal space of 86 m², this residence offers comfortable living in a well-designed setting. The apartment features two spacious bedrooms, one bathroom, and one guest w/c.

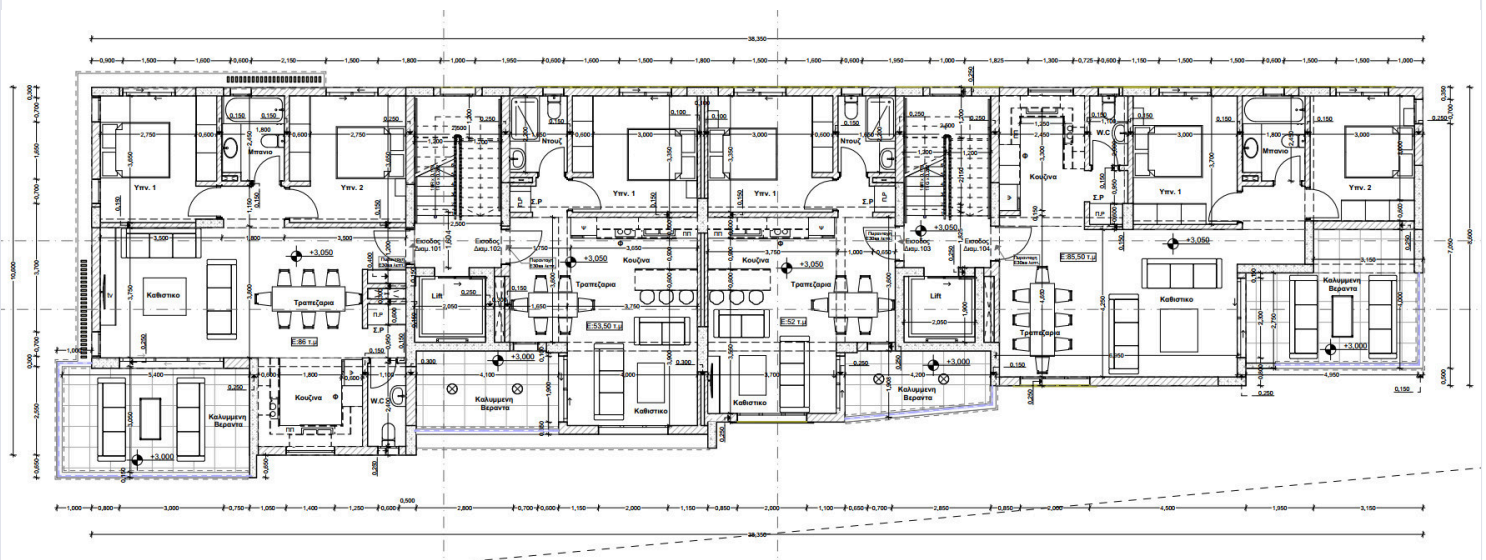
This apartment is part of a well-planned two-floor building, providing residents with a sense of privacy and quiet. The layout makes good use of the available space, ensuring each room receives plenty of natural light.

Residents enjoy easy access to local shops, cafes, and other amenities. The area is well connected by road, offering convenient travel to nearby towns and the coast. With a mix of modern living and beautiful surroundings, Erimi provides an ideal setting for families and individuals alike.

*Location on map is indicative.



Floor plans



Additional information

Facilities

Parking, Covered

Solar water heater

Features

Guest WC

Contact us



Katerina Athini

✉ katerina@cyprusdomus.com

