

#8504

New Penthouses With Roof Garden For Sale In Erimi Area

 Erimi, Limassol

€290,000 +VAT





Overview

Specifications

Bedrooms



2

Bathrooms



1

Covered

86 m²

Type

Apartment

Status

Under construction

Toilets

1

Description

With a generous internal space of 86 m², this residence offers comfortable living in a well-designed setting. The apartment features two spacious bedrooms, one bathroom, and one guest w/c.

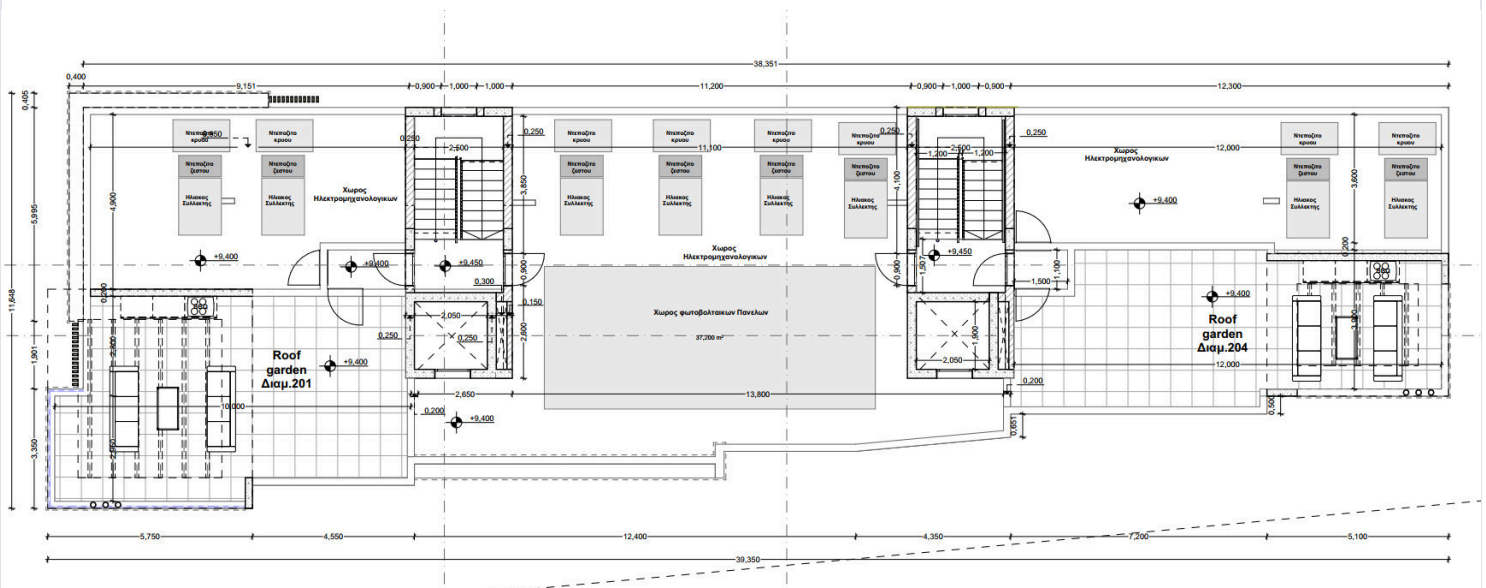
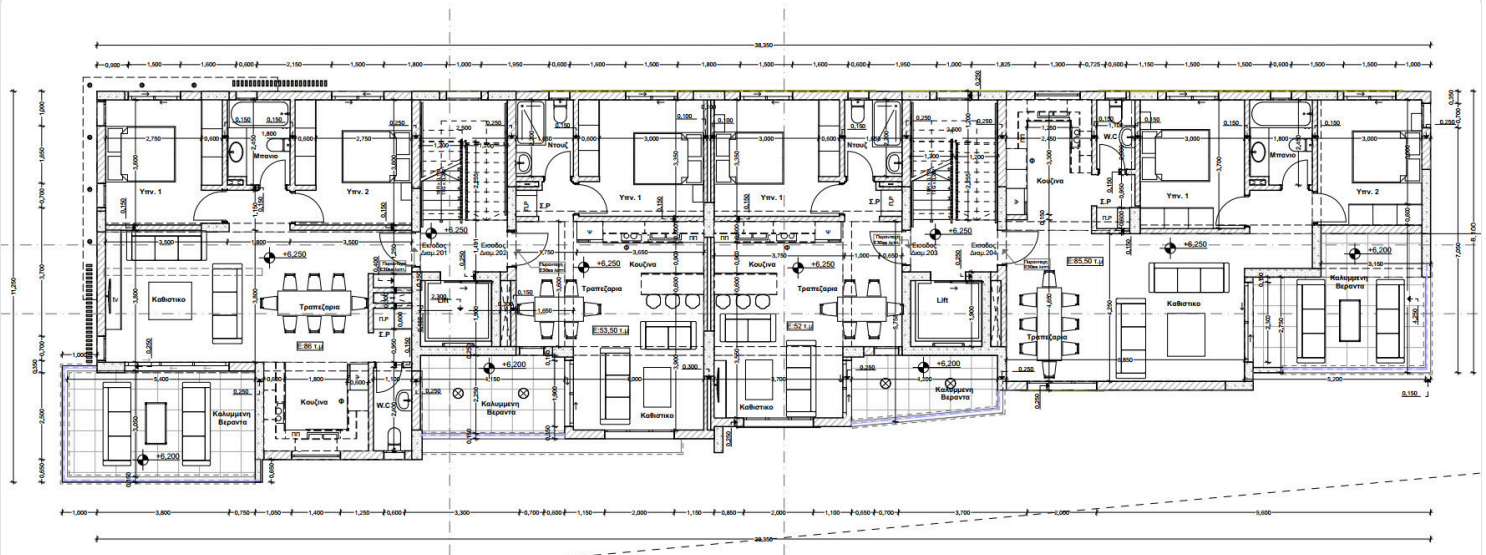
The apartment is located on the top floor, offering extra privacy and excellent views. The open plan living and dining area is designed for natural light and a fresh, airy feel. Large windows and a well-planned layout make this space warm and inviting.

Residents enjoy easy access to local shops, cafes, and other amenities. The area is well connected by road, offering convenient travel to nearby towns and the coast. With a mix of modern living and beautiful surroundings, Erimi provides an ideal setting for families and individuals alike.

*Location on map is indicative.



Floor plans



Additional information

Facilities

Parking, Covered

Solar water heater

Features

Guest WC

Roof garden

Contact us



Katerina Athini

✉ katerina@cyprusdomus.com

