

#8505

New Penthouses For Sale In Erimi Area

📍 Erimi, Limassol

€160,000 +VAT





Overview

Specifications

Bedrooms



Bathrooms



Covered

 **55.3 m²**

Type

Apartment

Status

Under construction

Description

Offering a spacious internal area of 55.30 m², this residence is thoughtfully designed to provide comfort and convenience. The property consists of 1 bedroom and 1 bathroom, making it ideal for singles, couples, or as a smart investment opportunity.

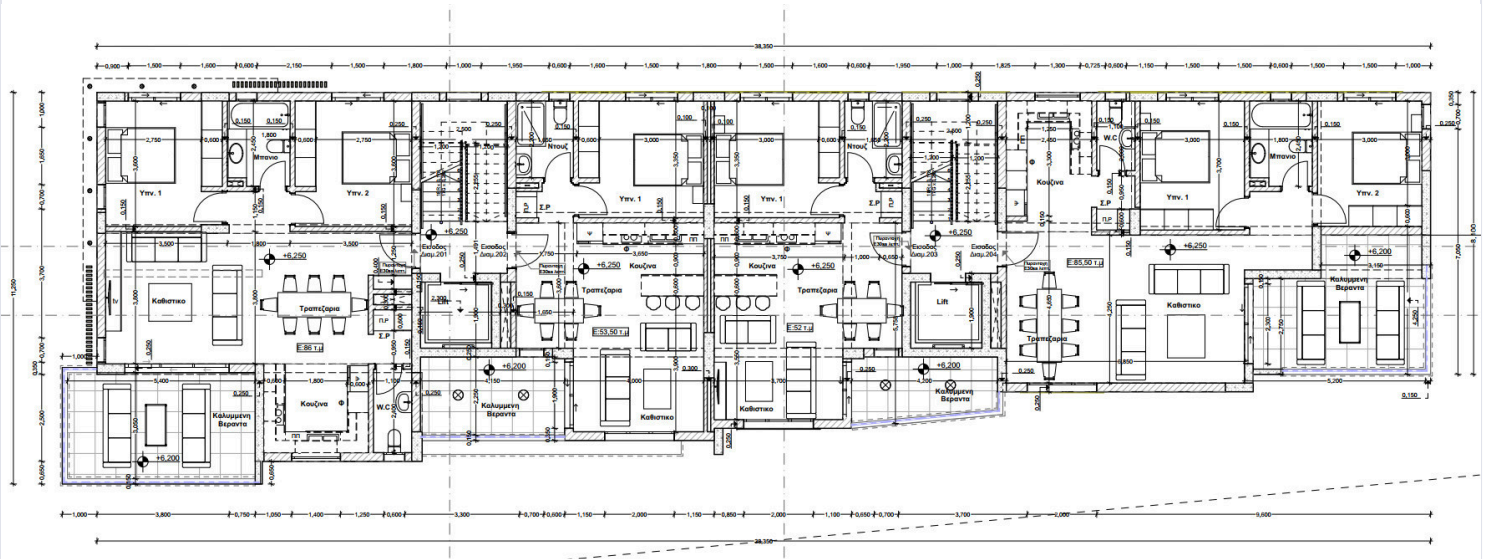
This apartment is part of a well-planned two-floor building, providing residents with a sense of privacy and quiet. The layout makes good use of the available space, ensuring each room receives plenty of natural light.

Residents enjoy easy access to local shops, cafes, and other amenities. The area is well connected by road, offering convenient travel to nearby towns and the coast. With a mix of modern living and beautiful surroundings, Erimi provides an ideal setting for families and individuals alike.

*Location on map is indicative.



Floor plans



Additional information

Facilities

Parking, Covered

Solar water heater

Features

Guest WC

Contact us



Katerina Athini

✉ katerina@cyprusdomus.com

