

#8624

# New Apartments For Sale in Episkopi Area

📍 Episkopi Lemesou, Limassol

€230,000 +VAT





# Overview

## Specifications

Bedrooms



2

Bathrooms



2

Covered

79.4 m<sup>2</sup>

Type

**Apartment**

Status

**Off plan**

Covered veranda

**10 m<sup>2</sup>**

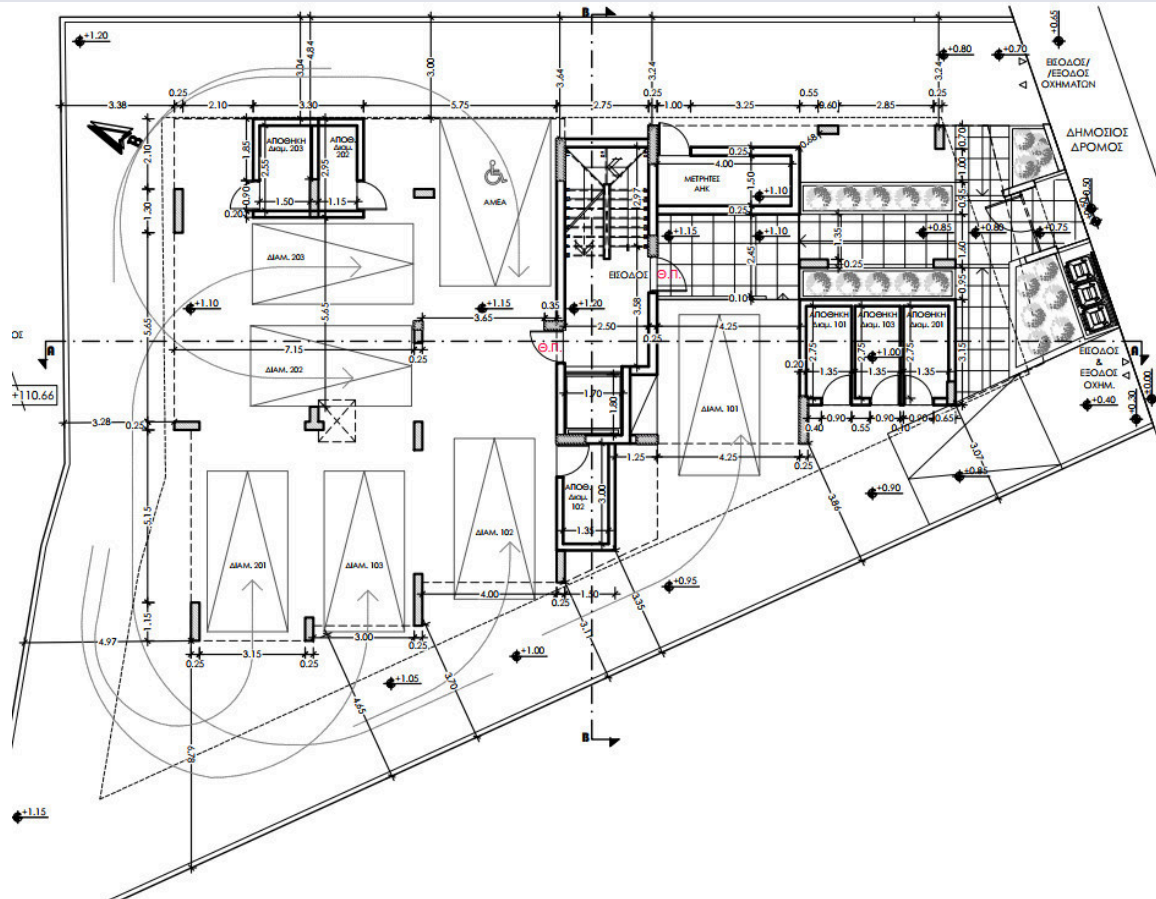
## Description

Modern two-bedroom apartment, situated in the peaceful neighborhood of Episkopi Limassol. This property features an internal space of 79.4 square meters, offering spacious living and premium comfort. The apartment is located on the first floor of a two-story building and includes two bathrooms.

Episkopi is a charming area known for its blend of traditional character and modern amenities. Residents enjoy easy access to local shops, cozy cafes, and essential services, all within a welcoming community atmosphere. The area boasts beautiful natural surroundings and is conveniently located for easy commuting, making it an ideal place for both relaxation and practicality.

\*Location on map is indicative.



[illegible]

# Additional information

## Features

Guest WC

Open plan

## Contact us



**Katerina Athini**

✉ [katerina@cyprusdomus.com](mailto:katerina@cyprusdomus.com)

