

#8678

New Modern Penthouse For Sale In Panthea Area

 Panthea, Limassol

€855,500 +VAT





Overview

Specifications

Bedrooms


 3

Bathrooms

 2

Covered

 165.67 m²

Type	Apartment	Status	Under construction
Toilets	1	Energy efficiency rating	 A+
Covered veranda	46.76 m ²		

Description

Modern penthouse apartment in the sought-after area of Panthea. This impressive home offers a generous internal space of 165.67 m². The apartment features three spacious bedrooms, two bathrooms (1 ensuite) and 1 guest w/c.

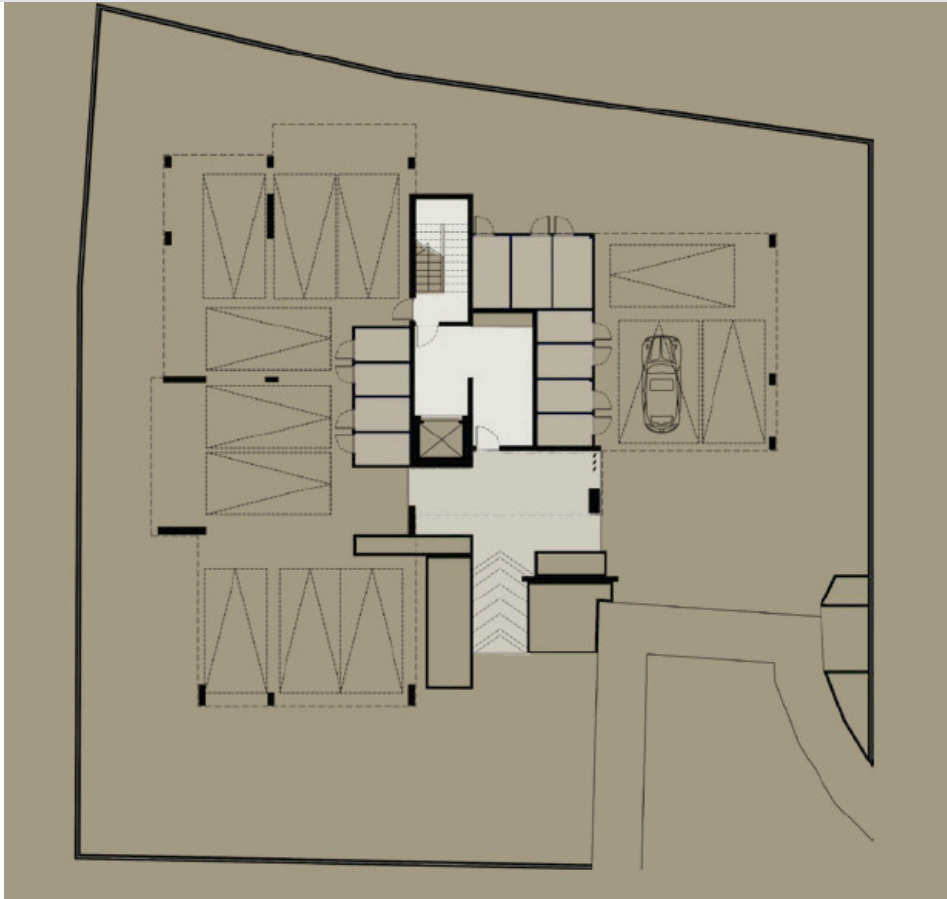
Designed with comfort in mind, the apartment is equipped with a central AC system for year-round climate control. With an Energy Efficiency A+ rating, this home is both environmentally friendly and cost-effective, helping to reduce energy bills.

Panthea is known for its peaceful surroundings and stunning city views. The area offers easy access to schools, supermarkets, and parks, making it a popular choice for both families and professionals. Residents enjoy a tranquil environment while being close to entertainment and main highways.

*Location on map is indicative.



Floor plans



Additional information

Facilities

Aircondition, Central system

Gated complex

Parking, Covered

Solar photovoltaic panels

Solar water heater

Features

Alarm system (provision)

Electric car charger

Entrance gate, automated

Fly screens

Pressurized water system

Shutters, electric

Sound insulation

Thermal insulation

Walk-in closet

Contact us



Katerina Athini

 katerina@cyprusdomus.com

