

#8949

# New Apartment For Sale In Naafi Area

📍 Petrou Kai Pavlou, Limassol

€540,000 +VAT





# Overview

## Specifications

Bedrooms



3

Bathrooms



2

Covered



116 m<sup>2</sup>

Type

Apartment

Status

Under construction

Covered veranda

27 m<sup>2</sup>

## Description

Spacious three-bedroom apartment, located on the second floor of a modern three-story building in the sought-after area of Naafi. This property features an internal space of 116 square meters, offering an excellent layout with ample natural light throughout.

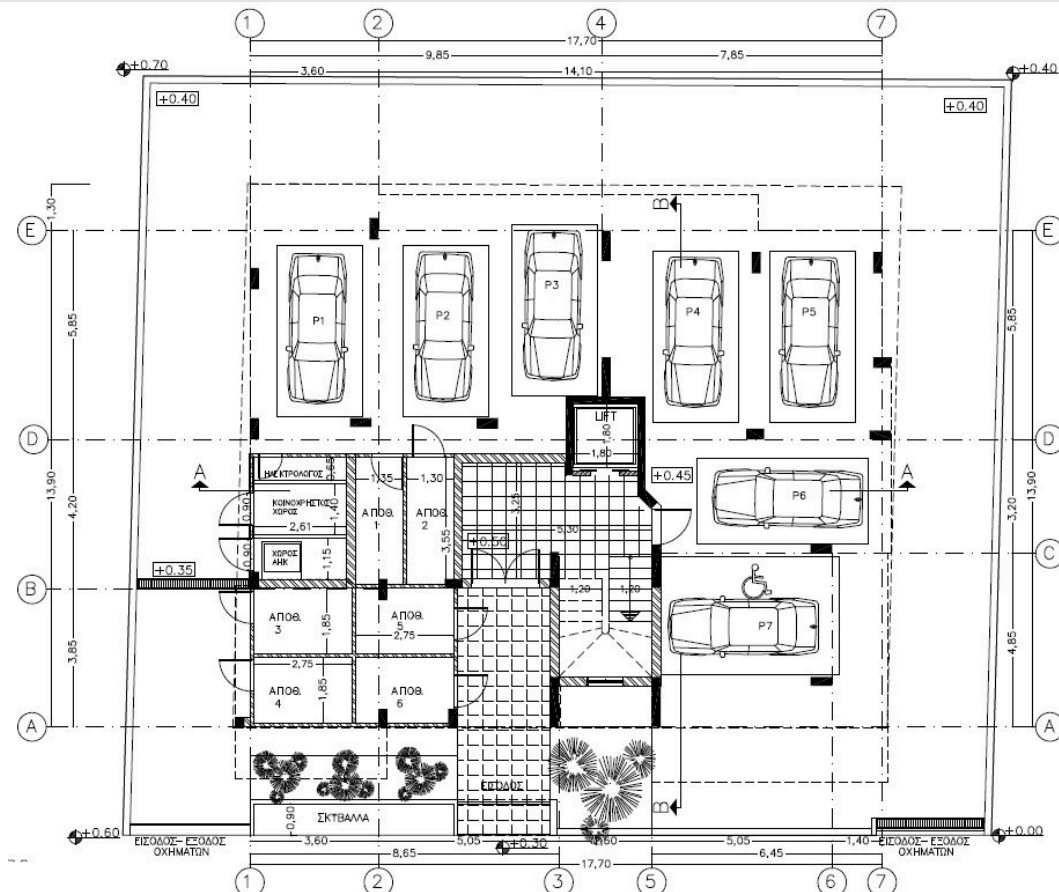
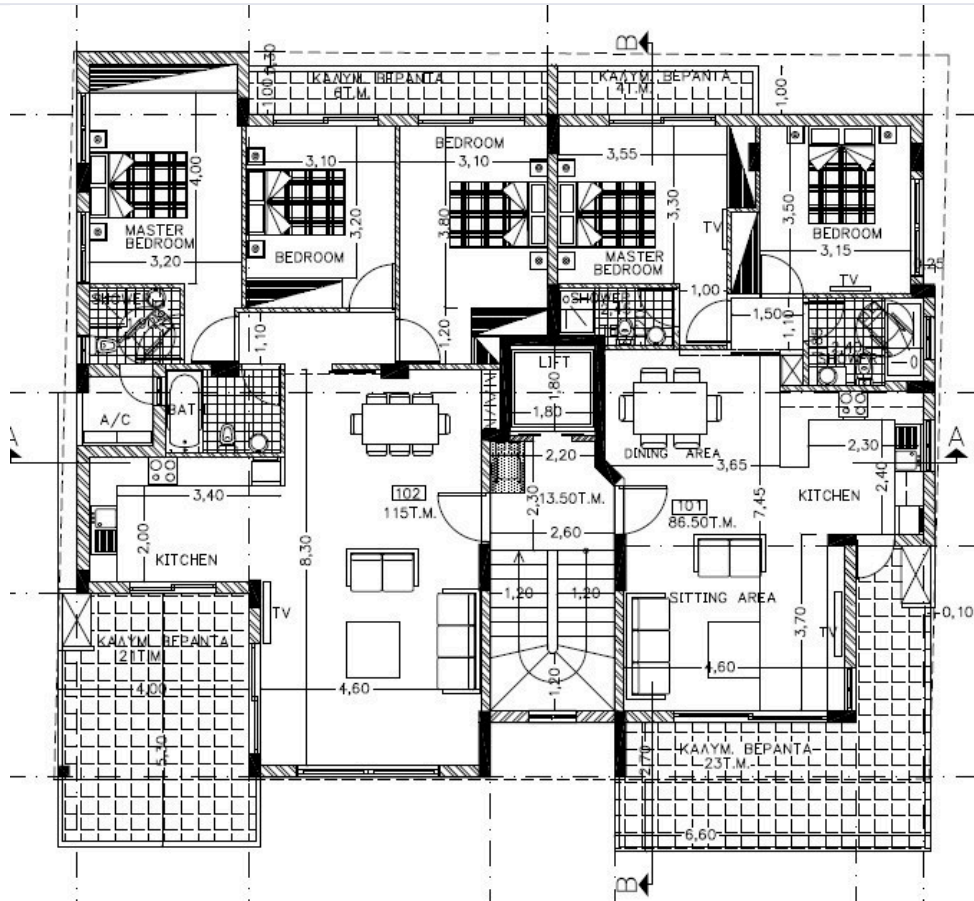
Designed for comfortable family living, the apartment includes three bedrooms and two bathrooms. The open-plan living and dining area creates a welcoming environment, while well-sized windows offer views of the surrounding neighborhood. Quality materials and stylish finishes are used throughout, ensuring a space that is both elegant and practical.

The area offers easy access to schools, supermarkets, shops, and essential services, making it ideal for families and professionals alike. Residents can enjoy nearby parks, local cafes, and excellent transport links to the city center.

\*Location on map is indicative.



# Floor plans



# Additional information

## Facilities

Aircondition, Split system

Heating, Split system

Parking, Covered

Solar water heater

Storage

## Features

Alarm system (provision)

Ceramic tiles

Laminate flooring

Pressurized water system

Shutters, electric

Thermal insulation

## Contact us



**Katerina Athini**

✉ [katerina@cyprusdomus.com](mailto:katerina@cyprusdomus.com)

