

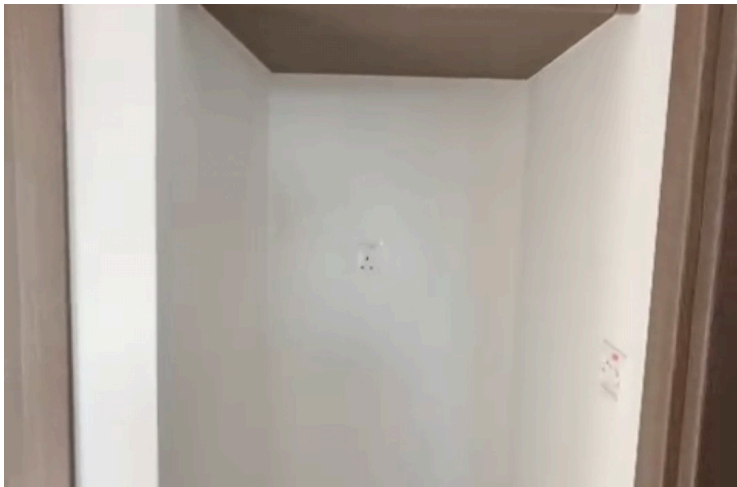
#8967

Spacious Penthouse Apartment with Three Bedrooms in Linopetra

 Linopetra, Limassol

€515,000 +VAT





Overview

Specifications

Bedrooms

 3

Bathrooms

 2

Covered

 98.13 m²

Type

Apartment

Toilets

1

Covered veranda

19.28 m²

Status

Completed

Description

For sale is a spacious penthouse apartment located in the desirable area of Linopetra. This completed property offers a total internal space of 98.13 square meters, ensuring comfort and convenience for modern living.

The apartment features three well-sized bedrooms, providing ample space for family or guests. There are two contemporary bathrooms designed with functionality and quality in mind. The open-plan living and dining areas are filled with natural light, creating a warm and welcoming atmosphere throughout the home.

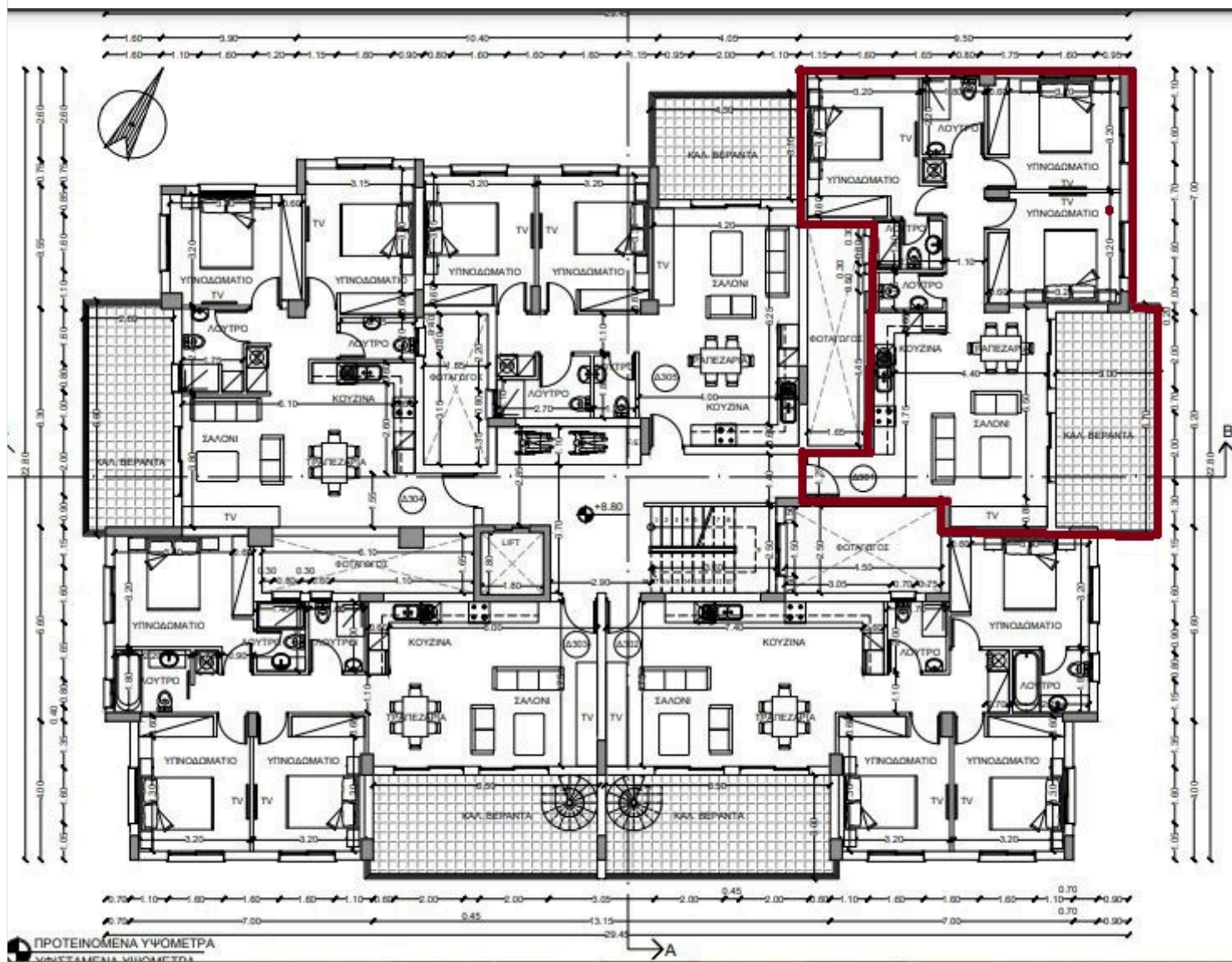
Linopetra is known for its vibrant yet peaceful character. The area offers a range of amenities, including schools, shops, cafes, and easy access to main roads and local beaches. It is a favored location for both families and professionals, thanks to its balance between city lifestyle and relaxation.

Don't miss this excellent opportunity to own a penthouse in one of the area's most sought-after locations. Contact Cyprus Domus today to arrange a viewing or find out more about this unique property.

*Location on the map is indicative.



Floor plans



Additional information

Facilities

Parking, Covered

Storage

Features

En suite bathroom

Guest WC

Contact us



Vassilis Papadopoulos

📞 (+357) 99662023

✉️ info@cyprusdomus.com

