

#9028

New Houses For Sale in Palodeia Area

📍 Palodeia, Limassol

€550,000 +VAT





Overview

Specifications

Bedrooms



3

Bathrooms




2

Covered



145 m²

Type	House	Basement	58 m ²
Toilets	1	Status	Off plan
Plot	310 m ²	Energy efficiency rating	 A+
Covered veranda	21 m ²		

Description

This stunning house in Palodeia is a fantastic opportunity for those seeking a modern and energy-efficient home. With an internal space of 145 m², this property boasts three spacious bedrooms, two well-appointed bathrooms and one guest w/c. Designed with comfort and style in mind, this home is perfect for families or those looking for extra space.

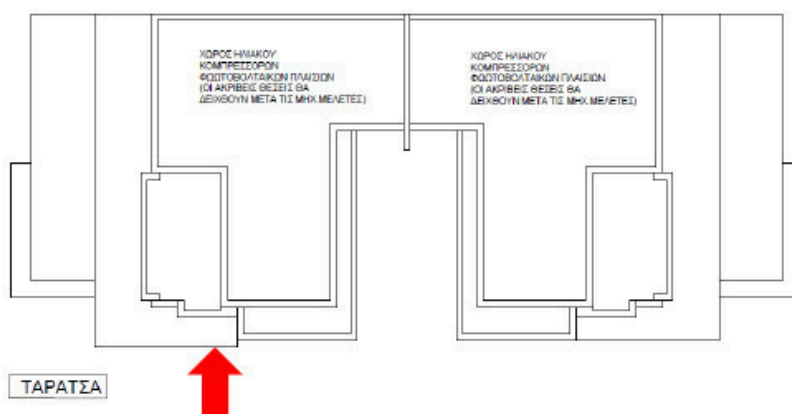
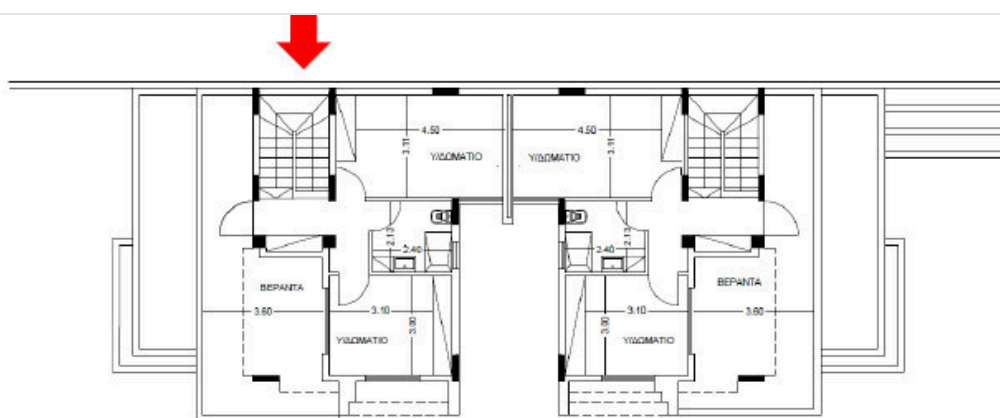
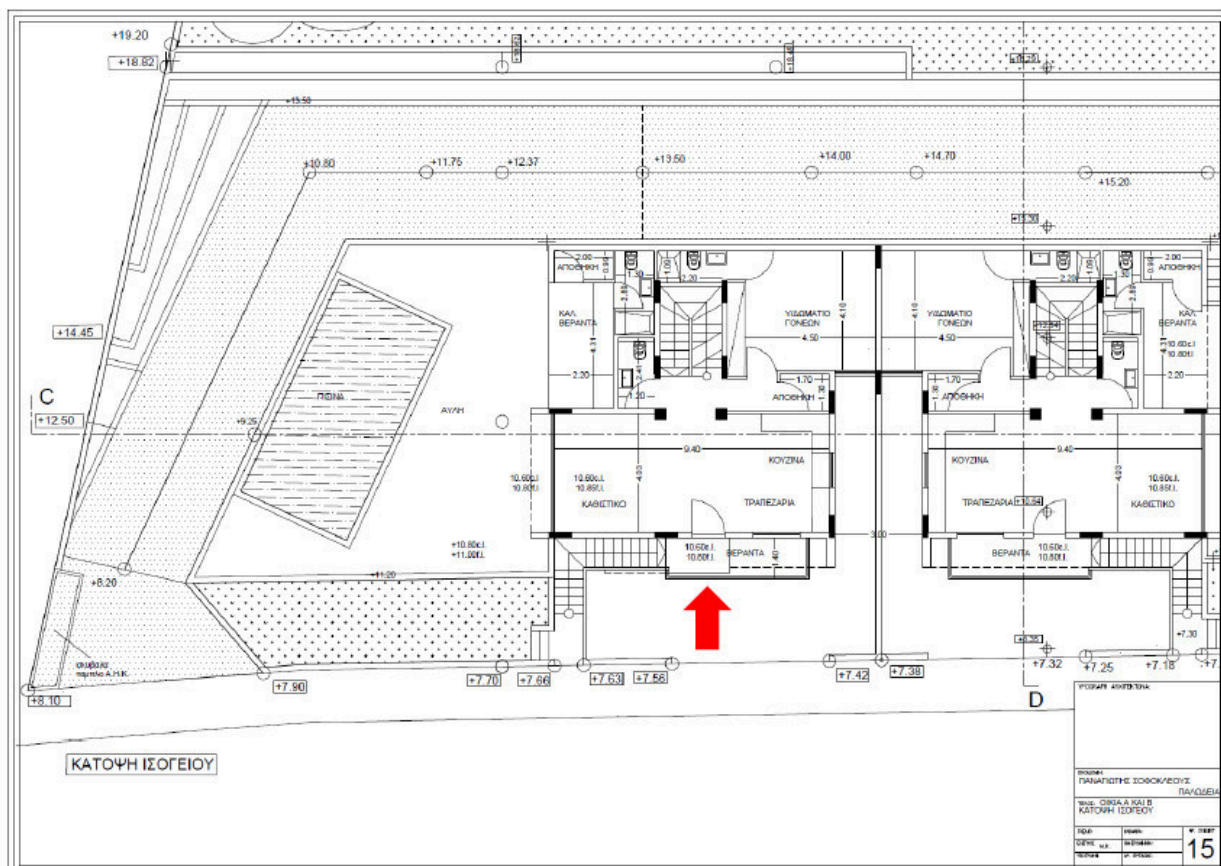
With an impressive energy efficiency rating of A+, this house combines modern living with eco-friendly design. This off-plan property is a rare find, presenting a unique chance to customize your future home.

Residents can enjoy a variety of local amenities, including shops, restaurants, and parks, all within close reach.

*Location on map is indicative.



Floor plans



Additional information

Facilities

Aircondition, Provision

Heating, Provision

Parking, Covered

Pool, Optional

Solar water heater

Features

Ceramic tiles

Double glazing

Guest WC

Pressurized water system

Thermal insulation

Contact us



Katerina Athini

✉ katerina@cyprusdomus.com

