

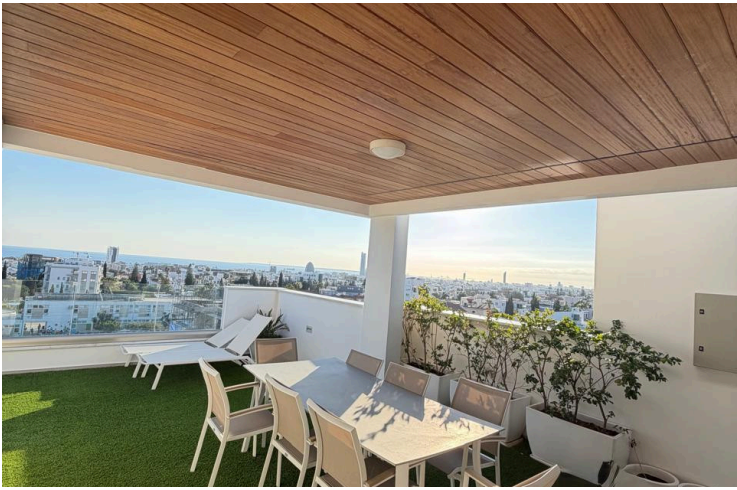
#9109

3 Bedroom Penthouse Apartment with Sea View in Columbia, Germasogeia

 Germasogeia, Limassol

€1,000,000





Overview

Specifications

Bedrooms

 3


Bathrooms

 1

Covered

 125 m²

Type	Apartment
Showers	2
Toilets	3
Covered veranda	29 m ²
Roof garden	55 m ²

Status	Resale
Year of construction	2017
Furnished	Fully furnished
Structure	Concrete
Energy efficiency rating	 A

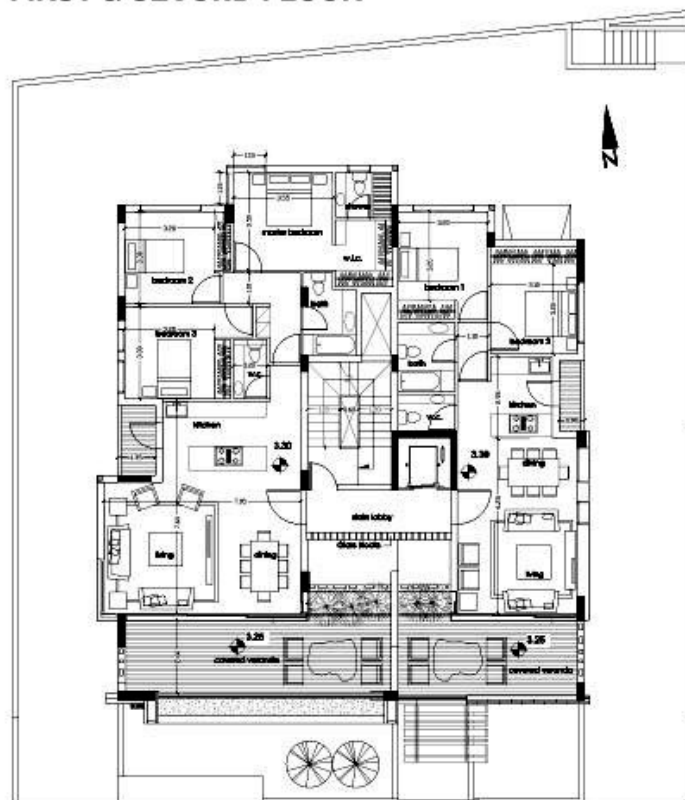
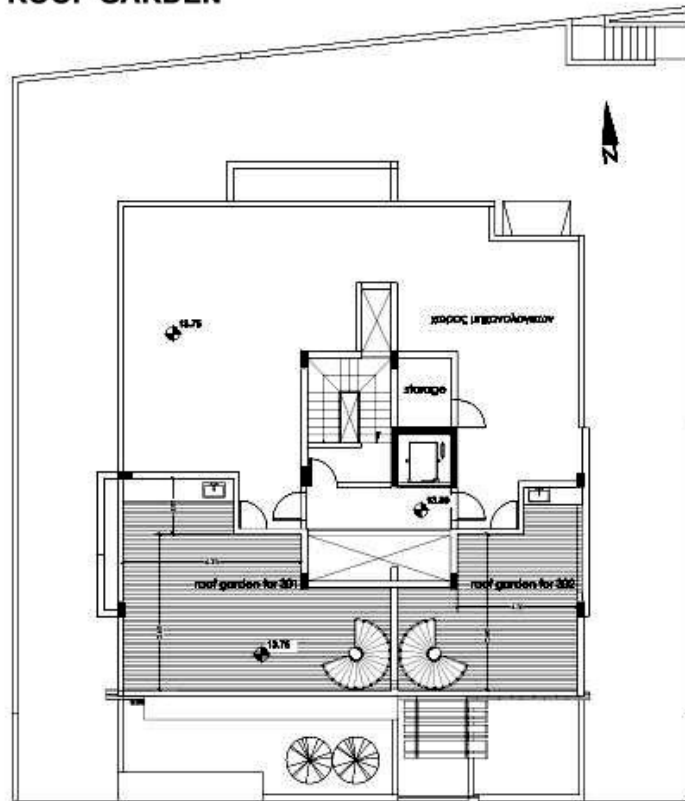
Description

Discover this stunning penthouse apartment offering the perfect blend of luxury, space, and breathtaking views. Nestled in the highly desirable Columbia area, this exceptional residence boasts unobstructed panoramic sea and city vistas and is ideally situated just 2 minutes from the vibrant Kolonakiou main street, with cafés, supermarkets, and everyday conveniences at your doorstep — and only 5 minutes from the beach. Spanning 159 m² of beautifully designed living space, the penthouse features three generous bedrooms and three modern bathrooms, plus a fantastic extra room on the private roof garden level — perfect for a guest suite, stylish home office, or staff accommodation. Step out onto your own private roof garden and enjoy peaceful outdoor living with spectacular views — a true rarity in such a prime location.

Key Features:

- Bedrooms: 3 + extra multipurpose room on roof level
- Bathrooms: 3
- Total area: 159 m²
- Type: Penthouse (3rd floor)
- Parking: Covered
- Furnishing: Fully furnished
- Additional amenities: Private roof garden, elevator, alarm system, balcony, playroom, storage room
- Barbeque area on Roof Garden
- Air conditioning: Full (all rooms)
- Heating: Electric Wall Heaters
- Construction year: 2017





Additional information

Facilities

Aircondition, Central system
Storage

Heating, Central

Parking, Covered

Features

Balcony, front
Bright
Connected to electric mains
Easy access to main roads
Entrance gate, automated
High ceilings
Near amenities
Quiet area
Sea view
Utility room

Barbeque
City view
Country view
En suite shower
Floor-to-ceiling windows
Internet
Open plan
Rental potential
Shower
Veranda, large

Below market value
Combined kitchen and dining area
Double glazing
Entrance gate
Granite countertops
Kitchen appliances
Outdoor kitchen
Roof garden
Thermal insulation

Distances

Amenities



300 m

Airport



62 km

Sea



2.6 km

Public transport



500 m

Schools



4.4 km

Contact us



Andreas Chouloudes

📞 (+357) 94098260

✉️ andreas@cyprusdomus.com

