

#9132

New Contemporary Apartments In Kato Polemidia

 Kato Polemidia, Limassol

€325,000 +VAT





Overview

Specifications

Bedrooms

 2

Bathrooms

 2

Covered

 78 m²

Type

Apartment

Status

Completed

Covered veranda

27 m²

Description

Every unit has been crafted with generous spaces and home comfort in mind.

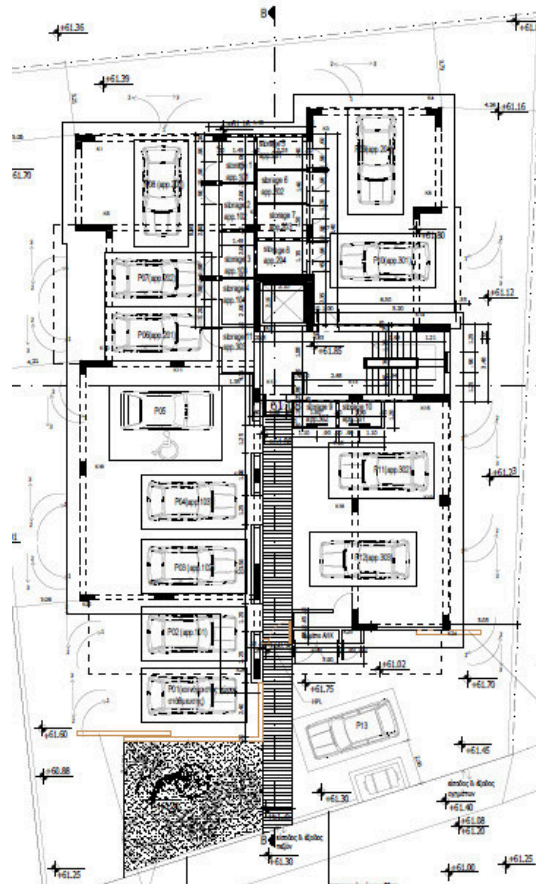
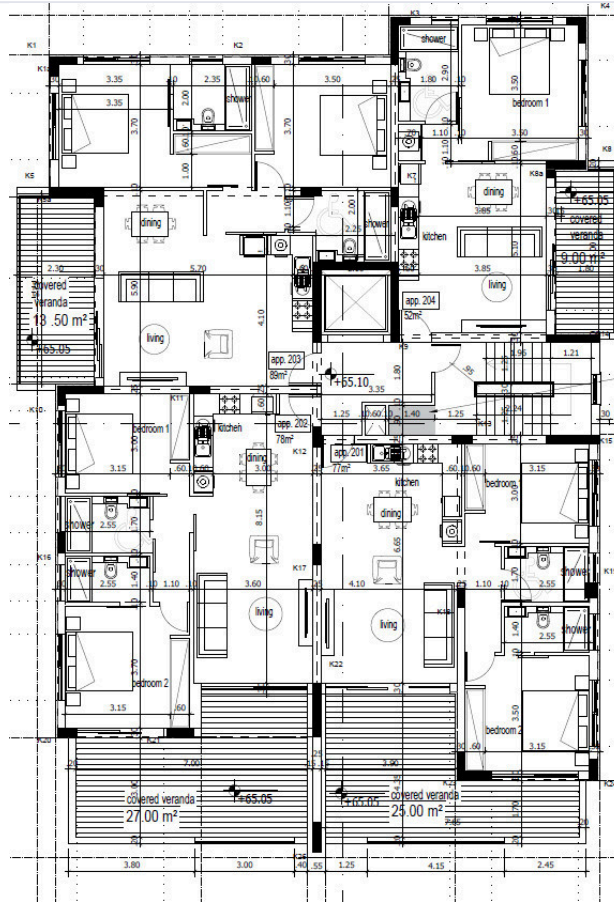
The open-plan kitchen, living room, and dining area create an inviting and airy ambiance, ideal for both relaxation and entertaining.

Additionally, the apartments feature large verandas, extending the living space outdoors and allowing residents to savor Limassol's pleasant weather.

*Location on the map is indicative.



Floor plans



Additional information

Facilities

Parking, Covered

Solar water heater

Storage

Features

Double glazing

Contact us



Vassilis Papadopoulos

📞 (+357) 99662023

✉️ info@cyprusdomus.com

