

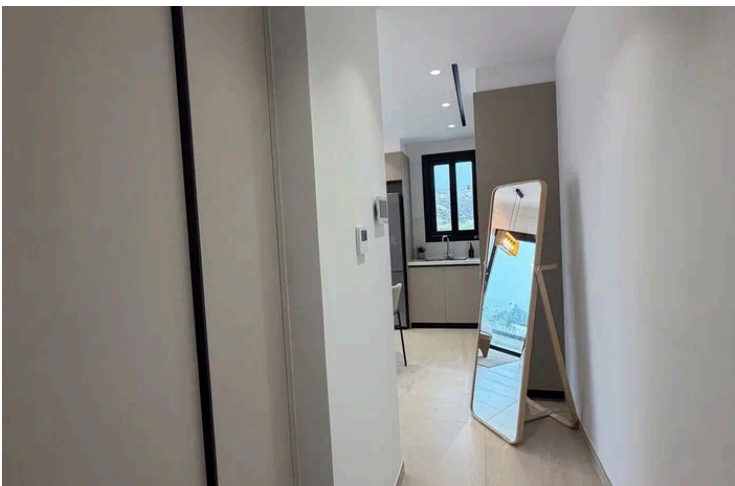
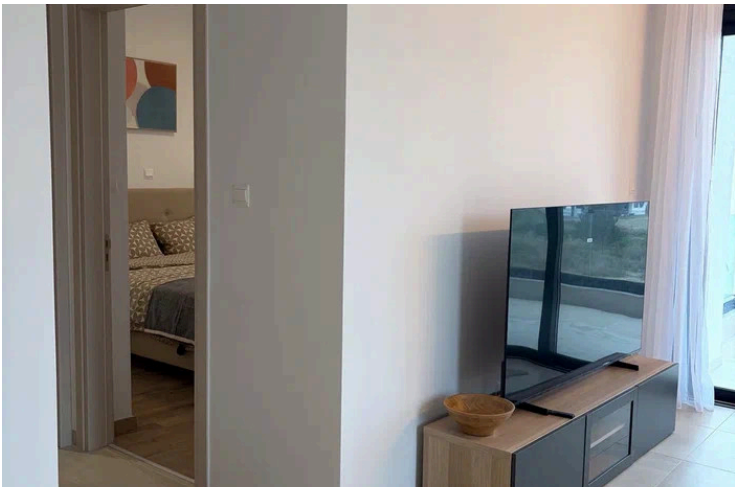
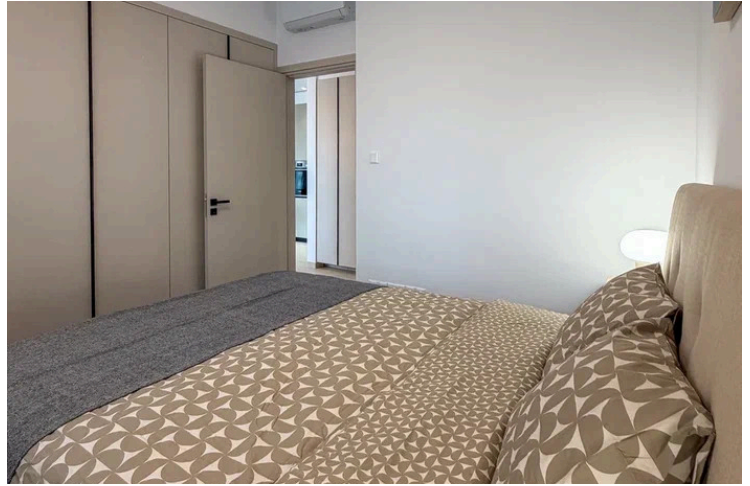
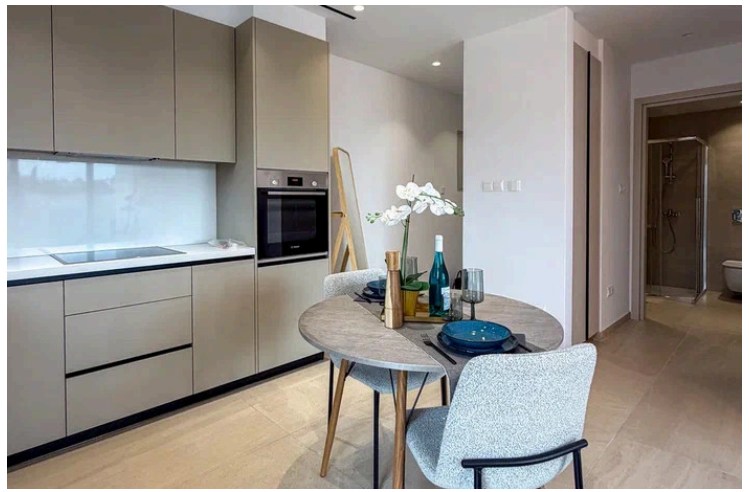
#9133

Apartment For Rent In Panthea Area

📍 Panthea, Limassol

€1,500 /month





Overview

Specifications

Bedrooms



Bathrooms



Covered

 51 m²

Type

Apartment

Furnished

Fully furnished

Status

Key ready

Description

Available for rent is a fully furnished apartment in the desirable area of Panthea. This modern apartment offers an internal space of 51 m², providing comfortable living with a smart layout. The property features one spacious bedroom, a well-appointed bathroom, and a bright open-plan living and dining area. The kitchen comes fully equipped with quality appliances and plenty of storage.

Panthea is known for its peaceful atmosphere, green surroundings, and convenient location close to key amenities. Residents benefit from easy access to schools, shops, restaurants, and main transportation routes, making Panthea an ideal area for both professionals and couples seeking a calm yet connected lifestyle.

This apartment is equipped with a central AC system to ensure comfortable temperatures year-round. Residents can also enjoy the communal swimming pool, perfect for relaxing and socializing.

*Location on map is indicative.



Additional information

Facilities

Aircondition, Central system

Parking, Covered

Pool, Communal

Solar photovoltaic panels

Solar water heater

Features

Kitchen appliances

Shutters, electric

Contact us



Katerina Athini

✉ katerina@cyprusdomus.com

