

#9134

New Detached Houses For Sale In Paramythia Area

📍 Paramythia, Limassol

€346,500 +VAT





Overview

Specifications

Bedrooms



3

Bathrooms



2

Covered



124.26 m²

Type

House

Toilets

1

Plot

394.5 m²

Covered veranda

11.61 m²

Status

Off plan

Description

This home offers a spacious internal area of 124.26 m², thoughtfully designed for comfortable family living. The layout includes three bedrooms, two bathrooms, and one guest w/c.

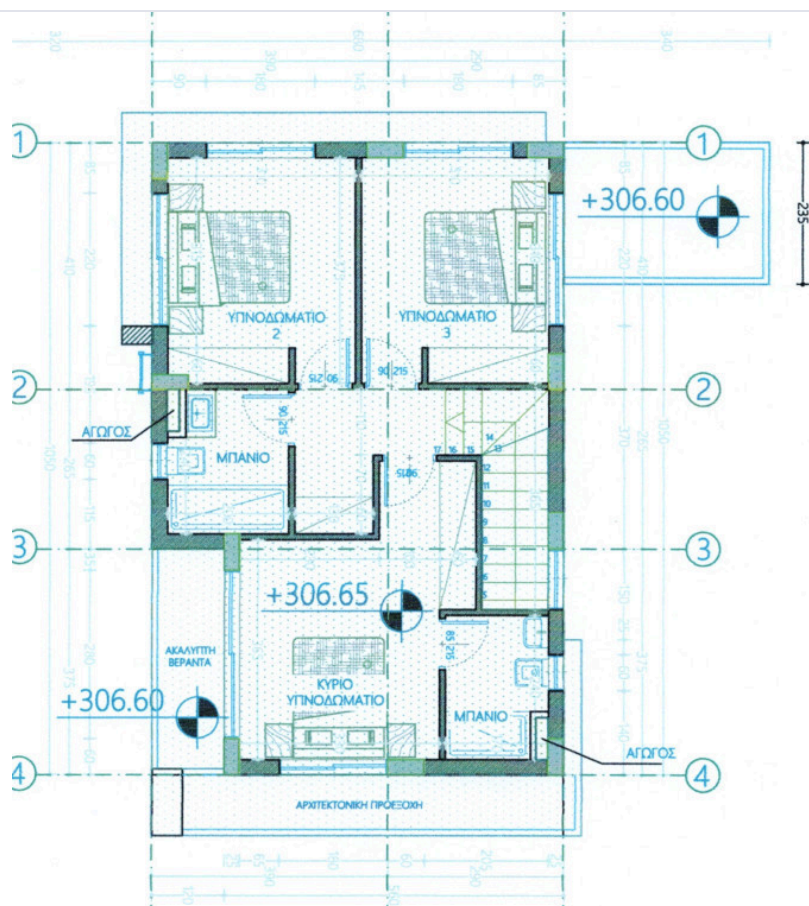
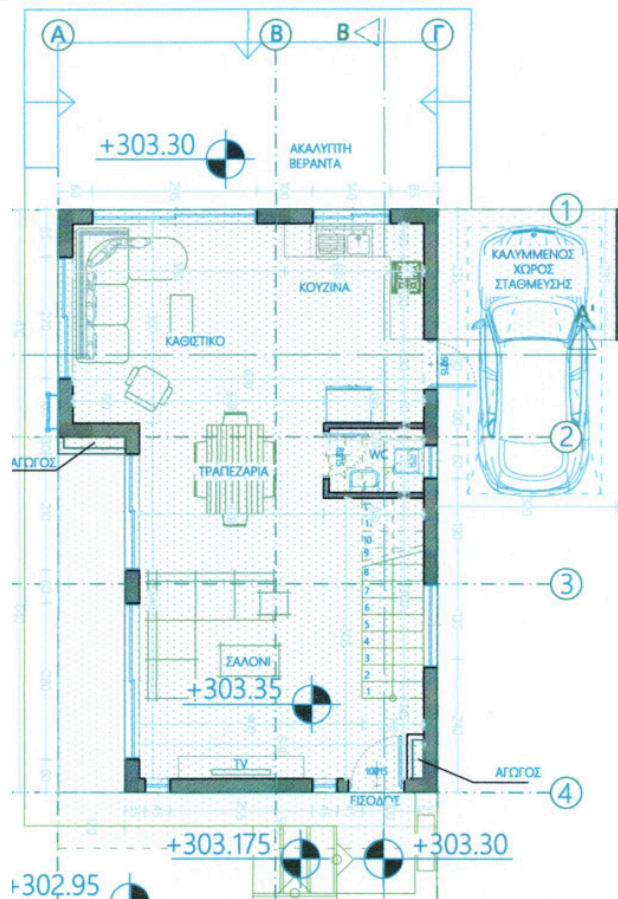
Paramytha is known for its scenic landscape, blending rolling hills, lush greenery, and a tranquil village atmosphere. The area is ideal for those looking to enjoy a relaxed lifestyle while remaining close to essential amenities, schools, and local shops.

The design focuses on natural light and open spaces, ensuring a bright and inviting home environment.

*Location on map is indicative.



Floor plans



Additional information

Facilities

Parking, Covered

Features

En suite bathroom

Guest WC

Open plan

Contact us



Katerina Athini

✉ katerina@cyprusdomus.com

