

#9152

# New Semi-Detached Houses For Sale In Palodia Area

 Palodeia, Limassol





**€435,000** +VAT





# Overview

## Specifications

Bedrooms		Bathrooms		Covered	
 3		 2		 125 m <sup>2</sup>	
Type		House			
Toilets		1			
Plot		313 m <sup>2</sup>			
Covered veranda		15 m <sup>2</sup>			
		Uncovered veranda		30 m <sup>2</sup>	
		Covered parking		20 m <sup>2</sup>	
		Status		Off plan	
		Energy efficiency rating		 A	

## Description

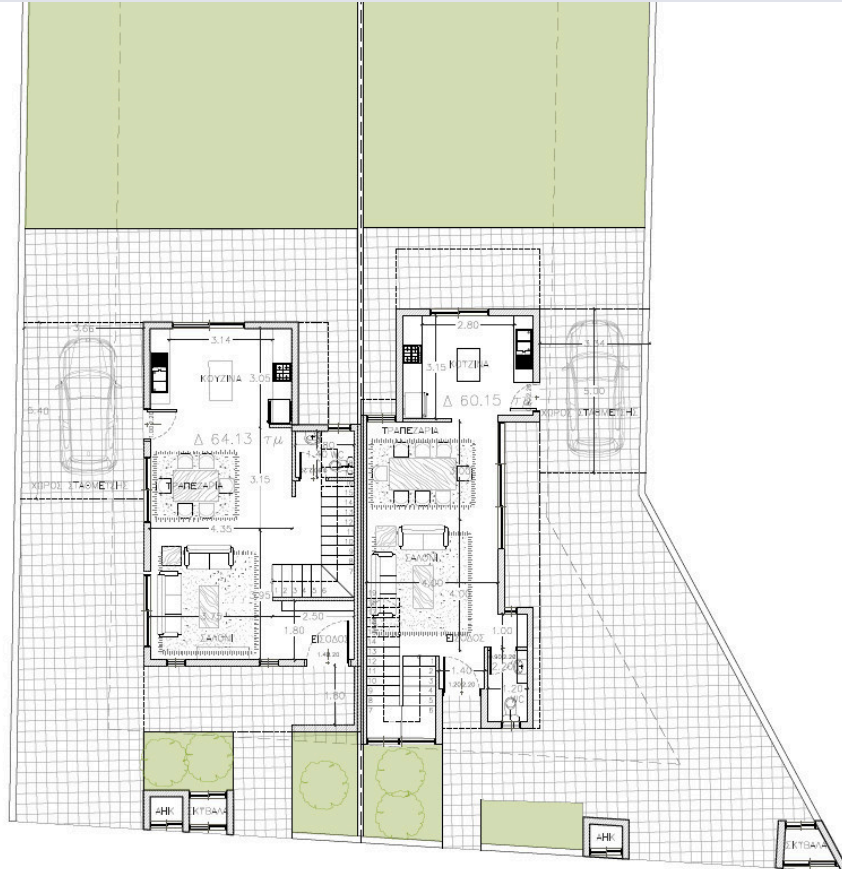
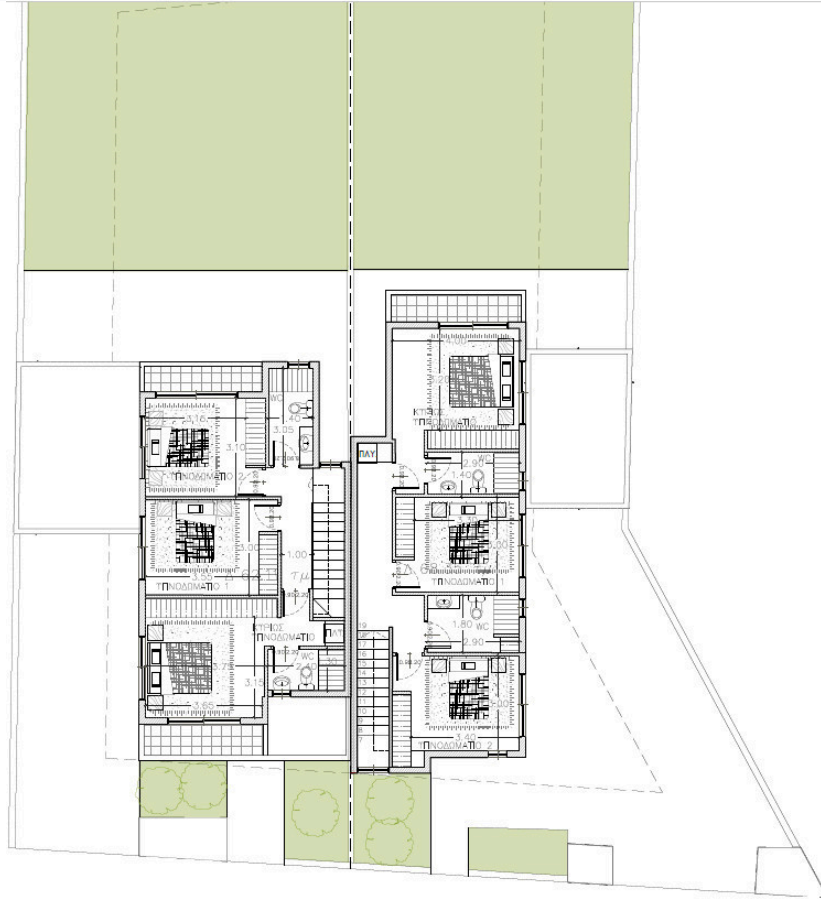
This home with an internal space of 125 m<sup>2</sup> features three well-proportioned bedrooms, two bathrooms, and 1 guest w/c. Enjoy the warmth and efficiency of underfloor heating throughout, ensuring a cozy atmosphere all year round. With an energy efficiency rating of A, this property is designed to minimize utility costs while maximizing comfort and sustainability.

Located in Palodeia, this property benefits from a peaceful residential setting. The area is known for its blend of tranquility and convenience, with scenic green surroundings and easy access to local amenities. Palodeia is favored by those who appreciate a quiet lifestyle, yet want to be within reach of schools, shops, and main transport routes.

\*Location on map is indicative.



# Floor plans



# Additional information

## Facilities

Aircondition, Provision

Solar water heater

Heating, Underfloor

Solar photovoltaic panels

## Features

Alarm system (provision)

Fly screens

Pressurized water system

Double glazing

Granite countertops

Shutters, electric

En suite bathroom

Open plan

Thermal insulation

## Contact us



**Katerina Athini**

 [katerina@cyprusdomus.com](mailto:katerina@cyprusdomus.com)

