

#9277

New Apartment For Sale In Erimi Area

 Erimi, Limassol

€225,000 +VAT





Overview

Specifications

Bedrooms



Bathrooms



Covered

 **81.03 m²**

Type

Apartment

Status

Off plan

Covered veranda

14.98 m²

Description

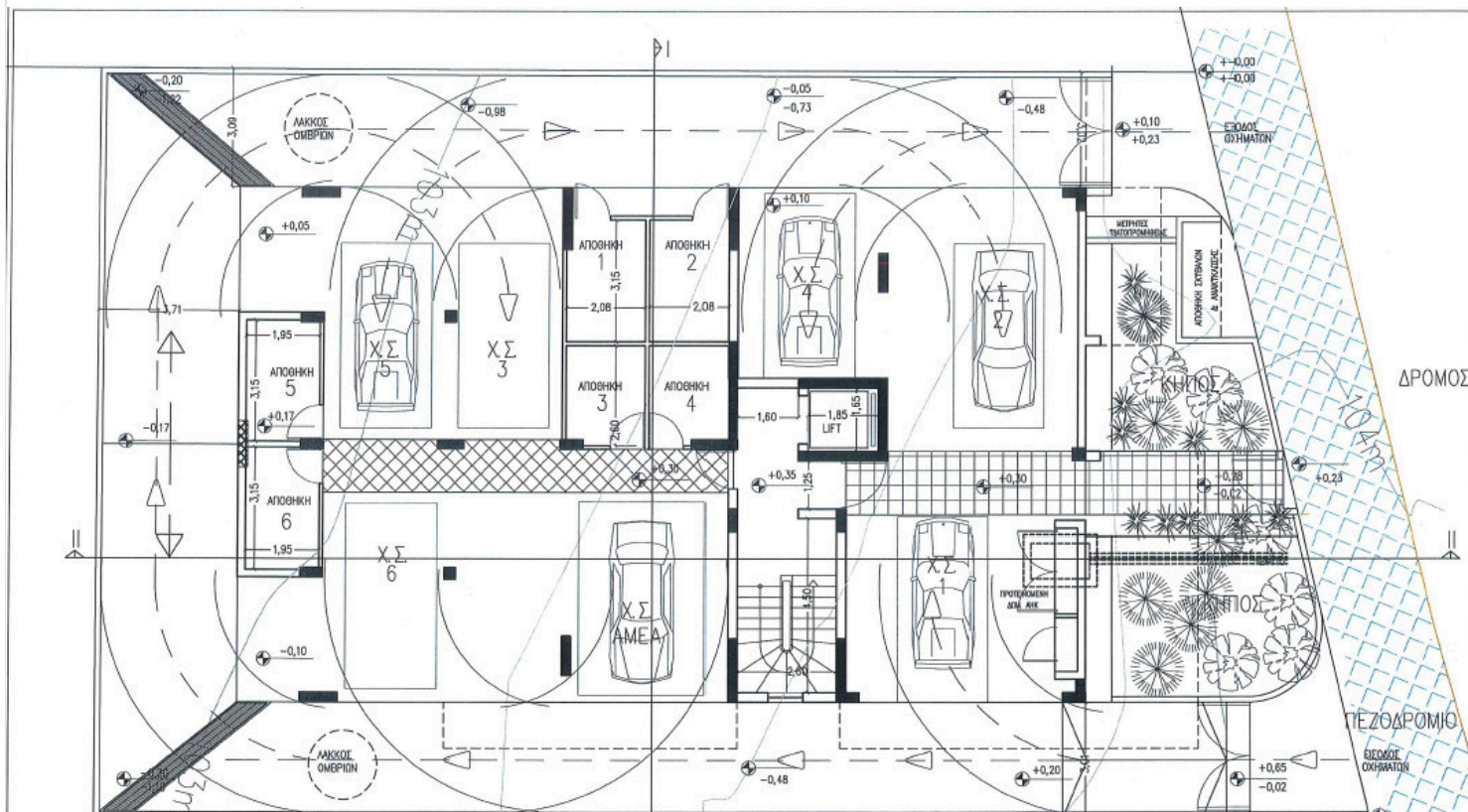
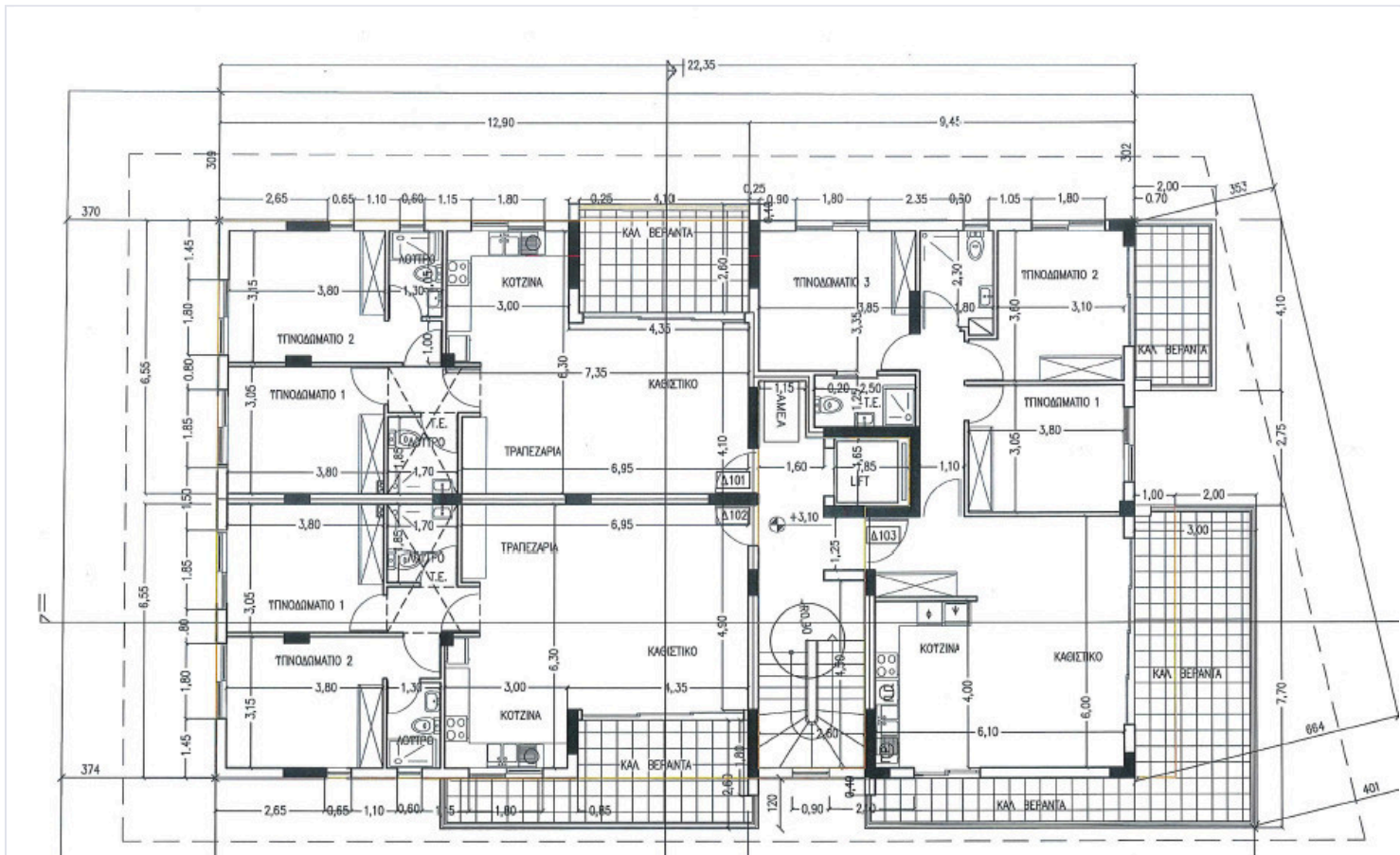
This apartment offers a comfortable internal space of 81.03 m², featuring two spacious bedrooms and two modern bathrooms.

Located in Erimi, this up-and-coming area combines tranquility with convenience. Erimi is known for its peaceful neighborhoods, friendly atmosphere, and easy access to essential amenities. Residents enjoy a relaxed lifestyle, being close to local shops, cafes, and schools. The area also offers excellent transport links, making commuting simple and efficient.

*Location on map is indicative.



Floor plans



Additional information

Facilities

Aircondition, Provision

Parking, Covered

Solar photovoltaic panels (provision)

Solar water heater

Storage

Features

Double glazing

Contact us



Katerina Athini

✉ katerina@cyprusdomus.com

