

#9280

# New Apartment For Sale In Erimi Area

 Erimi, Limassol

**€225,000** +VAT












# Overview

## Specifications

Bedrooms	Bathrooms	Covered
 2	 2	 77.74 m <sup>2</sup>
Type	Apartment	Status
Covered veranda	9.42 m <sup>2</sup>	Off plan

## Description

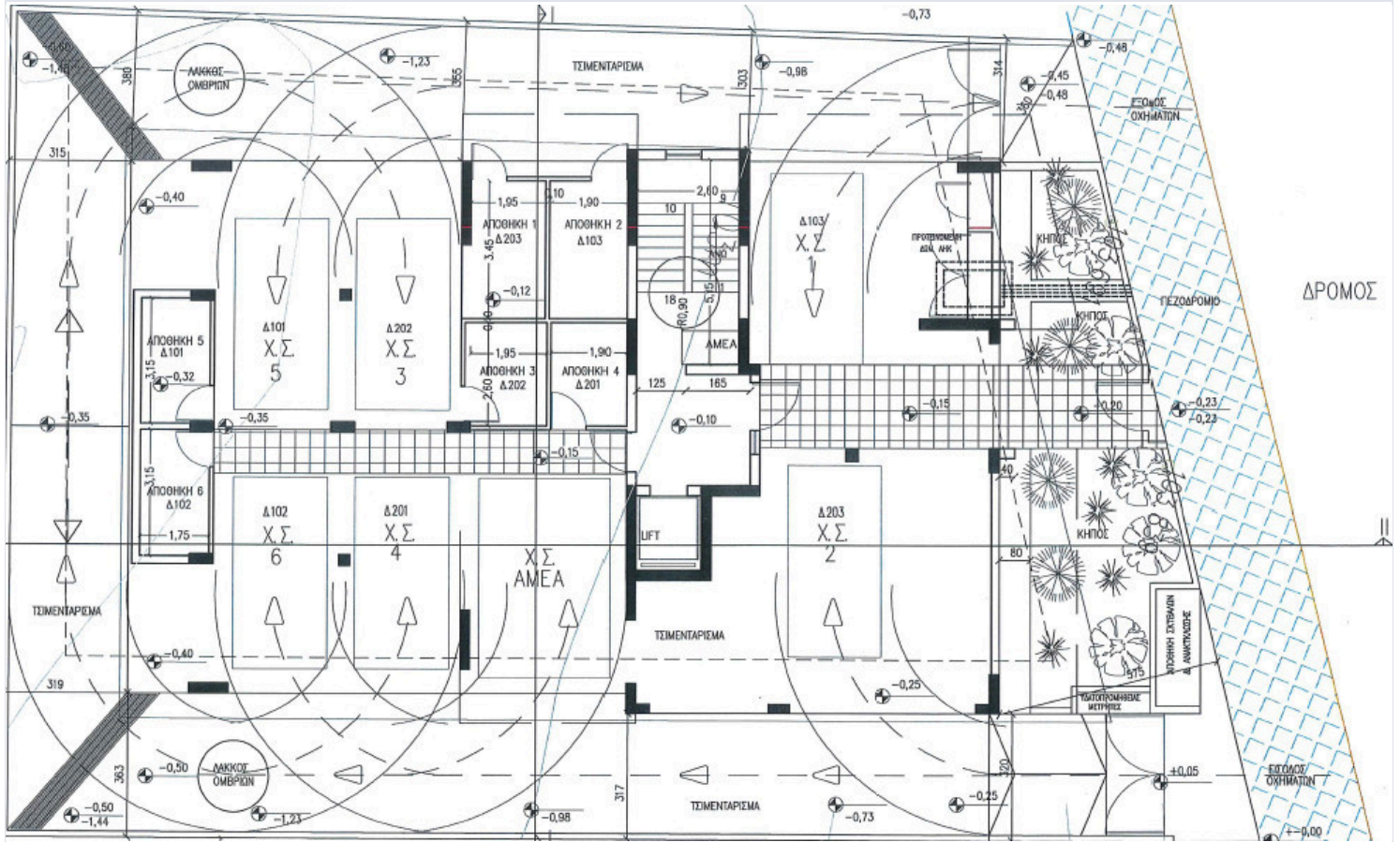
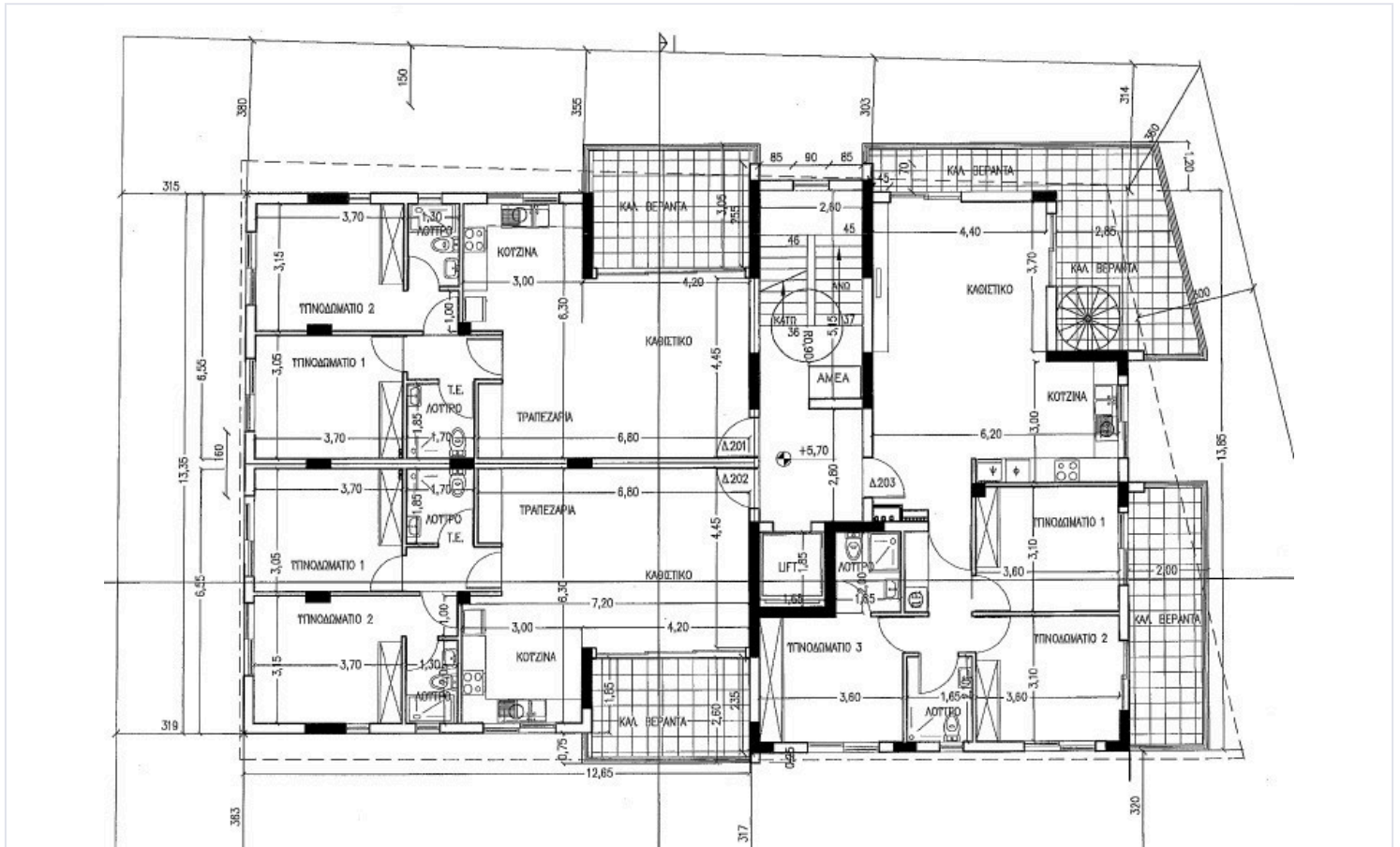
This top floor apartment offers a comfortable internal space of 77.74 m<sup>2</sup>, featuring two spacious bedrooms and two modern bathrooms.

Located in Erimi, this up-and-coming area combines tranquility with convenience. Erimi is known for its peaceful neighborhoods, friendly atmosphere, and easy access to essential amenities. Residents enjoy a relaxed lifestyle, being close to local shops, cafes, and schools. The area also offers excellent transport links, making commuting simple and efficient.

\*Location on map is indicative.



# Floor plans



# Additional information

## Facilities

Aircondition, Provision

Parking, Covered

Solar photovoltaic panels (provision)

Solar water heater

Storage

## Features

Double glazing

## Contact us



**Katerina Athini**

✉ [katerina@cyprusdomus.com](mailto:katerina@cyprusdomus.com)

