

#9281

New Penthouse With Roof Garden For Sale In Erimi Area

 Erimi, Limassol

€355,000 +VAT





Overview

Specifications

Bedrooms

 3

Bathrooms

 3

Covered

 123.94 m²

Type

Apartment

Covered veranda

36 m²

Uncovered veranda

95.92 m²

Status

Off plan

Description

This is a stunning penthouse apartment with an internal space of 123.94 m², offering three bedrooms and three bathrooms.

The apartment is situated on the top floor, offering uninterrupted panoramic views across the surrounding landscapes. Large windows fill the open-plan living and dining area with natural light, creating a warm and welcoming atmosphere.

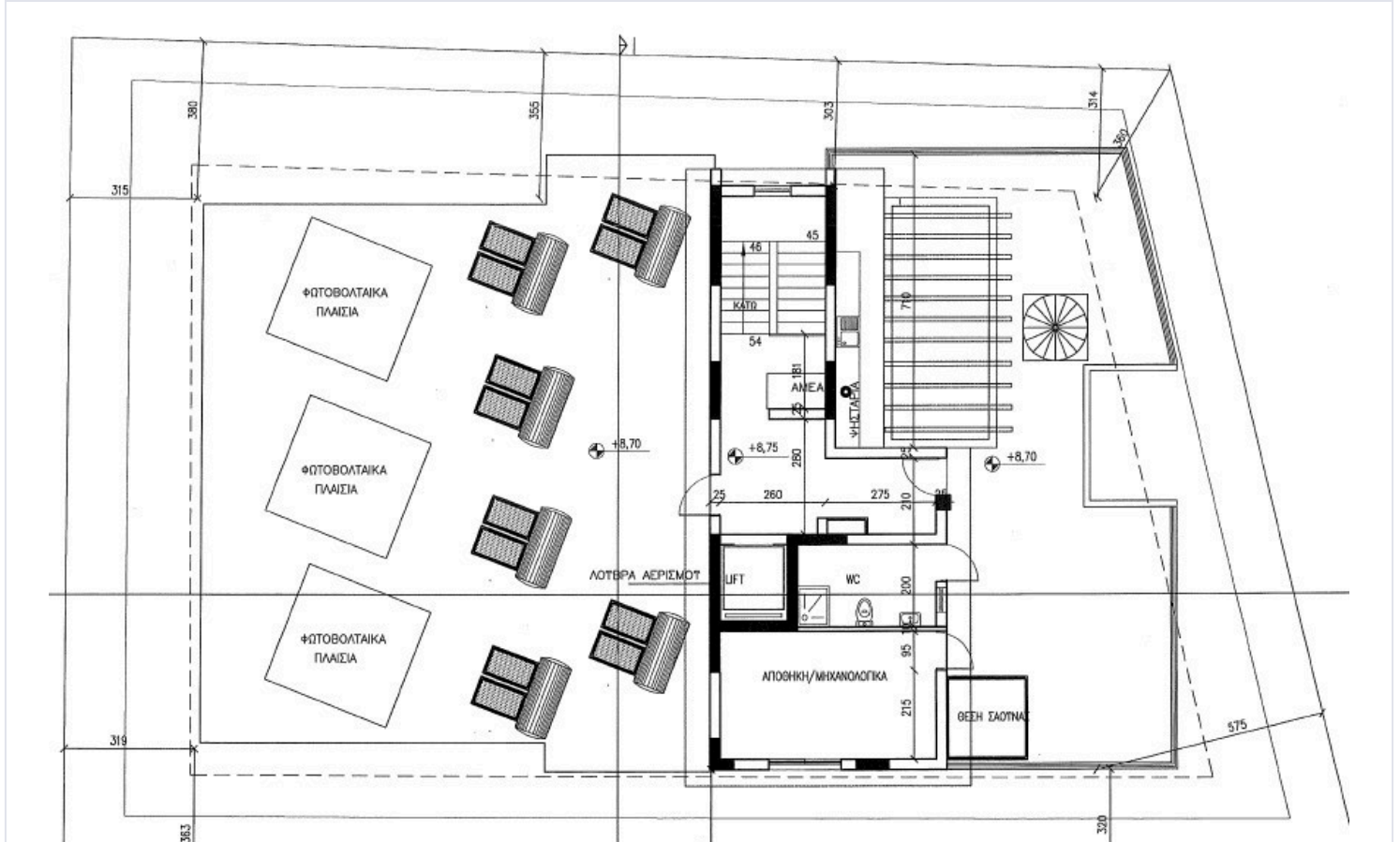
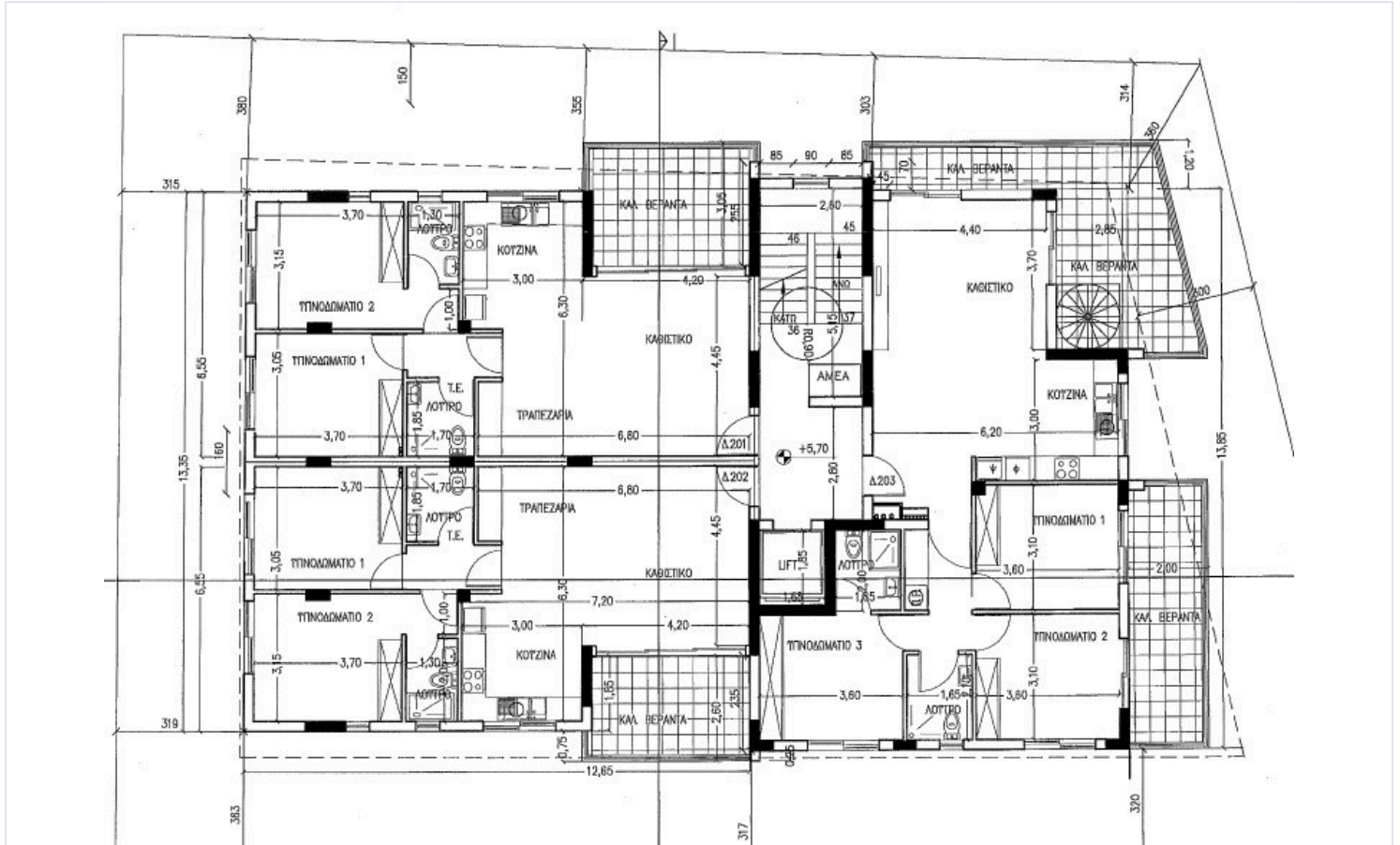
Erimi is a sought-after area known for its peaceful environment and blend of local amenities. Residents enjoy easy access to shops, restaurants, parks, and schools, as well as a close connection to major highways for commuting.

-provision for jacuzzi

*Location on map is indicative.



Floor plans



Additional information

Facilities

Aircondition, Provision

Parking, Covered

Solar photovoltaic panels (provision)

Solar water heater

Storage

Features

Double glazing

Panoramic view

Roof garden

Contact us



Katerina Athini

✉ katerina@cyprusdomus.com

