

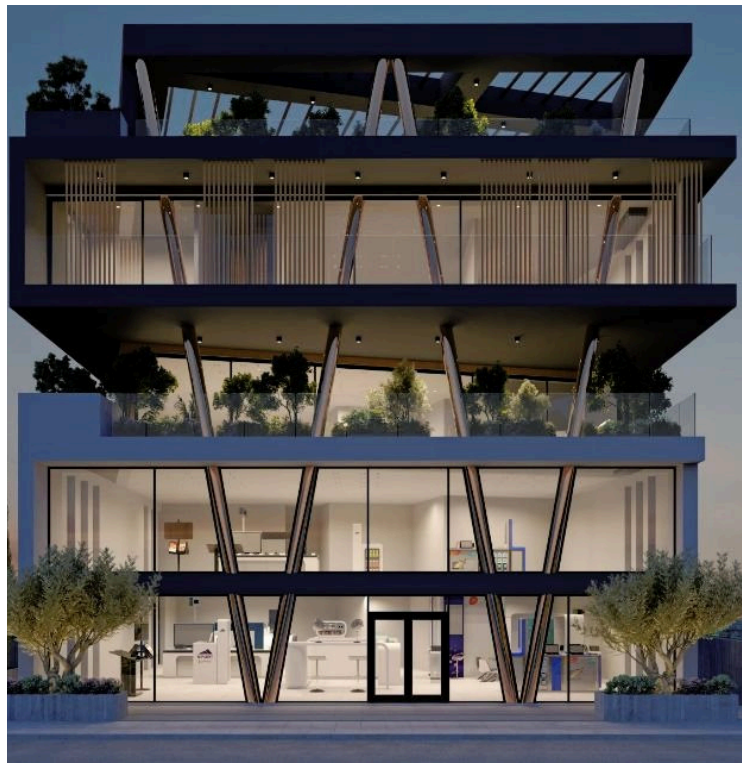
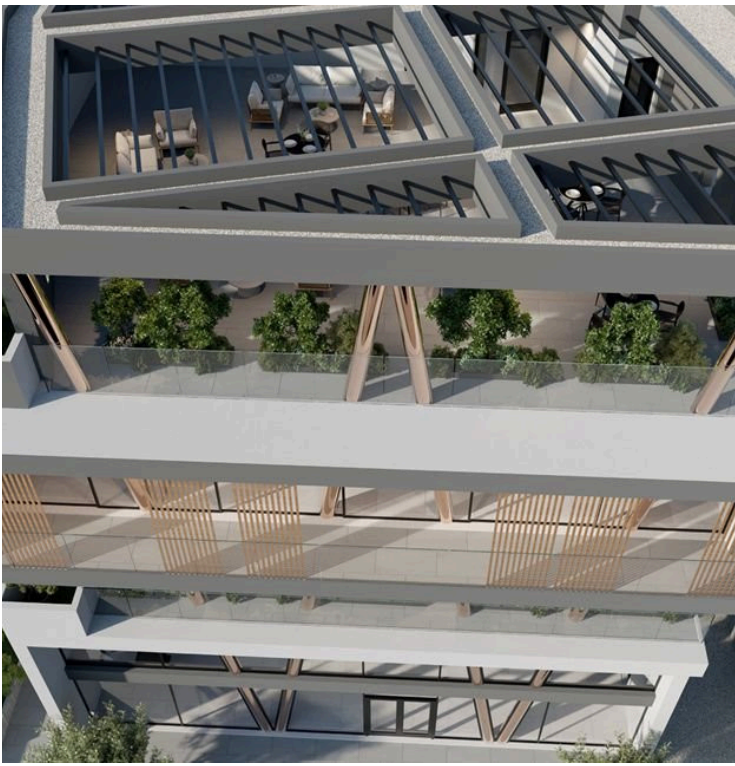
#9324

New Apartment For Rent in A Mix Use Building in Kato Polemidia area

📍 Kato Polemidia, Limassol

€10,000 /month





Overview

Specifications

Covered

 225 m²

Type	Apartment	Status	Under construction
Covered veranda	24 m²		

Description

Available for rent is a spacious apartment currently under construction in the thriving area of Kato Polemidia. With an internal space of 225 square meters, this apartment provides ample room for comfortable living.

Kato Polemidia is a lively residential neighborhood, known for its mix of new developments and established amenities. Public transport and major road links are close by, ensuring quick connections to the city and other key districts.

Residents will enjoy shared access to a well-maintained communal swimming pool, perfect for relaxation or social gatherings.

*Location on map is indicative.



Additional information

Facilities

Parking, Underground

Pool, Communal

Features

Office

Contact us



Katerina Athini

✉ katerina@cyprusdomus.com

