

#9329

# New Apartment For Sale In Palodeia Area

 Palodeia, Limassol

**€250,000** +VAT





# Overview

## Specifications

Bedrooms



2

Bathrooms



2

Covered

75 m<sup>2</sup>

Type

**Apartment**

Covered veranda

**19 m<sup>2</sup>**

Uncovered veranda

**53 m<sup>2</sup>**

Covered parking

**11 m<sup>2</sup>**

Status

**Off plan**

Energy efficiency rating

**A+**

## Description

This modern apartment offers a comfortable internal space of 75 m<sup>2</sup> featuring two well-sized bedrooms and two contemporary bathrooms, designed to provide comfortable living.

The apartment is part of a new development, designed with an A+ energy efficiency rating. This ensures your home is not only environmentally friendly but also helps to reduce energy costs while maintaining a pleasant atmosphere year-round.

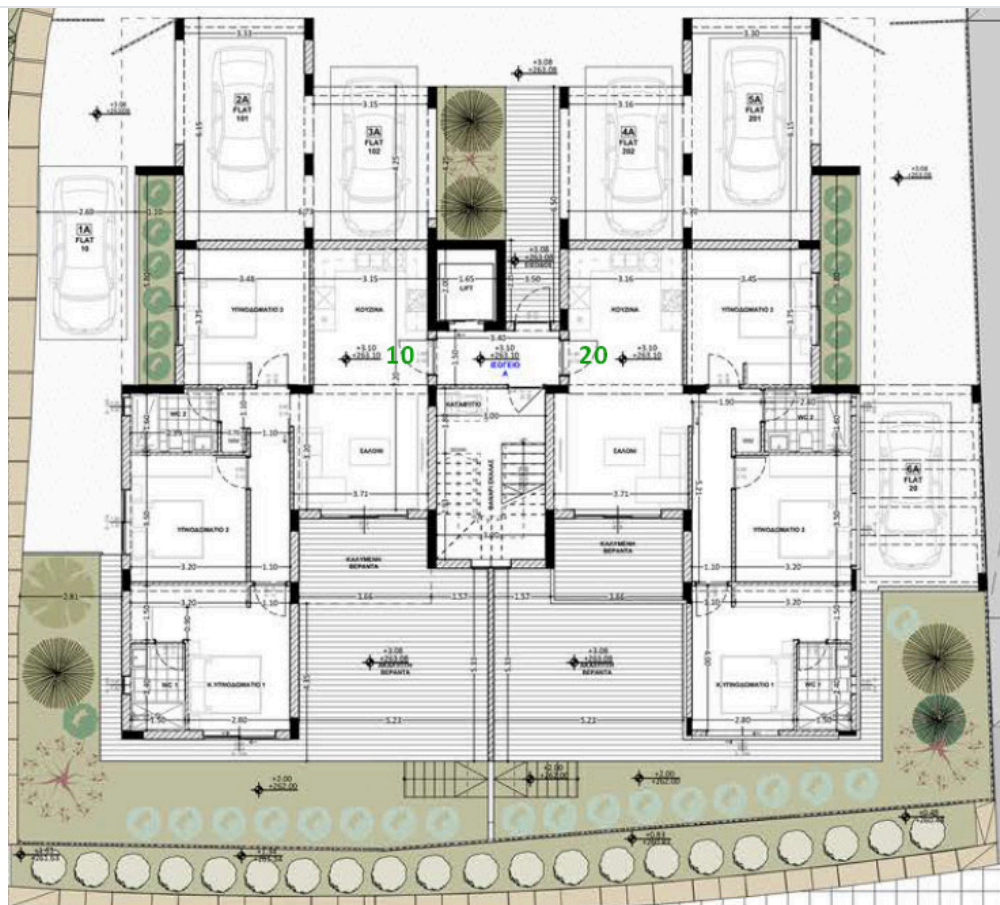
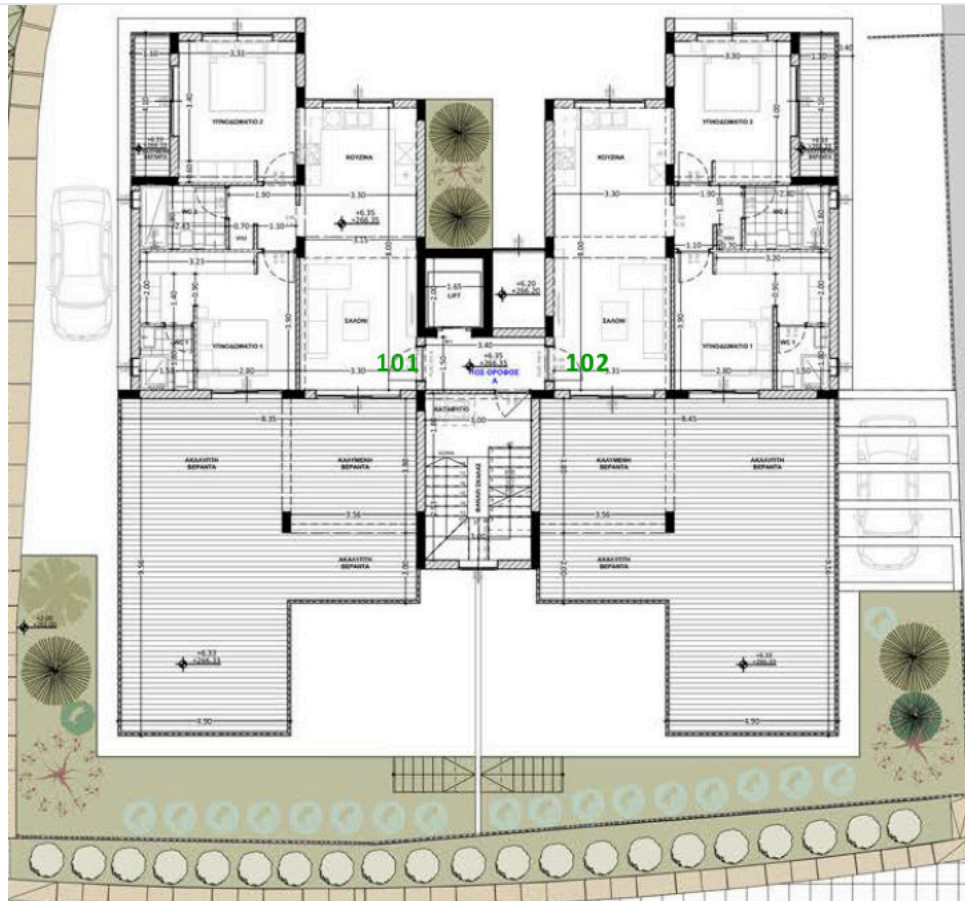
Located in Palodeia, you will enjoy a peaceful and scenic residential area known for its welcoming community and green surroundings. Palodeia offers a quiet lifestyle, with easy access to local amenities, schools, and main roads.

\*Location on map is indicative.





# Floor plans



# Additional information

## Facilities

Aircondition, Provision

Heating, Provision

Parking, Covered

Solar photovoltaic panels

Solar water heater

## Features

Double glazing

Fly screens

Pressurized water system

Thermal insulation

Veranda, large

## Contact us



**Katerina Athini**

✉ [katerina@cyprusdomus.com](mailto:katerina@cyprusdomus.com)

