

#9330

# New Penthouse For Sale In Palodeia Area

 Palodeia, Limassol

**€260,000** +VAT





# Overview

## Specifications

Bedrooms


 2

Bathrooms

 2

Covered

 75 m<sup>2</sup>

Type	Apartment	Status	Off plan
Covered veranda	19 m <sup>2</sup>	Energy efficiency rating	 A+
Covered parking	11 m <sup>2</sup>		

## Description

This modern penthouse apartment offers a comfortable internal space of 75 m<sup>2</sup> featuring two well-sized bedrooms and two contemporary bathrooms, designed to provide comfortable living.

The apartment is part of a new development, designed with an A+ energy efficiency rating. This ensures your home is not only environmentally friendly but also helps to reduce energy costs while maintaining a pleasant atmosphere year-round.

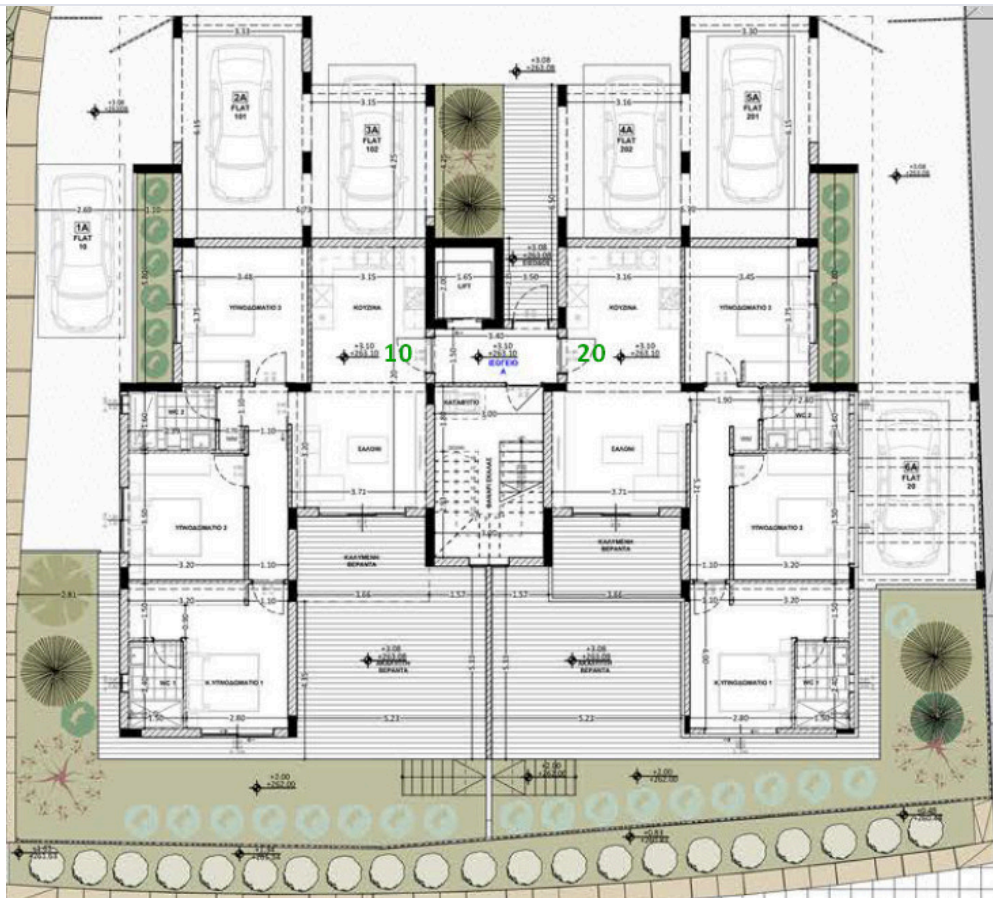
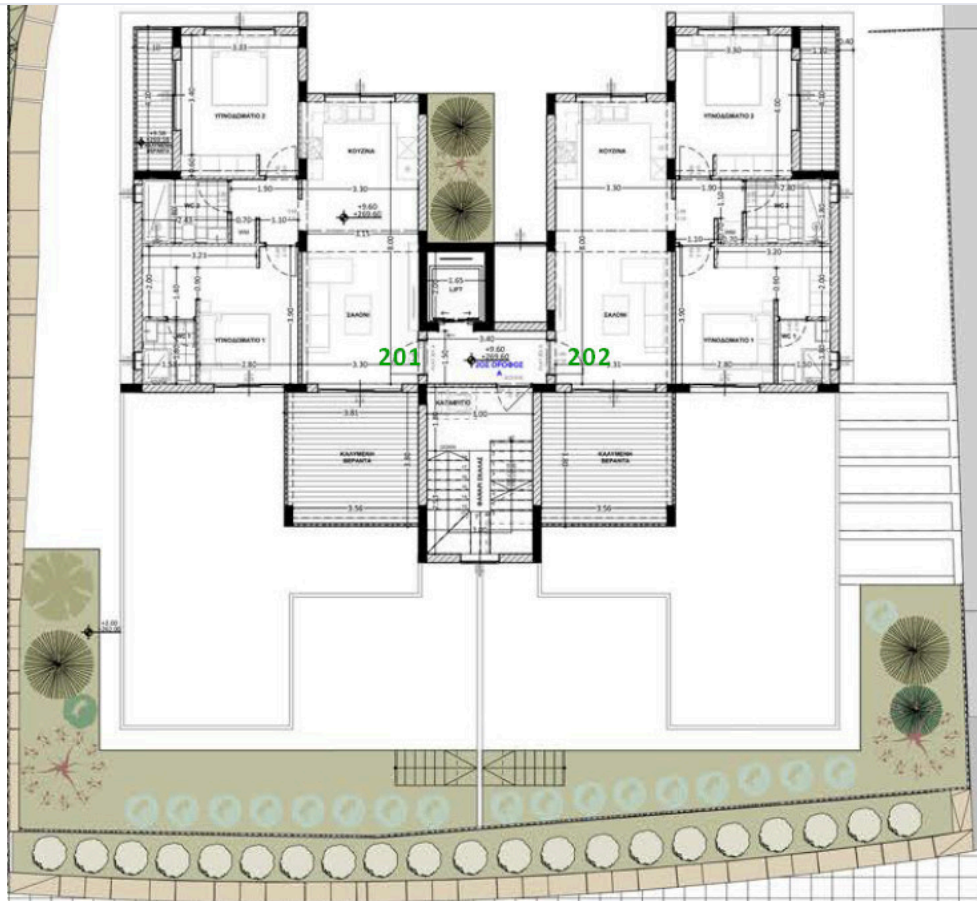
Located in Palodeia, you will enjoy a peaceful and scenic residential area known for its welcoming community and green surroundings. Palodeia offers a quiet lifestyle, with easy access to local amenities, schools, and main roads.

\*Location on map is indicative.





# Floor plans



# Additional information

## Facilities

Aircondition, Provision

Heating, Provision

Parking, Covered

Solar photovoltaic panels

Solar water heater

## Features

Double glazing

Fly screens

Pressurized water system

Thermal insulation

Veranda, large

## Contact us



**Katerina Athini**

✉ [katerina@cyprusdomus.com](mailto:katerina@cyprusdomus.com)

