

#9331

New Apartment For Sale In Palodeia Area

 Palodeia, Limassol

€250,000 +VAT





Overview

Specifications

Bedrooms


 2

Bathrooms

 2

Covered

 75 m²

Type	Apartment	Status	Off plan
Covered veranda	12 m ²	Energy efficiency rating	 A+
Covered parking	11 m ²		

Description

This modern apartment offers a comfortable internal space of 75 m² featuring two well-sized bedrooms and two contemporary bathrooms, designed to provide comfortable living.

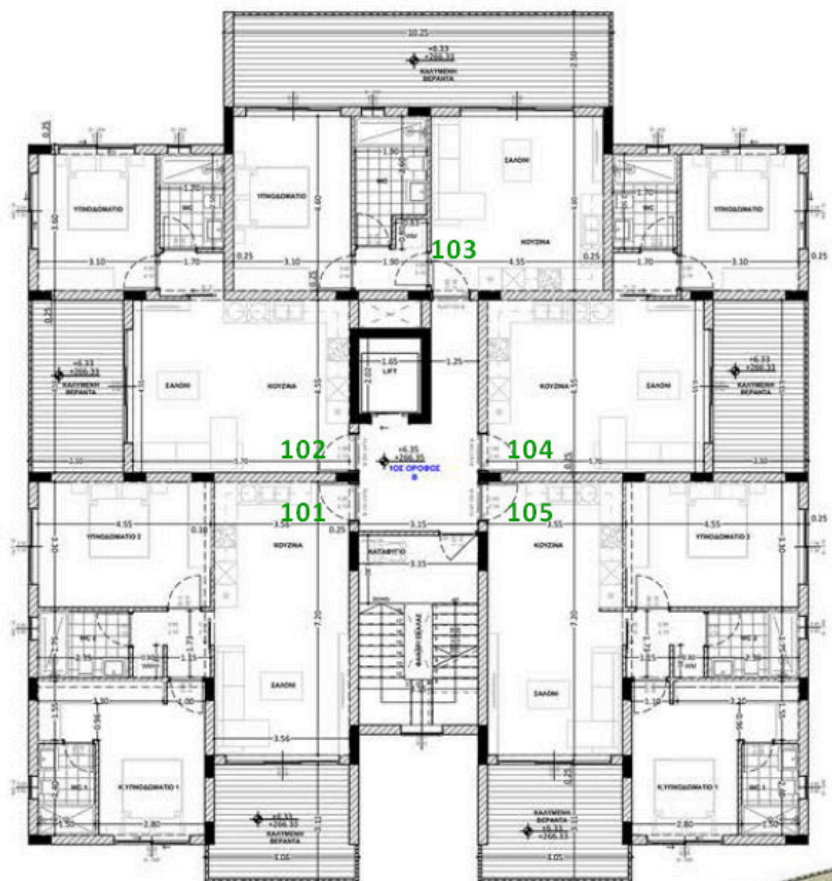
The apartment is part of a new development, designed with an A+ energy efficiency rating. This ensures your home is not only environmentally friendly but also helps to reduce energy costs while maintaining a pleasant atmosphere year-round.

Located in Palodeia, you will enjoy a peaceful and scenic residential area known for its welcoming community and green surroundings. Palodeia offers a quiet lifestyle, with easy access to local amenities, schools, and main roads.

*Location on map is indicative.



Floor plans



Additional information

Facilities

Aircondition, Provision

Heating, Provision

Parking, Covered

Solar photovoltaic panels

Solar water heater

Features

Double glazing

Fly screens

Pressurized water system

Thermal insulation

Veranda, large

Contact us



Katerina Athini

✉ katerina@cyprusdomus.com

