

#9467

Two Bedroom Luxury apartment for rent in Eden Roc Block B 4,900 Per month

📍 Germasogeia Tourist Area, Limassol

€4,900 /month





Overview

Specifications

Bedrooms

 2

Bathrooms

 2

Covered

 167.1 m²

Type	Apartment
Showers	1
Toilets	2
Covered veranda	46.3 m²
Status	Used

Year of construction	2023
Furnished	Fully furnished
Structure	Concrete
Facade	Textured paint

Description

Rent: 4,900 per month including communal expenses, Deposits: Two months.

Eden Roc Residence Block B

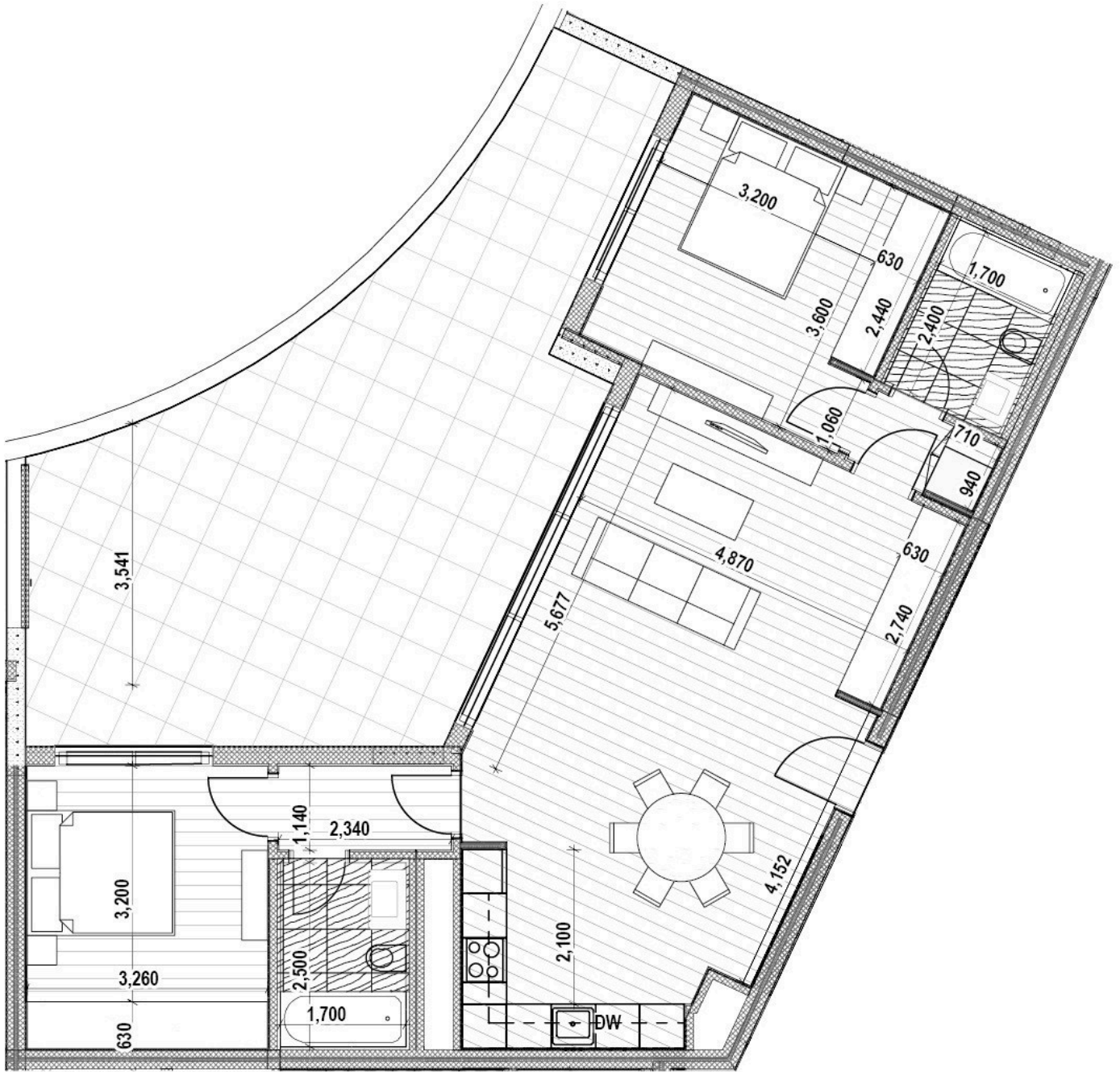
Luxury residential complex in central Limassol, in a privileged and quite neighborhood of the tourist area, approximately half a kilometre from the seafront. The building reaches up to 4 storeys in height. The buildings are set around the landscaped garden, located in the center of the project. The design is influenced by elements from both the natural and man-made world. Wide horizontal bands form continuous balustrades that wrap around the blocks at each level, emphasizing the horizontal nature of the development. The residents will enjoy the privacy of the gated compound with outdoor pool, gym and covered parking.

MAJOR BENEFITS

- landmark architecture from one of London's leading architects;
- 500 meters from sandy beach and city amenities of Limassol's tourist area;
- internal infrastructure: outdoor pool, gym, sauna, covered parking, large landscaped gardens;
- large balconies with private planters and green areas;
- penthouses with private pools;
- high ceilings (3.15 m);
- high standard finishes (parquet floors, high doors of 2.4 m, security entrance doors, thermal aluminum window frames, top standard in-built furniture, and sanitary ware);
- water underfloor heating and VRV air conditioning.



Floor plans



Additional information

Facilities

Aircondition, Central system

Heating, Underfloor

Parking, Covered

Pool, Communal

Sauna

Storage

Features

24-hour security

Balcony

Bath

Bathroom underfloor heating

CCTV

City view

Connected to electric mains

Courtyard

Easy access to highway

Easy access to main roads

En suite bathroom

Entrance gate, automated

Entrance hall

Garden, large

Guest WC

High ceilings

Internet

Modern design

Open plan

Parquet flooring

Pool view

Quiet area

Sound insulation

Thermal insulation

Utility room

Walking distance to beach

Wooden flooring

Distances

Amenities

 200 m

Airport

 58 km

Sea

 300 m


Public transport

 100 m

Contact us



Andreas Chouloudes

 (+357) 94098260

 andreas@cyprusdomus.com

