

#9500

New Apartments For Sale In Tsiflikoudia Area

📍 Tsiflikoudia, Limassol

€588,000 +VAT





Overview

Specifications

Bedrooms



2

Bathrooms



2

Covered



67 m²

Type

Apartment

Covered veranda

13 m²

Status

Off plan

Energy efficiency rating

 **A+**

Description

This thoughtfully designed apartment with an internal area 66 m², features two bedrooms, one bathroom, and 1 guest w/c. The property also includes a basement area, adding extra storage or parking options.

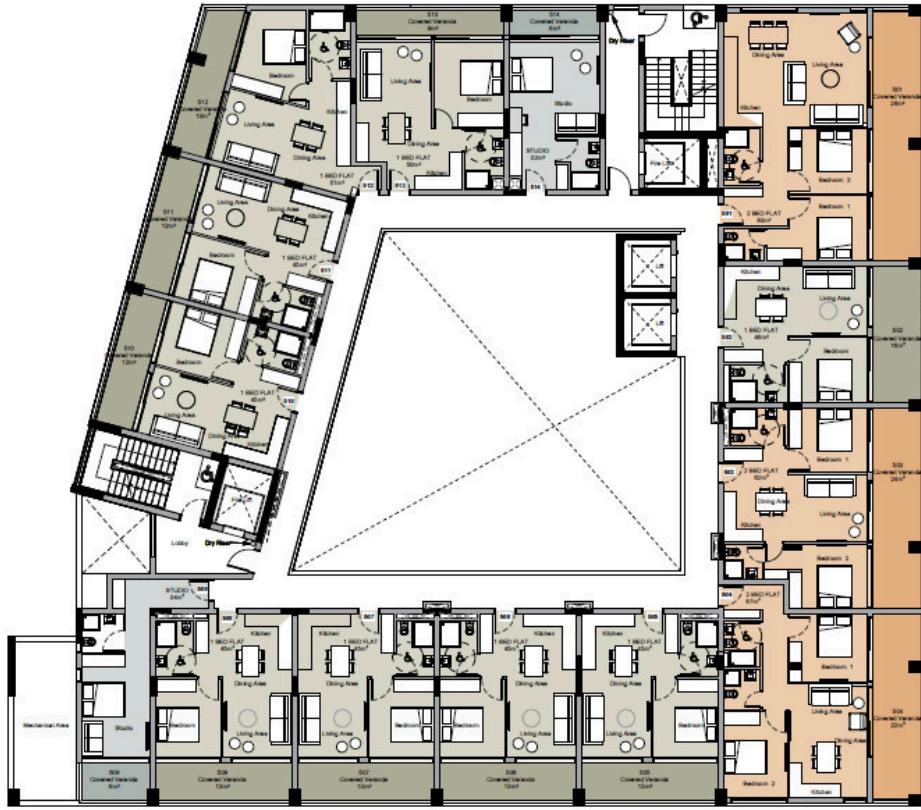
The apartment is located in the desirable area of Tsiflikoudia, a vibrant and evolving neighborhood known for its blend of urban convenience and relaxed atmosphere. Residents enjoy close proximity to a variety of amenities, including shops, cafes, schools, and public transport links.

With an A+ energy efficiency rating, this apartment ensures lower energy costs and a smaller environmental footprint.

*Location on map is indicative.



Floor plans



Additional information

Facilities

Parking, Covered

Features

Ceramic tiles

Laminate flooring

Modern design

Near amenities

Thermal insulation

Contact us



Katerina Athini

✉ katerina@cyprusdomus.com

