

#9582

New Contemporary Design Office For Rent In Kapsalos Area

📍 Kapsalos, Limassol

€13,338 +VAT /month






Overview

Specifications

Covered

 206 m²

| | | | |
|-----------------|-------------------------|--------------------------|--|
| Type | Office | Status | Under construction |
| Covered veranda | 41 m² | Energy efficiency rating |  A |

Description

This beautifully designed project is simply a masterpiece of contemporary architecture at its best.

Designed by one of the most renowned leading design studios in London.

The five-storey development consists of 6 luxurious offices with one on each floor, providing ample space and functional structures.

Spacious layouts carefully thought out to compliment an effective professional working environment.

Each office is designed with nothing but perfection in mind, carefully selected European brands and high standards of finish.

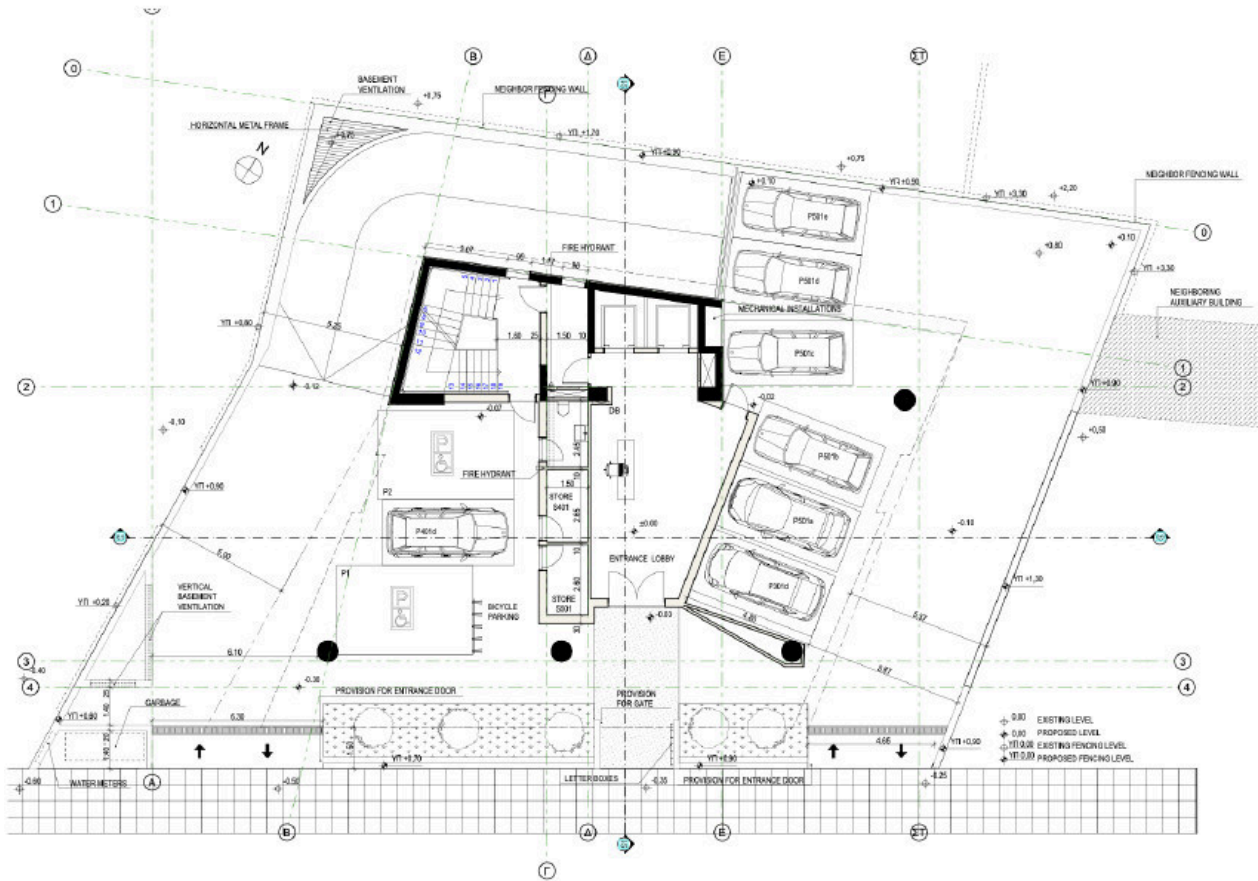
A modern luxury development that defines a design through sophisticated qualities and high-end style.

This is where balance, color, movement and shape blend together as one to offer a prestigious professional workspace that promotes only success and accomplishment.

*Location on the map is indicative.



Floor plans



Additional information

Facilities

Aircondition, Central system

Parking, Underground

Features

CCTV

Double glazing

Electric car charger

Fiber optics

Fire detector

High ceilings

Lobby

Reception

Thermal insulation

Contact us



Vassilis Papadopoulos

☎ (+357) 99662023

✉ info@cyprusdomus.com

