

#9631

New Detached House For Sale in Erimi Area

📍 Erimi, Limassol

€450,000 +VAT





Overview

Specifications

Bedrooms



4

Bathrooms



2

Covered



205 m²

Type	House	Plot	229 m ²
Toilets	1	Status	Off plan

Description

This contemporary home boasts an impressive internal space of 205 square meters, designed to offer both comfort and style. With four bedrooms two modern bathrooms and 1 guest w/c, this property is perfect for families looking for room to grow.

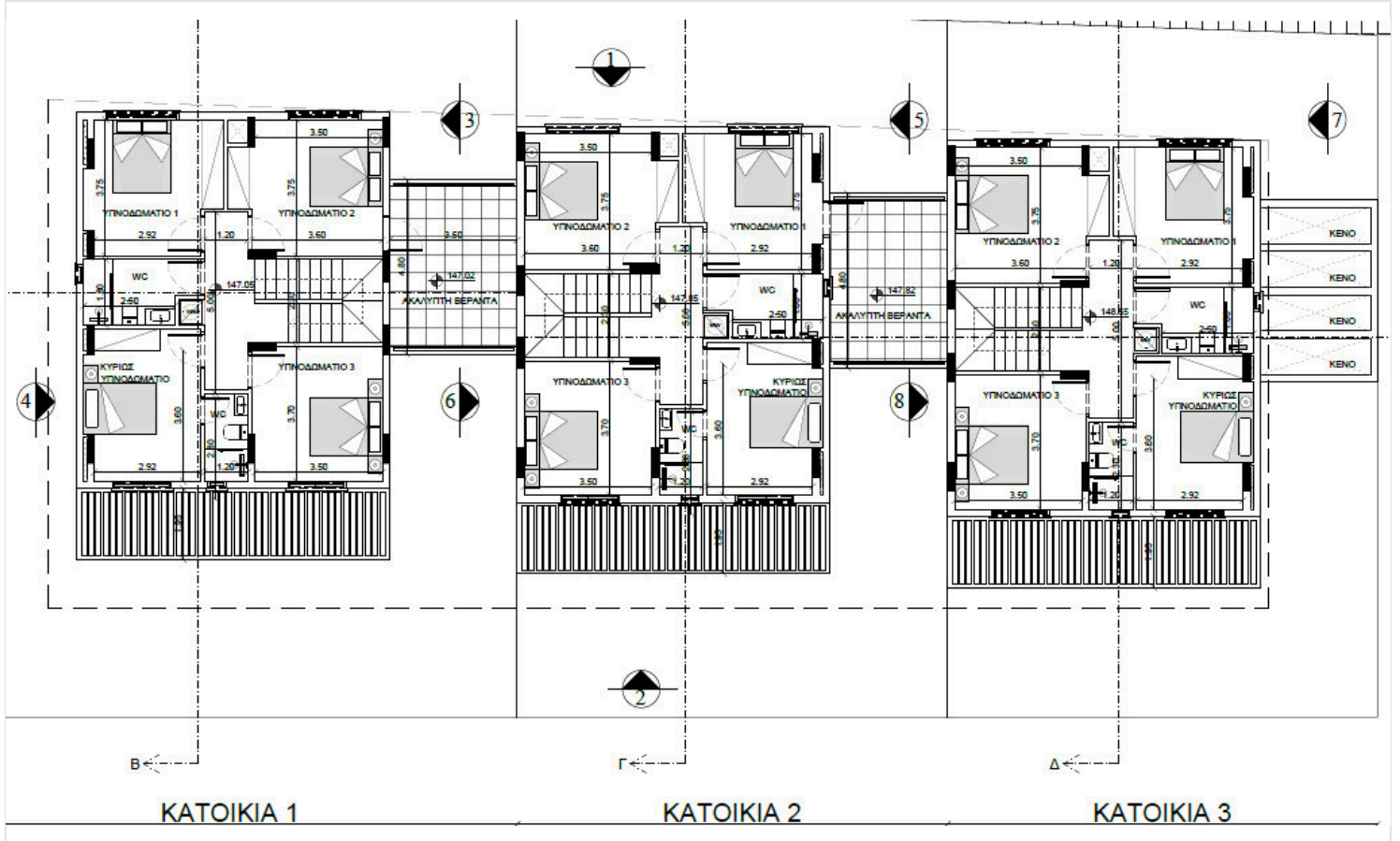
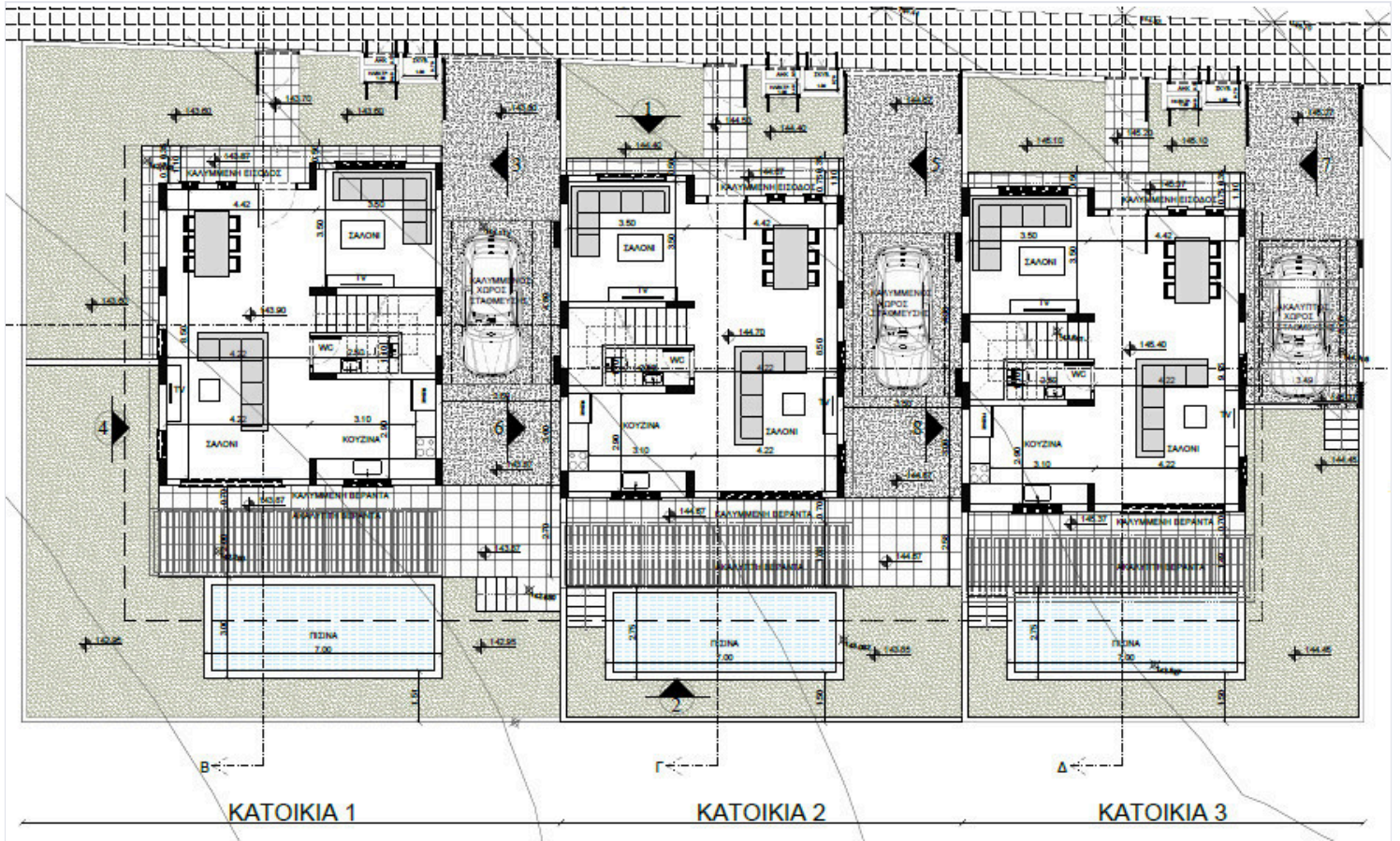
Erimi is known for its picturesque landscapes and friendly community atmosphere. The area is surrounded by lush greenery, providing a serene backdrop for daily living. Residents enjoy easy access to local amenities, including shops, schools, and recreational facilities, making it an ideal place for both relaxation and convenience.

-Showing house 2

*Location on map is indicative.



Floor plans



Additional information

Facilities

Aircondition, Provision

Heating, Provision

Parking, Covered

Pool, Optional

Solar water heater

Features

Ceramic tiles

Double glazing

Laminate flooring

Pressurized water system

Shutters, electric (provision)

Contact us



Katerina Athini

✉ katerina@cyprusdomus.com

