

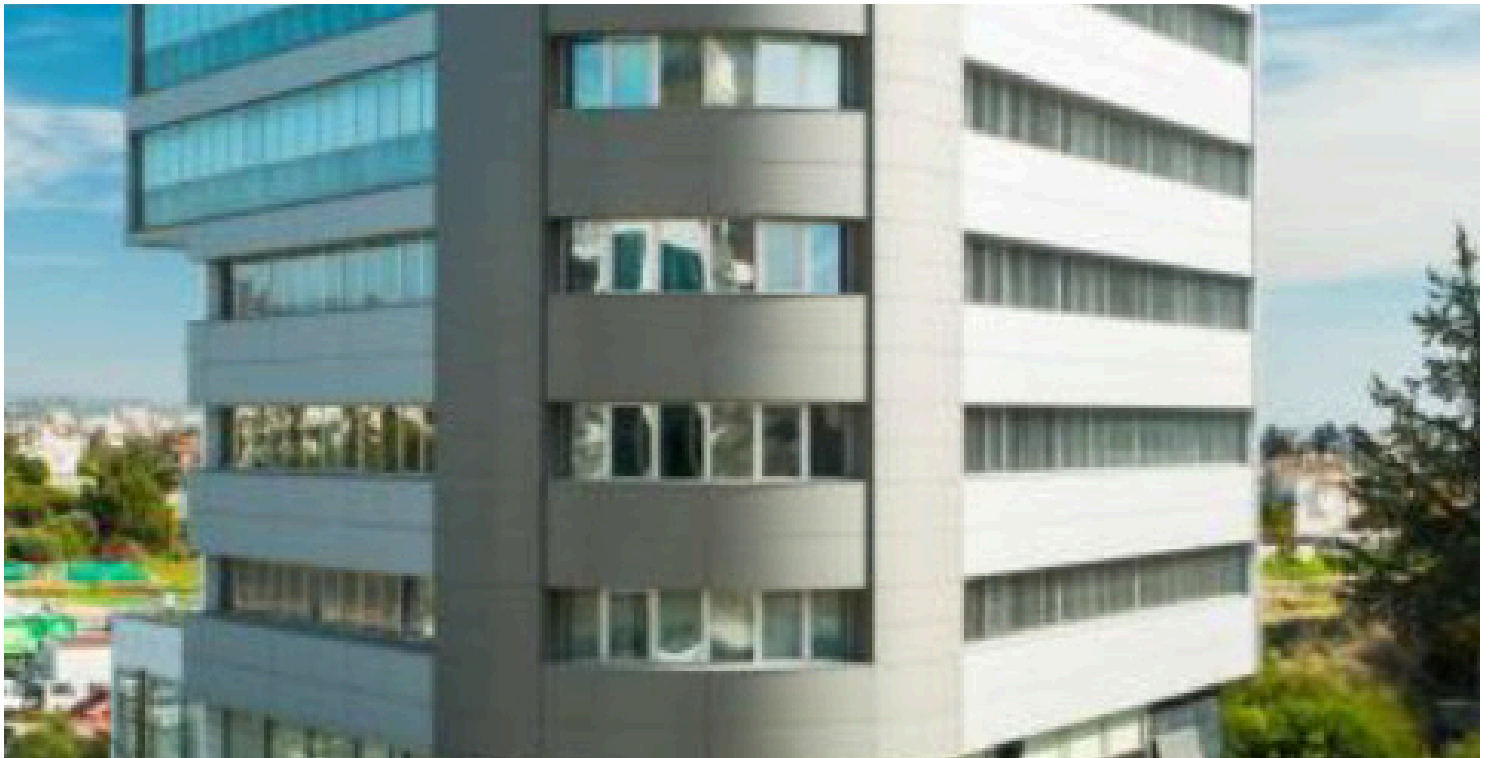
#9663

Office For Rent In Linopetra Area

📍 Linopetra, Limassol

€15,300 /month





Overview

Specifications

Covered

 **434 m²**

Type

Office

Toilets

4

Description

Now available for rent, this spacious office offers a total internal area of 434 m², ideal for businesses seeking a professional and comfortable workspace. The office features a central AC system, ensuring a pleasant atmosphere for both employees and clients throughout the year.

Located in Linopetra, this property benefits from a strategic position in one of the area's most established commercial zones. Linopetra is known for its modern infrastructure, convenient amenities, and vibrant business community. The area hosts a mix of shops, eateries, banks, and services, making it a practical and attractive location for any growing company.

This property is an excellent choice for organizations looking for a professional address with ample space and convenience in a prime business area.

Location on map is indicative.



Additional information

Facilities

Aircondition, Central system

Parking, Underground

Features

Easy access to highway

Raised floors

Server room

Contact us



Katerina Athini

✉ katerina@cyprusdomus.com

