

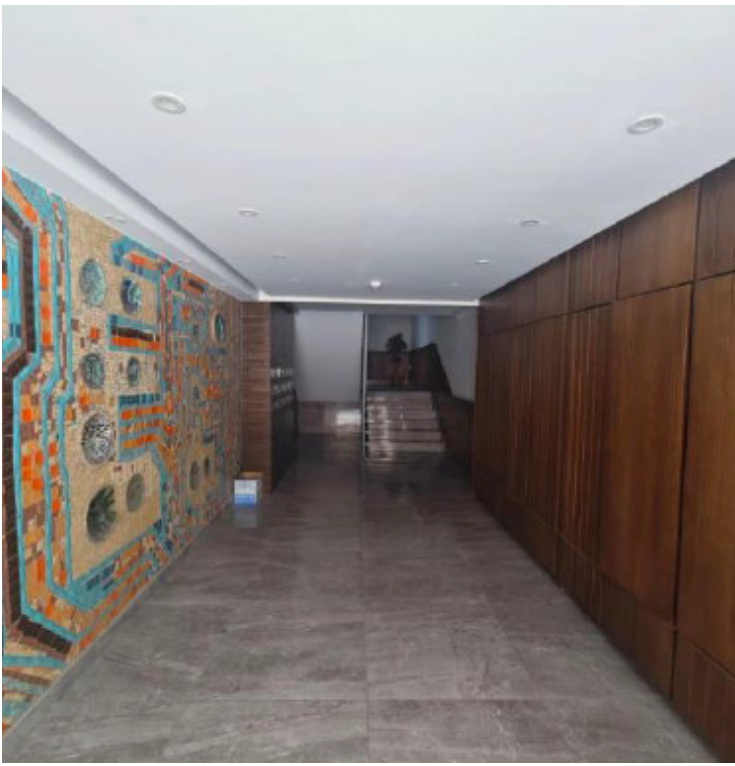
#9665

Office For Rent In Linopetra Area

📍 Linopetra, Limassol

€5,000 /month





Overview

Specifications

Covered

 222 m²

Type	Office	Toilets	2
------	---------------	---------	----------

Description

Available for rent, this spacious office offers 222 square meters of well-designed internal space. The office is located in the popular area of Linopetra, known for its easy access and excellent infrastructure. Linopetra is a highly sought-after business neighborhood, offering a comfortable and professional environment with a mix of modern developments and established amenities.

Large windows fill the space with natural light, creating a welcoming and productive atmosphere for your team. The property is positioned close to main roads, making it simple for clients and employees to commute. Essential services such as banks, restaurants, cafes, and shops are just a short walk away, ensuring convenience throughout the working day.

With its prime location and flexible space, this office provides an excellent opportunity for businesses looking to establish or expand their presence in Linopetra.

*Location on map is indicative.



Additional information

Facilities

Aircondition, Split system

Features

Near amenities

Near bus route

Contact us



Katerina Athini

✉ katerina@cyprusdomus.com

