

#9695

New Penthouses For Sale In Kato Polemidia Area

📍 Kato Polemidia, Limassol

€592,000 +VAT





Overview

Specifications

Bedrooms



3

Bathrooms



2

Covered



103 m²

Type

Apartment

Status

Off plan

Covered veranda

22 m²

Description

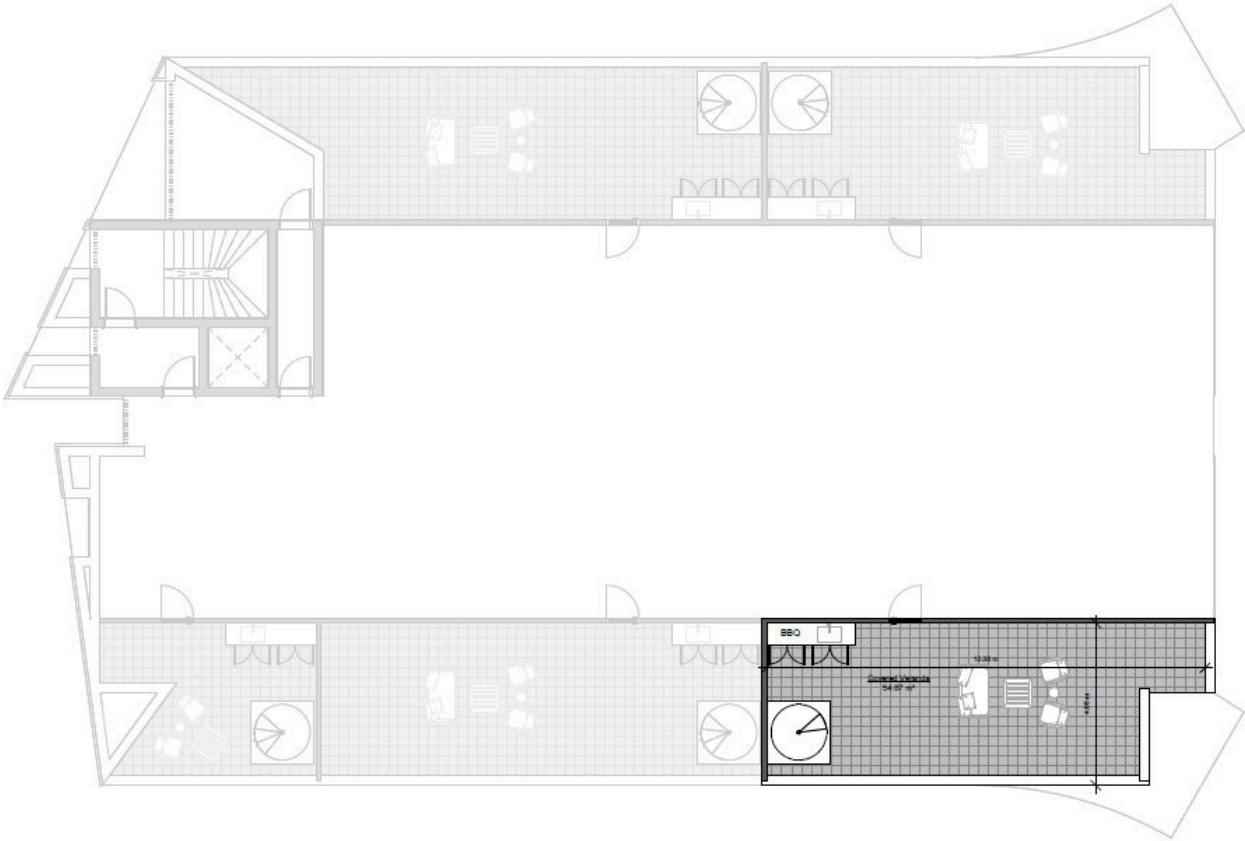
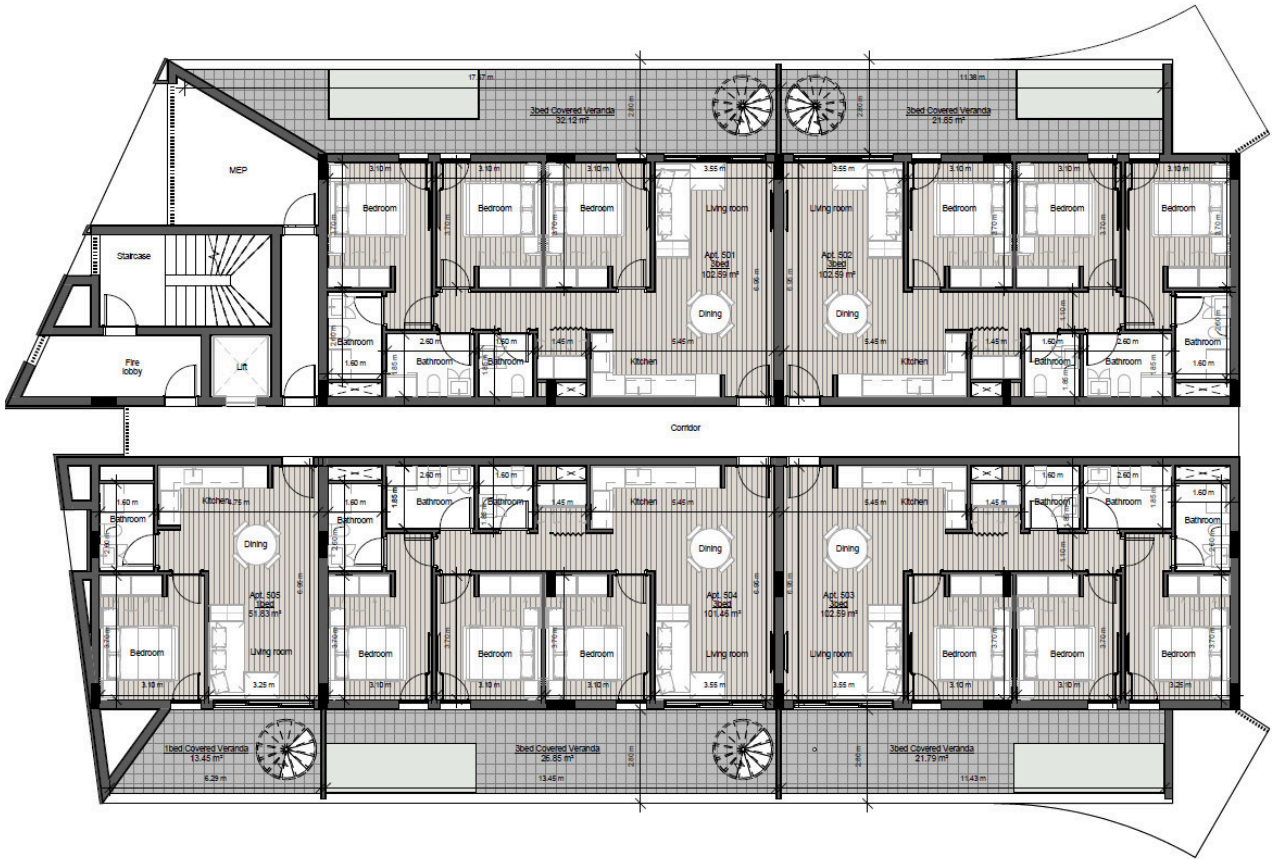
Located in a peaceful yet well-connected area of Limassol, this is a modern residential development comprising four distinctive blocks and a curated selection of 1, 2, and 3-bedroom apartments.

Set within a growing neighborhood, it provides residents with convenient access to key road networks, educational institutions, local shops, and essential services. Its strategic location ensures seamless connectivity to Limassol's city center and coastline, while maintaining a sense of calm and residential privacy.

*Location on map is indicative.



Floor plans



Additional information

Facilities

Childrens playground

Gym

Parking, Covered

Pool, Communal

Sauna

Solar water heater

Features

Barbeque

Concierge

High ceilings

Roof garden

Contact us



Katerina Athini

✉ katerina@cyprusdomus.com

