

#9748

New Semi-Detached Houses For Sale In Souni Area

📍 Souni, Limassol

€325,000 +VAT





Overview

Specifications

Bedrooms



3

Bathrooms



2

Covered



100 m²

Type

House

Covered veranda

18 m²

Plot

325 m²

Status

Off plan

Description

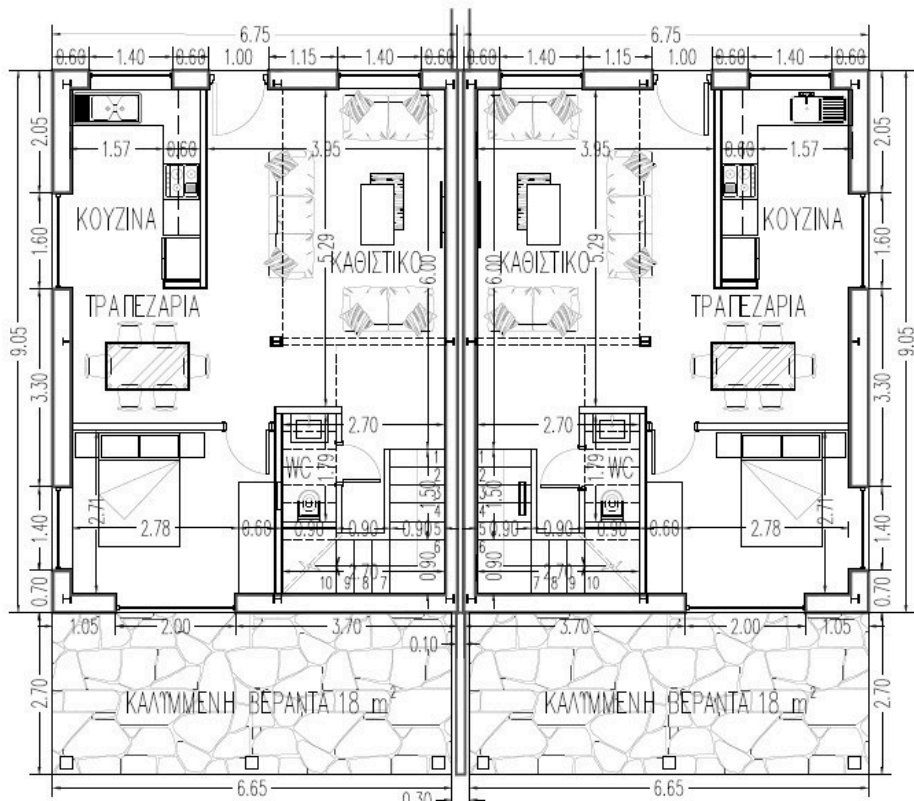
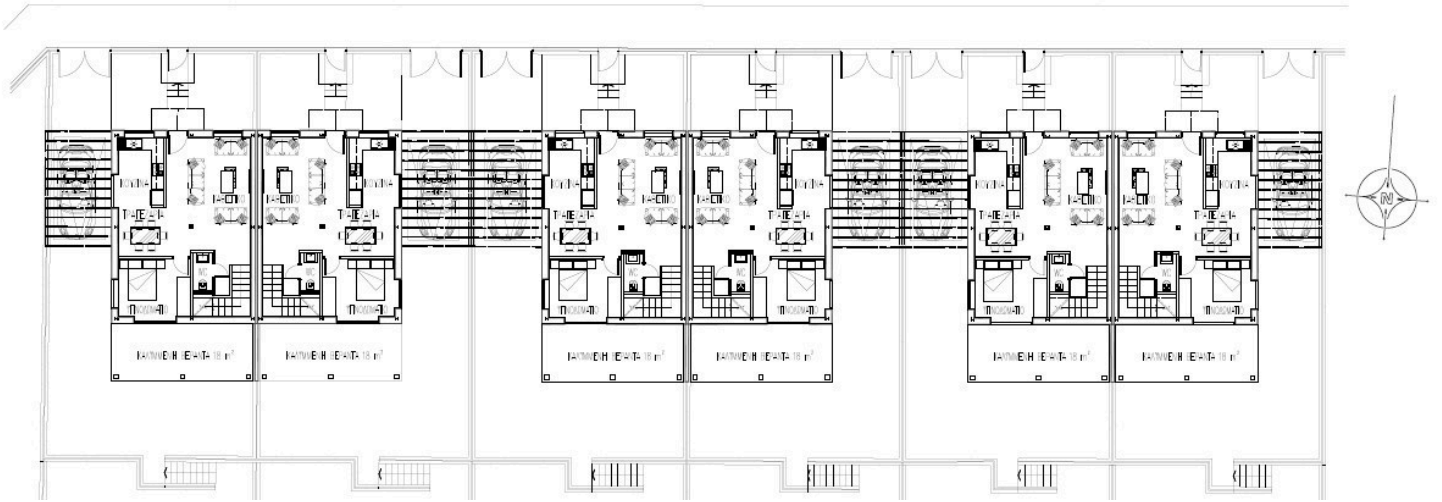
With an internal space of 100 square meters, it features three bedrooms and two well-appointed bathrooms, making it a great choice for families or couples alike.

Located in the beautiful area of Souni, this property places you in a tranquil setting surrounded by nature. Souni is known for its peaceful atmosphere, green landscapes, and a sense of privacy that allows residents to enjoy a relaxed lifestyle. The area is ideal for those who appreciate outdoor activities, fresh air, and a close-knit community feel, while still being just a short drive from local amenities and the coastline.

*Location on map is indicative.



Floor plans



KATOΦEIS IΣOΓEIOY

OPTION 2



Additional information

Facilities

Aircondition, Split system

Heating, Provision

Pool, Optional

Solar photovoltaic panels

Solar water heater

Features

Ceramic tiles

Contact us



Katerina Athini

✉ katerina@cyprusdomus.com

