

#9790

# New Apartments For Sale In Tsiflikoudia Area

📍 Tsiflikoudia, Limassol

€539,000 +VAT





# Overview

## Specifications

Bedrooms



1

Bathrooms



1

Covered

69 m<sup>2</sup>

Type

**Apartment**

Covered veranda

**18 m<sup>2</sup>**

Status

**Off plan**

Energy efficiency rating

**A+**

## Description

This thoughtfully designed apartment with an internal area 69 m<sup>2</sup>, features one bedroom and one bathroom. The property also includes a basement area, adding extra storage or parking options.

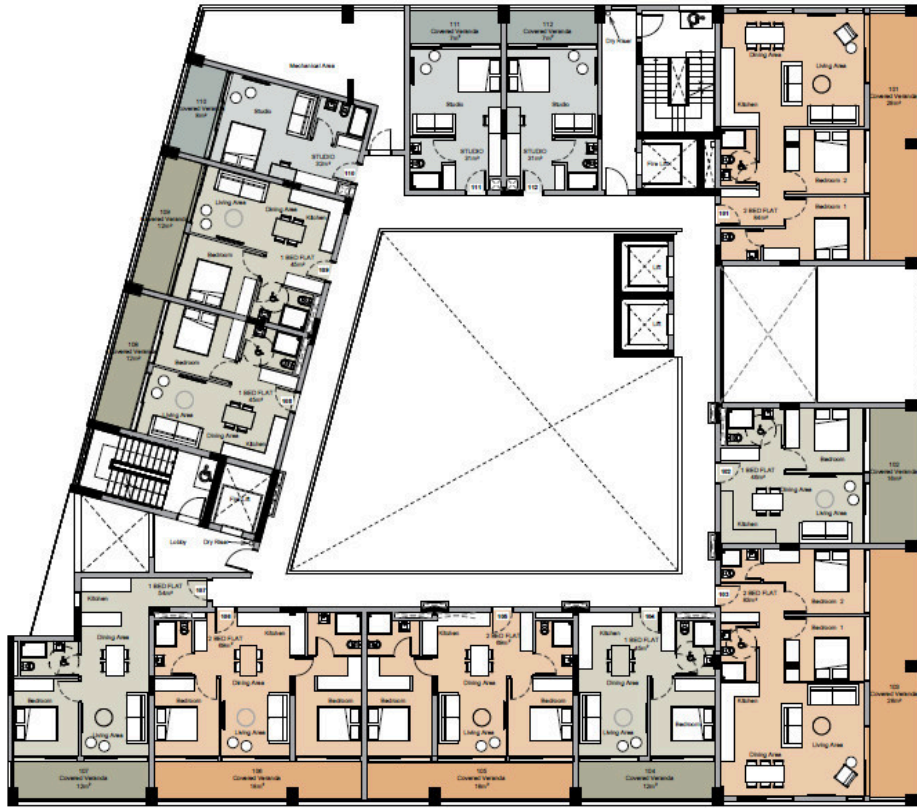
The apartment is located in the desirable area of Tsiflikoudia, a vibrant and evolving neighborhood known for its blend of urban convenience and relaxed atmosphere. Residents enjoy close proximity to a variety of amenities, including shops, cafes, schools, and public transport links.

With an A+ energy efficiency rating, this apartment ensures lower energy costs and a smaller environmental footprint.

\*Location on map is indicative.



# Floor plans



# Additional information

## Facilities

Parking, Covered

## Features

Ceramic tiles

Laminate flooring

Modern design

Near amenities

Thermal insulation

## Contact us



**Katerina Athini**

✉ [katerina@cyprusdomus.com](mailto:katerina@cyprusdomus.com)

