

#9791

New Apartments For Sale In Tsiflikoudia Area

📍 Tsiflikoudia, Limassol

€554,000 +VAT





Overview

Specifications

Bedrooms



1

Bathrooms



1

Covered

69 m²

Type

Apartment

Covered veranda

18 m²

Status

Off plan

Energy efficiency rating

A+

Description

This thoughtfully designed apartment with an internal area 69 m², features one bedroom and one bathroom.. The property also includes a basement area, adding extra storage or parking options.

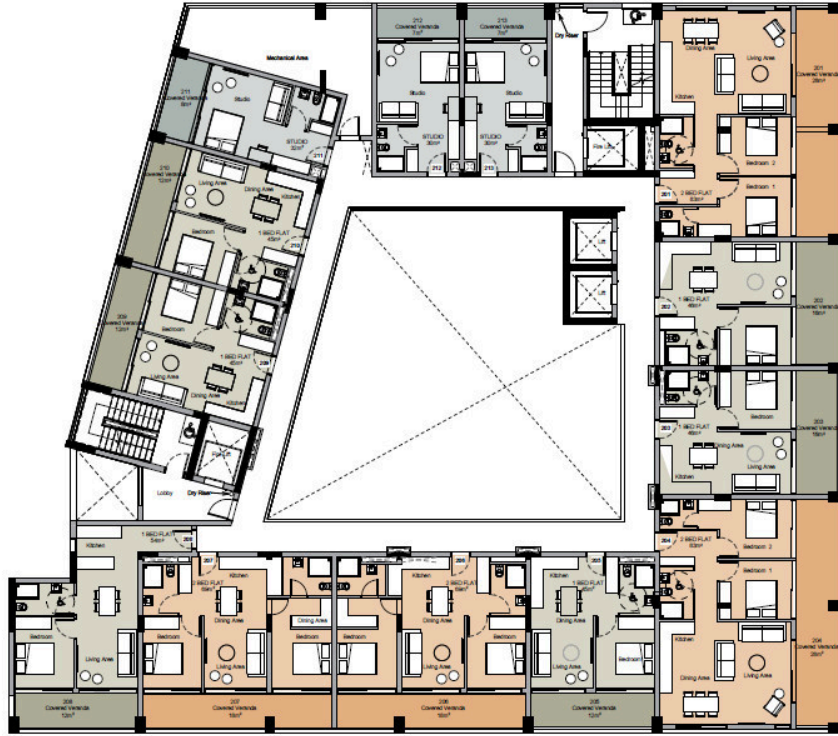
The apartment is located in the desirable area of Tsiflikoudia, a vibrant and evolving neighborhood known for its blend of urban convenience and relaxed atmosphere. Residents enjoy close proximity to a variety of amenities, including shops, cafes, schools, and public transport links.

With an A+ energy efficiency rating, this apartment ensures lower energy costs and a smaller environmental footprint.

*Location on map is indicative.



Floor plans



Additional information

Features

Ceramic tiles

Laminate flooring

Modern design

Near amenities

Thermal insulation

Contact us



Katerina Athini

✉ katerina@cyprusdomus.com

