

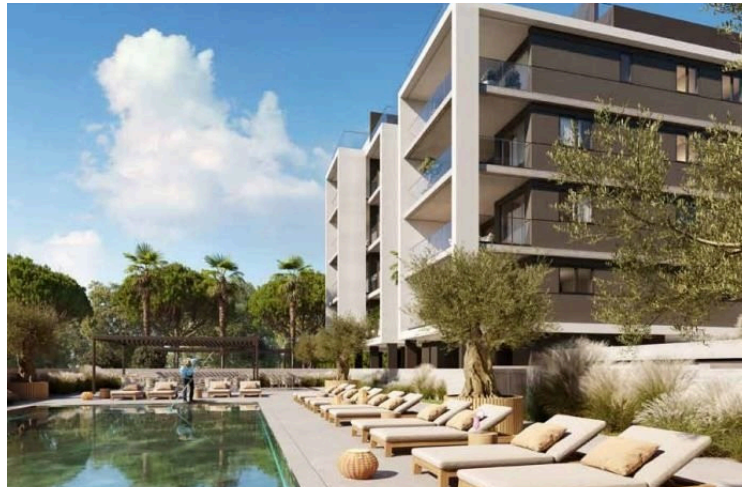
#9820

New Luxury Design Studio In Germasogeia Area

📍 Germasogeia Tourist Area, Limassol

€980,000 +VAT





Overview

Specifications

Bedrooms

 3

Bathrooms

 2

Covered

 117.1 m²

Type **Apartment**

Toilets **1**

Covered veranda **25.4 m²**

Status **Under construction**

Energy efficiency rating  **A**

Description

Meticulously designed with smart space arrangements that deliver pure comfort and style.

Residents will enjoy the opulence of spacious living areas with floor to ceiling windows that allow natural light to flow through the space giving it that sense of freedom.

These homes are designed with the best high quality and high standards of finish, where premium aesthetics fuse with elevated comforted high spec functionality.

*Location on the map is indicative.



Floor plans



Additional information

Facilities

Aircondition, Central system

Gym

Heating, Underfloor

Parking, Covered

Pool, Communal


Features

High ceilings

Contact us



Vassilis Papadopoulos

 (+357) 99662023

 info@cyprusdomus.com

