

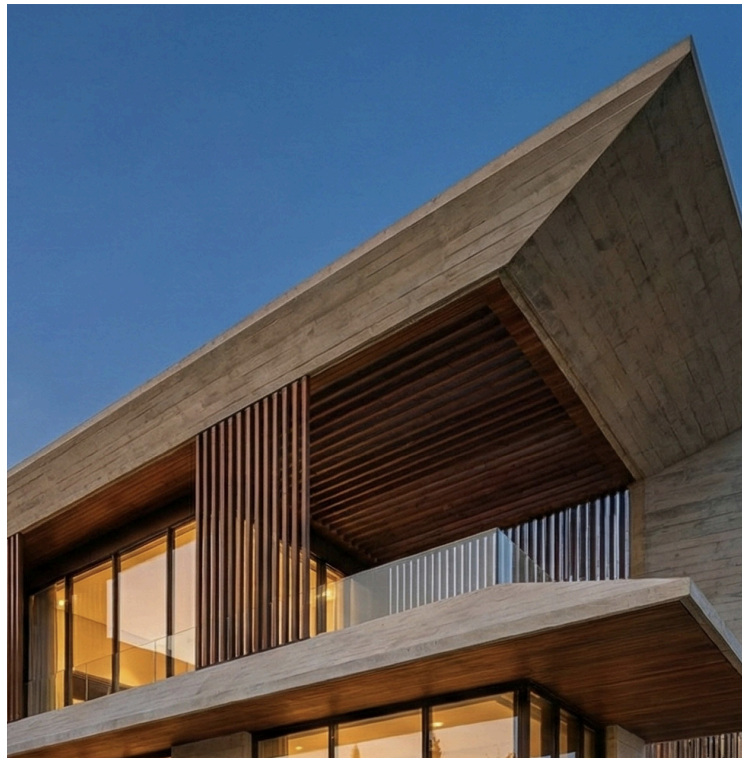
#9839

New Luxury Villa In Parekkklisia Tourist Area

📍 Parekkklisia Tourist Area, Limassol

€26,670,000 +VAT





Overview

Specifications

Bedrooms



Bathrooms



Covered



Type	House
Toilets	2
Plot	1233 m²
Covered veranda	269 m²

Uncovered veranda	174 m²
Status	Off plan
Energy efficiency rating	A+

Description

A luxurious house located in the sought-after Parekklesia Tourist Area, offering the perfect blend of comfort and modern living. This spacious home boasts an impressive internal space of 770 m² with five generously sized bedrooms, six bathrooms, and 2 guest w/c, providing plenty of room for family and guests.

Designed for functional elegance, the residence includes a basement, ideal for extra storage space, a home gym, or entertainment needs. Every detail has been thought out—from the large plot that ensures privacy, to the centrally installed air conditioning system and underfloor heating for year-round comfort. The property is built to the highest standards, achieving an excellent A+ energy efficiency rating, which reduces utility costs and minimizes environmental impact.

Enjoy your own private swimming pool, perfect for relaxing or entertaining guests.

The Parekklesia Tourist Area is renowned for its scenic surroundings, proximity to golden beaches, vibrant dining options, and easy access to main roads and local amenities.

*Location on map is indicative.



Floor plans



Additional information

Facilities

Aircondition, Central system

Heating, Underfloor

Parking, Underground

Pool, Private

Features

Double glazing

Floor-to-ceiling windows

Thermal insulation

Contact us



Katerina Athini

✉ katerina@cyprusdomus.com

