

#9884

# New Apartment For Sale In Episkopi Area

📍 Episkopi Lemesou, Limassol

€210,000 +VAT



# Overview

## Specifications

Bedrooms



1

Bathrooms



1

Covered

**61.5 m<sup>2</sup>**

Type

**Apartment**

Status

**Off plan**

Covered veranda

**6 m<sup>2</sup>**

## Description

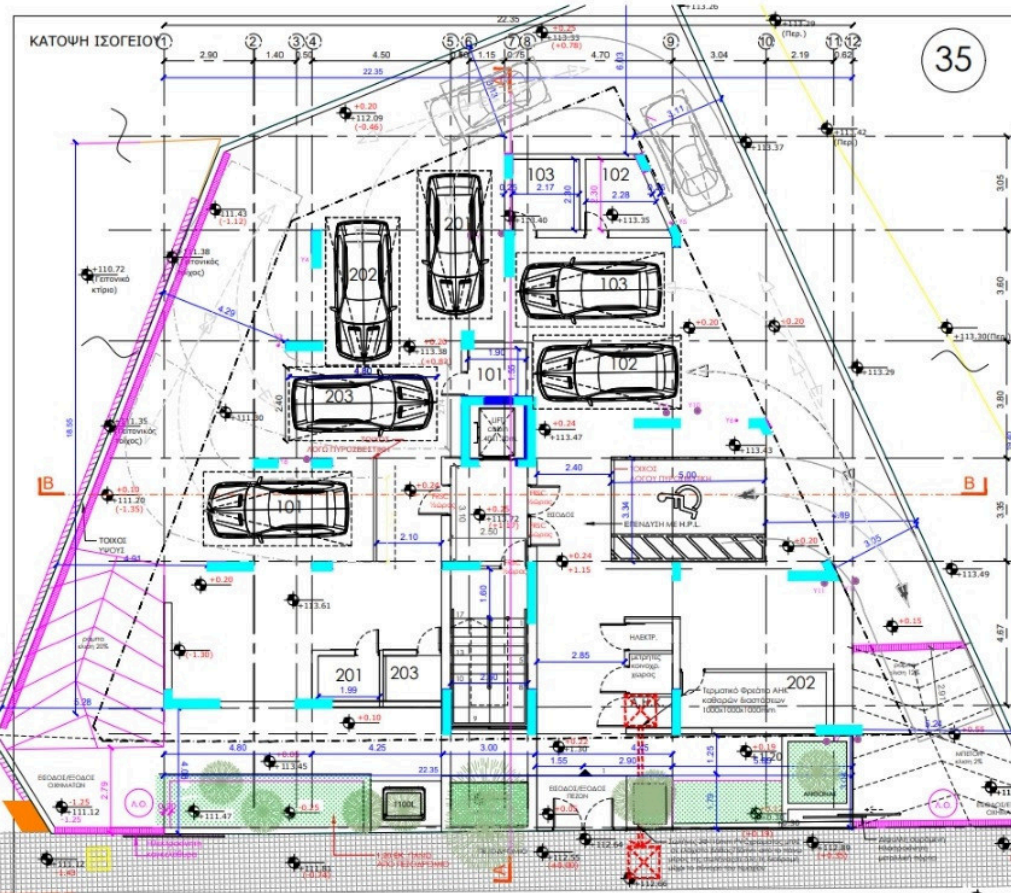
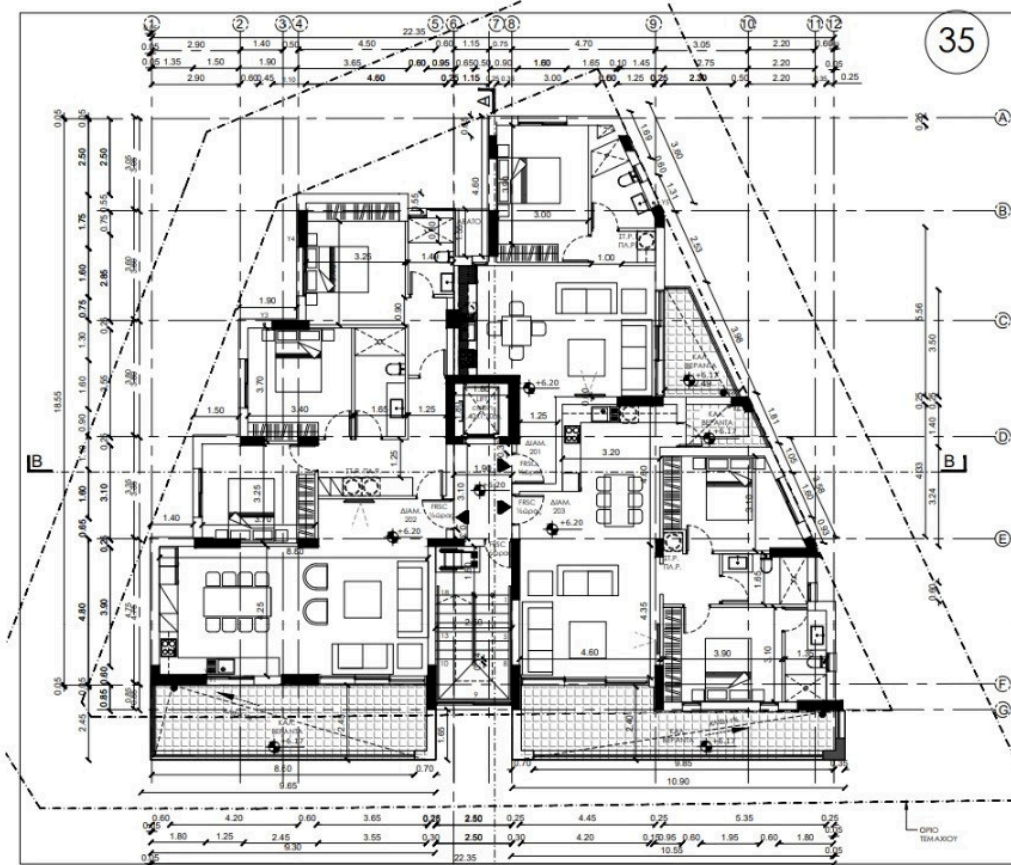
Modern apartment with a total internal space of 61.50 square meters. This thoughtfully designed property features one comfortable bedroom and one contemporary bathroom, making it an ideal choice for individuals or couples seeking a stylish and efficient living space.

Episkopi Lemesou is a peaceful community that offers an authentic lifestyle with local shops, supermarkets, and cafes within a short distance. The surroundings provide a sense of tranquility while still being close to all amenities, making it a popular location for those who appreciate a relaxed pace of life and easy connections to nearby urban centers.

\*Location on map is indicative.



# Floor plans



# Additional information

## Facilities

Parking, Covered

Storage

## Features

Open plan

## Contact us



**Katerina Athini**

✉ [katerina@cyprusdomus.com](mailto:katerina@cyprusdomus.com)

