

#9887

New Apartment For Sale In Episkopi Area

📍 Episkopi Lemesou, Limassol

€284,000 +VAT



Overview

Specifications

Bedrooms

 2

Bathrooms

 2

Covered

 86.5 m²

Type

Apartment

Status

Off plan

Covered veranda

20.5 m²

Description

This thoughtfully designed residence with a total internal space of 86.50 m², features two spacious bedrooms and two well-appointed bathrooms.

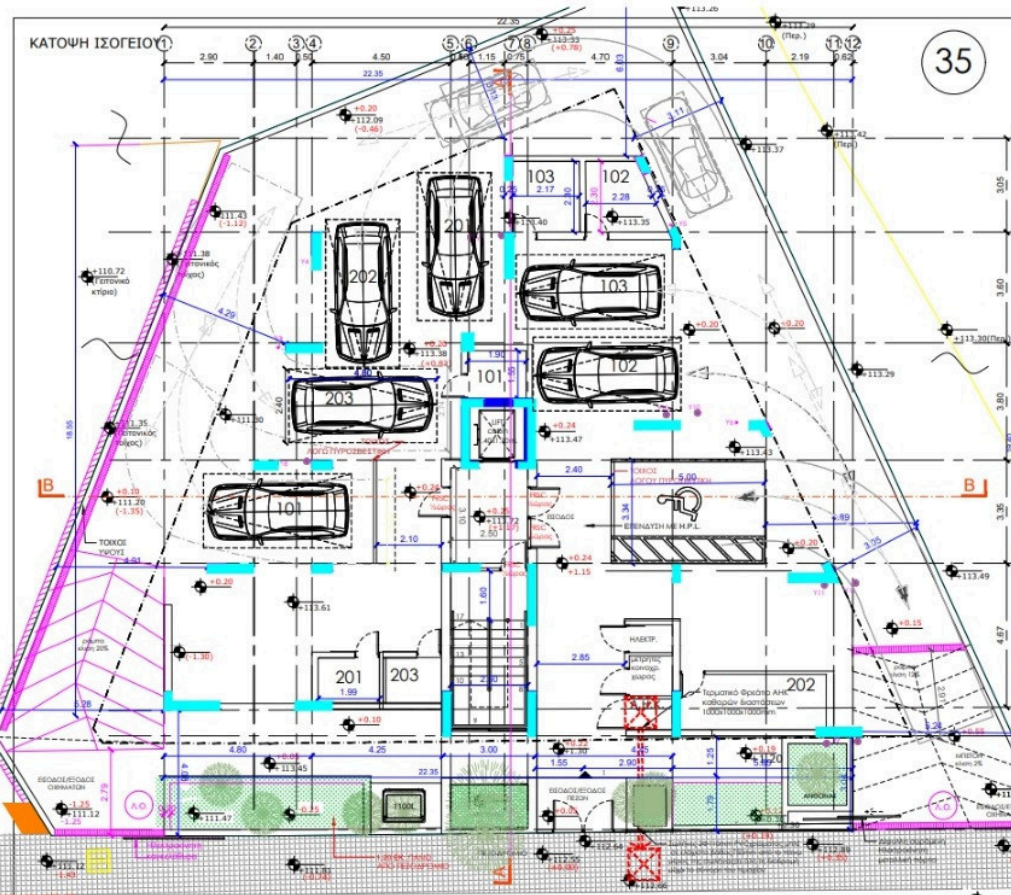
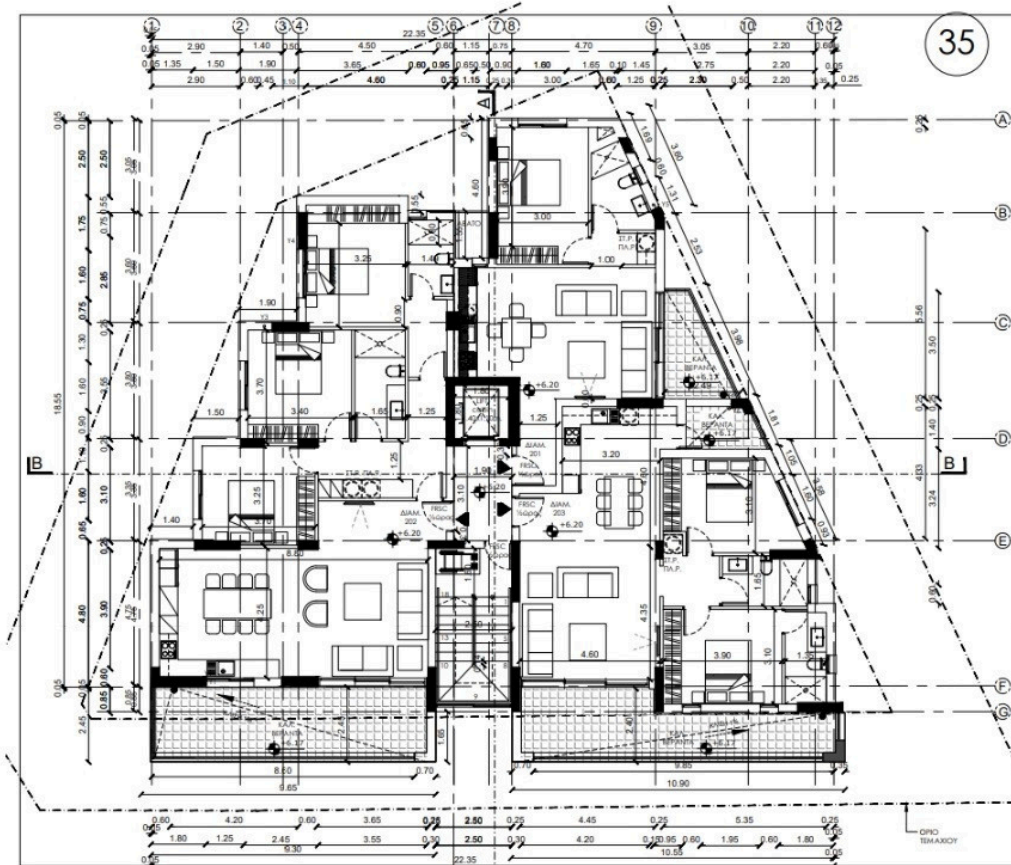
The open-plan layout creates an airy atmosphere, combining the living, dining, and kitchen areas for easy living and entertaining.

Episkopi Lemesou is a peaceful community that offers an authentic lifestyle with local shops, supermarkets, and cafes within a short distance. The surroundings provide a sense of tranquility while still being close to all amenities, making it a popular location for those who appreciate a relaxed pace of life and easy connections to nearby urban centers.

*Location on map is indicative.



Floor plans



Additional information

Facilities

Parking, Covered

Storage

Features

En suite bathroom

Open plan

Contact us



Katerina Athini

✉ katerina@cyprusdomus.com

