

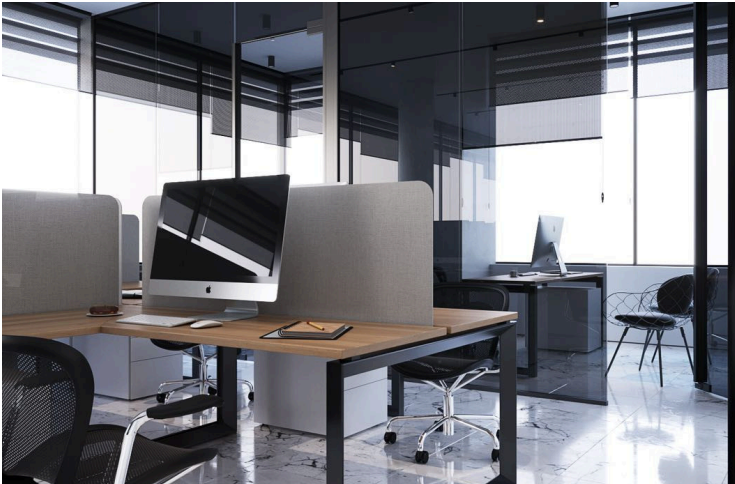
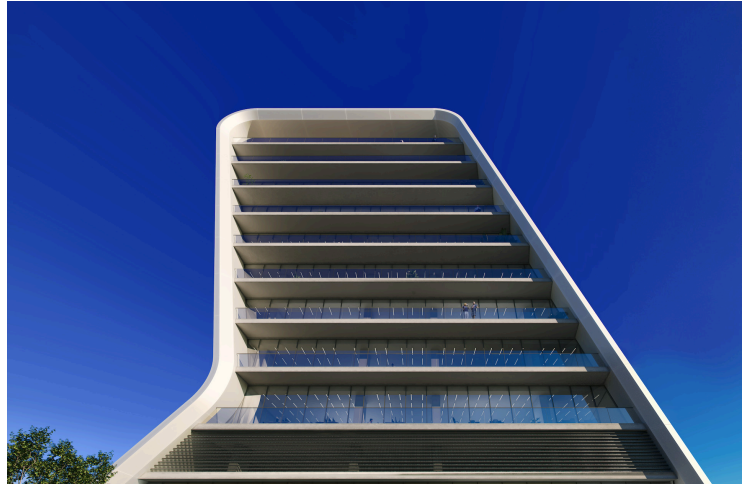
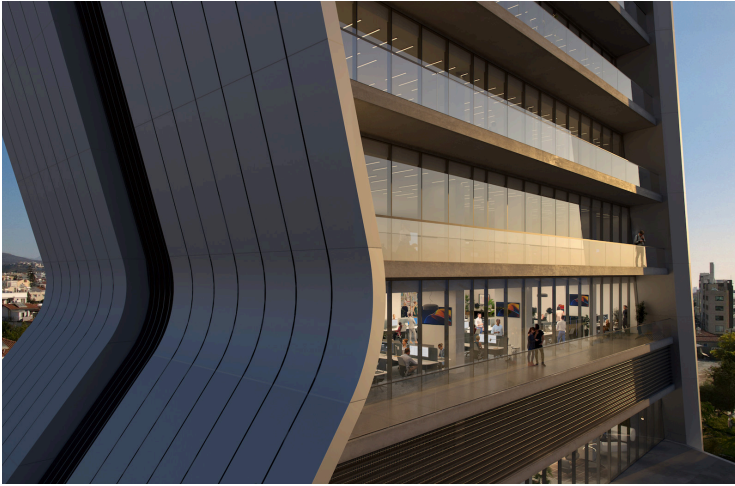
#9903

New Luxury Ground Floor Office In Kapsalos Area

📍 Kapsalos, Limassol

€5,658,951 +VAT





Overview

Specifications

Covered

 **436.2 m²**

Type **Office**

Toilets **5**

Mezzanine **268 m²**

Status **Under construction**

Description

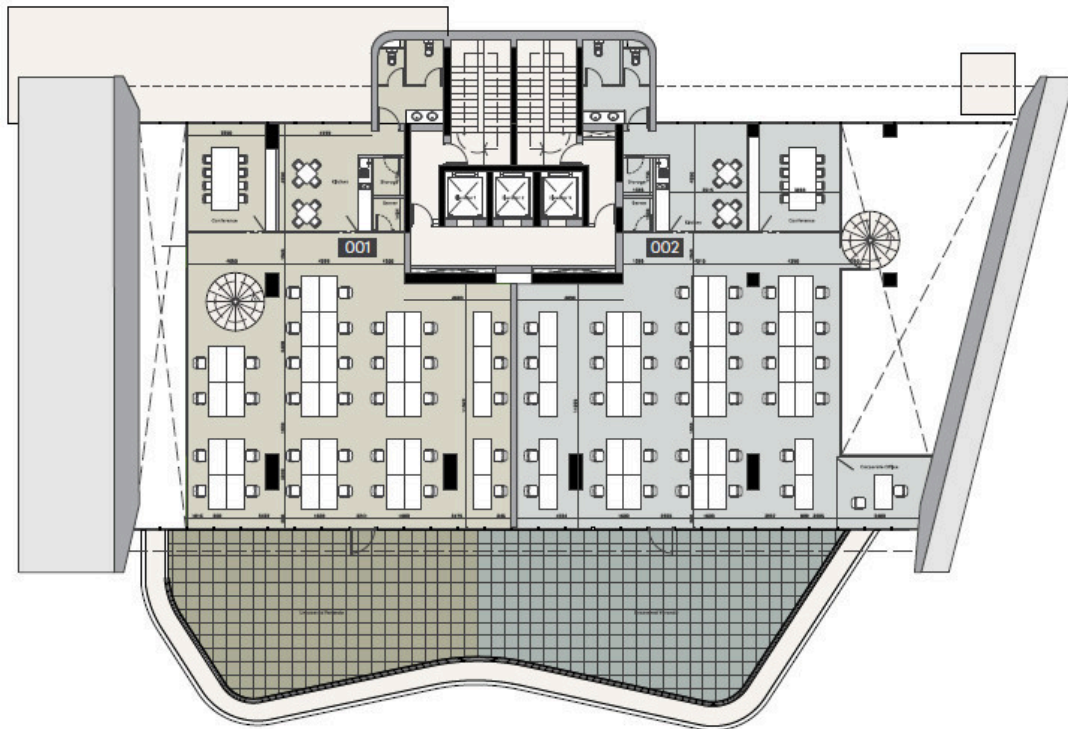
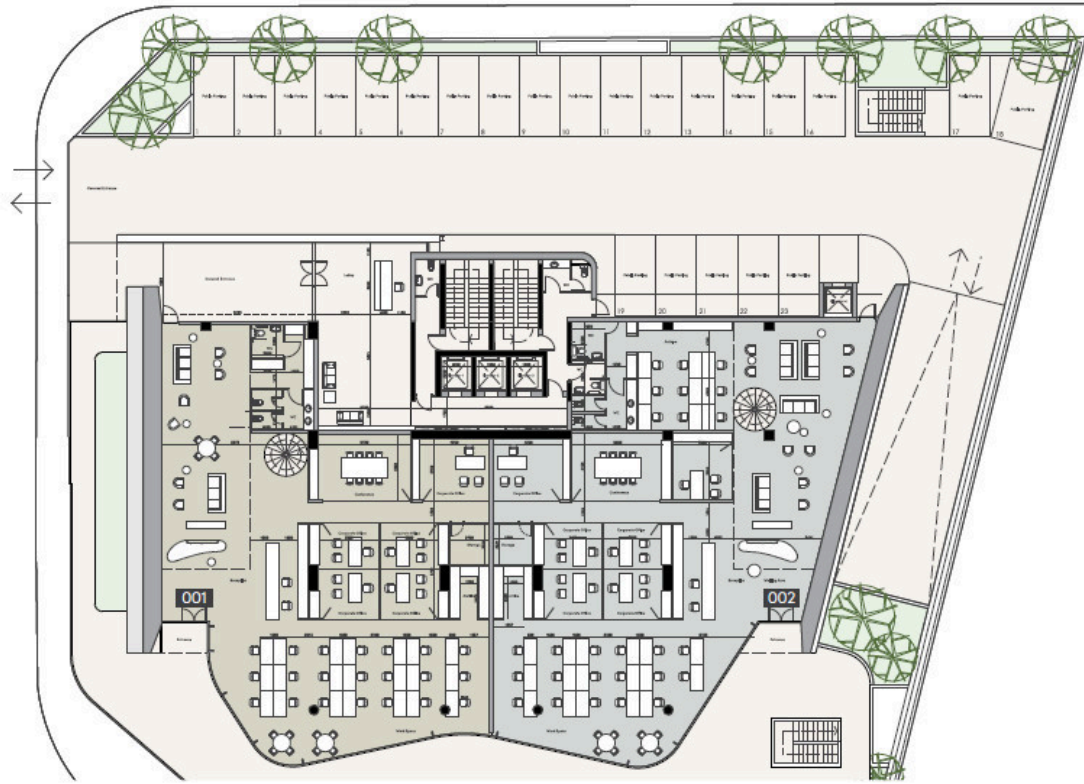
This striking architectural landmark features 18 premium offices spread across 8 floors. Its unique, curved design stands out, blending modern style with functionality. The top floor has a gourmet restaurant with sweeping views, and a top-tier gym is available just above the mezzanine.

Built with the finest materials, combines business with luxury, offering a valuable addition to any portfolio and a great investment opportunity.

*Location on map is indicative.



Floor plans



Additional information

Facilities

Aircondition, Provision

Gym

Parking, Underground

Features

Conference hall

Double glazing

Floor-to-ceiling windows

Lobby

Restaurant

Roof garden

Thermal insulation

Contact us



Katerina Athini

✉ katerina@cyprusdomus.com

