

#9950

New Apartment For Sale In Erimi Area

📍 Erimi, Limassol

€170,000 +VAT





Overview

Specifications

Bedrooms



Bathrooms



Covered

 **50 m²**

Type

Apartment

Status

Off plan

Covered veranda

5 m²

Description

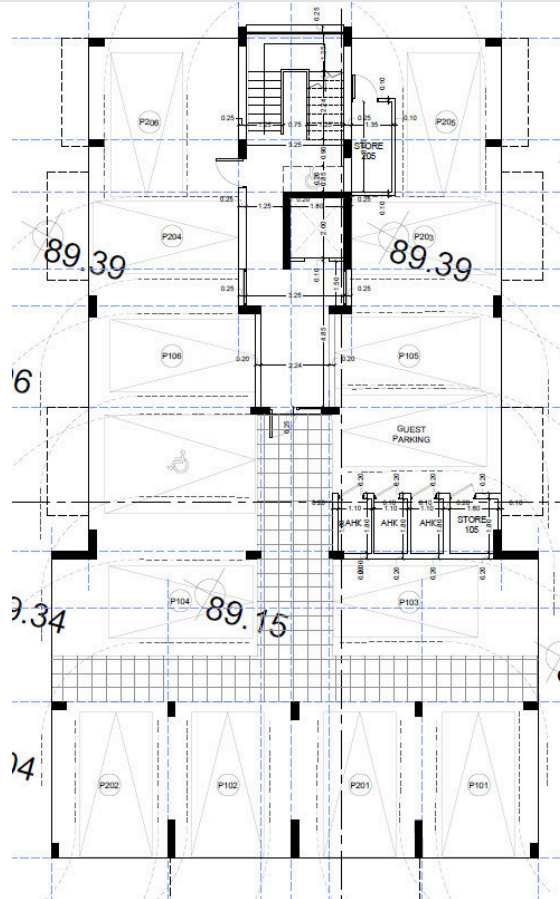
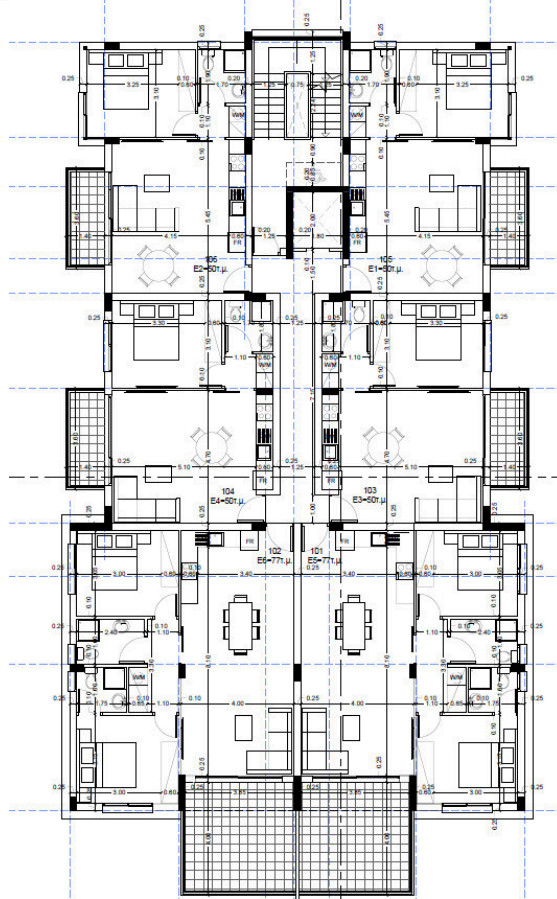
With an internal space of 50 square meters, this modern apartment offers a comfortable living area, a bright bedroom, and a well-designed bathroom. The layout makes excellent use of space, perfect for singles or couples looking for a contemporary home.

Erimi is known for its tranquil surroundings and friendly community, blending traditional charm with convenient access to essential amenities. This area is perfect for those seeking a relaxed pace of life while remaining close to shops, cafes, schools, and transport links.

*Location on map is indicative.



Floor plans



Additional information

Facilities

Parking, Covered

Storage

Contact us



Katerina Athini

✉ katerina@cyprusdomus.com

