

#9977

New Office For Sale In Petrou & Pavlou Area

📍 Petrou Kai Pavlou, Limassol

€1,200,000 +VAT





Overview

Specifications

Covered

 **195 m²**

Type	Office
Toilets	2
Covered veranda	15 m²

Status	Off plan
Energy efficiency rating	 A

Description

With an expansive internal area of 195 square meters, this office offers a flexible space perfect for a growing business or an established company looking to upgrade its workplace. The office is designed to maximize both comfort and efficiency, featuring large windows for natural light and an open layout that can be tailored to suit your needs.

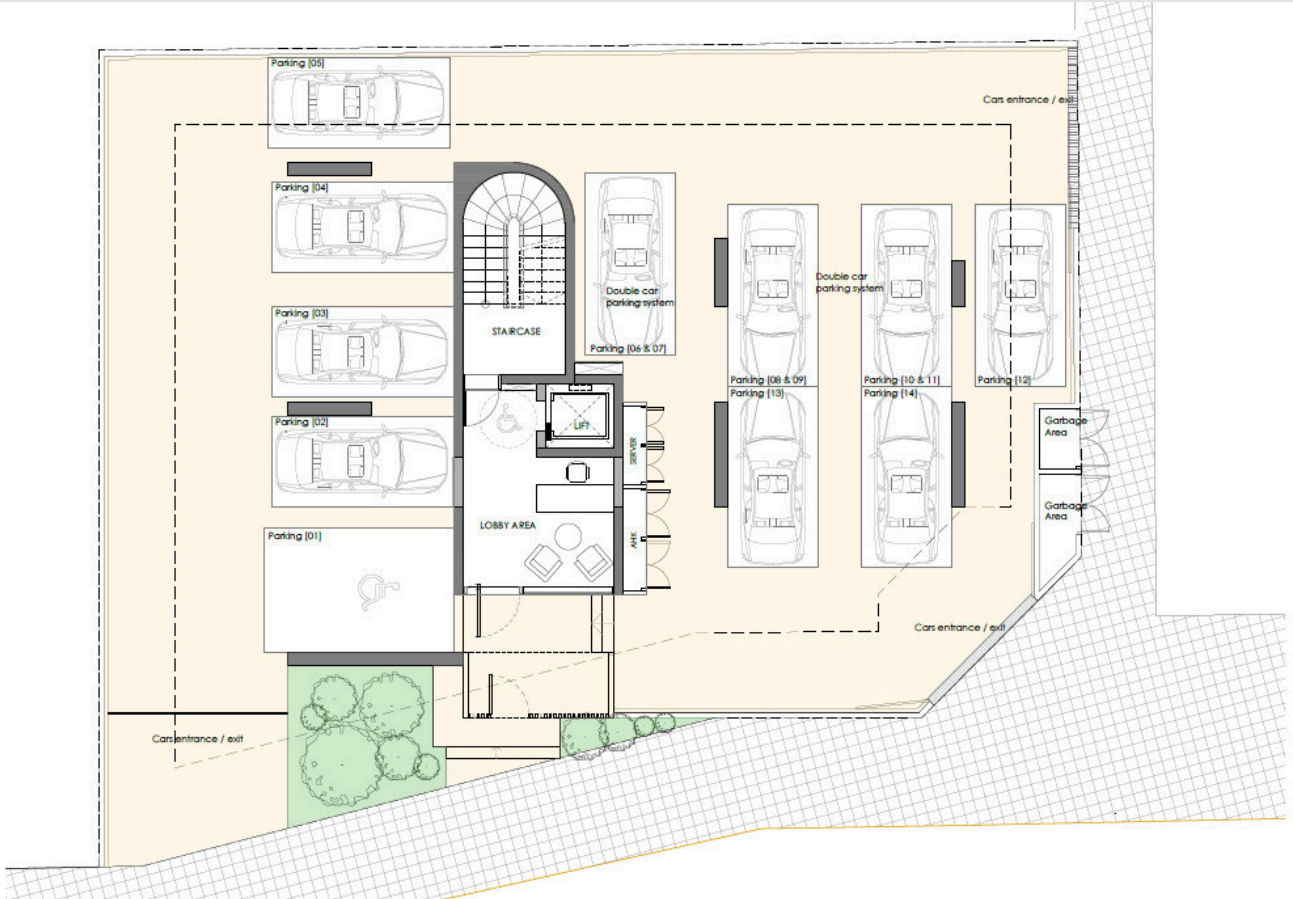
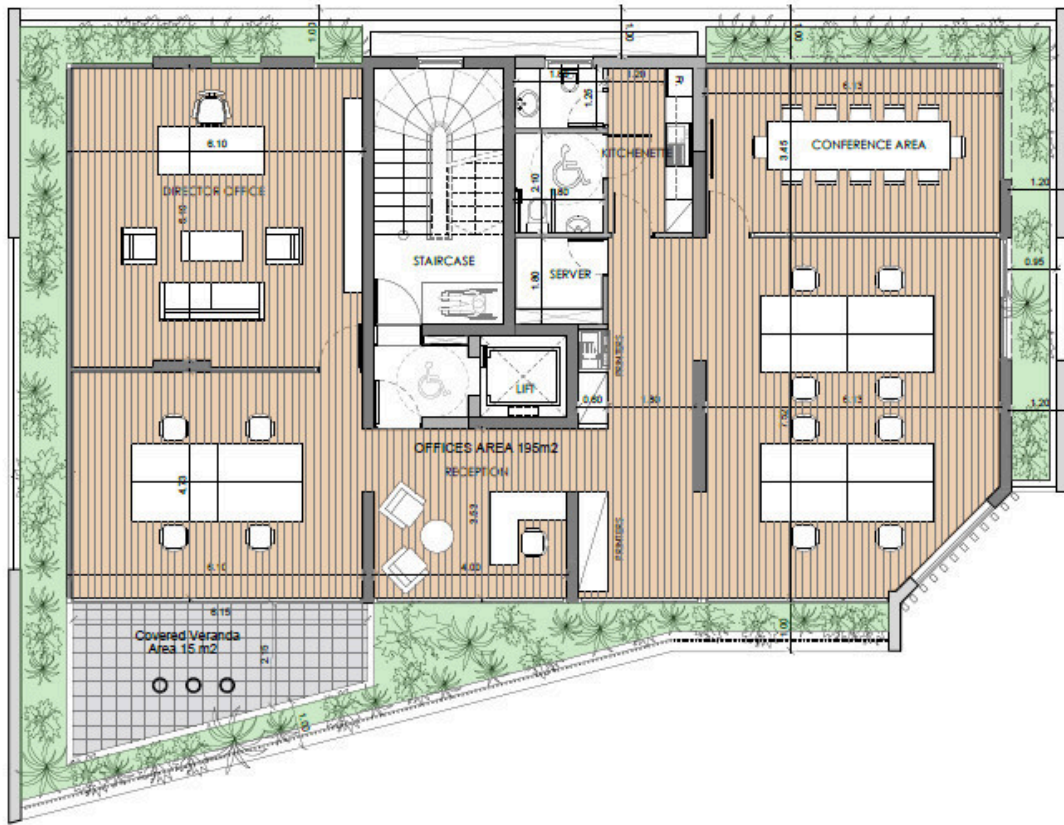
Petrou Kai Pavlou is a vibrant and well-established area known for its excellent connectivity and professional atmosphere. The neighborhood offers a mix of residential and commercial developments, creating a thriving community favored by business owners and professionals. Local amenities such as banks, restaurants, cafes, and shops are just a short walk away, ensuring convenience for your team and clients. The area is well-served by public transport and offers easy access to main roads.

This office comes with an A-rated energy efficiency certificate, guaranteeing low operating costs and a comfortable working environment all year round.

*Location on map is indicative.



Floor plans



Additional information

Facilities

Aircondition, Provision

Parking, Covered

Features

Double glazing

Kitchenette

Near amenities

Raised floors

Roof garden

Structured cabling/wiring

Thermal insulation

Contact us



Katerina Athini

✉ katerina@cyprusdomus.com

