

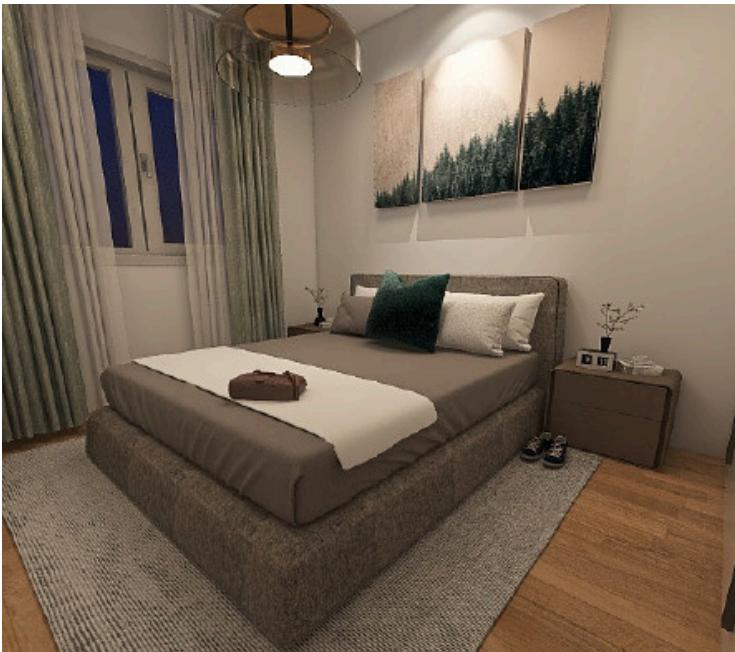
#9982

New Whole Floor Penthouse In Agia Fyla Area

📍 Agia Fyla, Limassol

€290,000 +VAT





Overview

Specifications

Bedrooms

 2

Bathrooms

 1

Covered

 80 m²

Type	Apartment
Toilets	1
Covered veranda	18 m²

Uncovered veranda	7 m²
Status	Off plan

Description

This thoughtfully designed property offers 80 square meters of internal space, featuring two spacious bedrooms and a stylish bathroom.

The open-plan living and dining areas allow plenty of natural light, creating a warm and inviting atmosphere. High-quality finishes and contemporary touches are found throughout, with a focus on convenience and practicality.

The area offers a blend of urban convenience and natural beauty, with local shops, schools, and amenities close by. The neighborhood's elevated location provides lovely views and a refreshing sense of openness.

*Location on map is indicative.



Floor plans



Additional information

Facilities

Aircondition, Split system

Parking, Covered

Solar photovoltaic panels (provision)

Solar water heater

Features

Ceramic tiles

Laminate flooring

Modern design

Next to green area

Open plan

Thermal insulation

Contact us



Katerina Athini

✉ katerina@cyprusdomus.com

